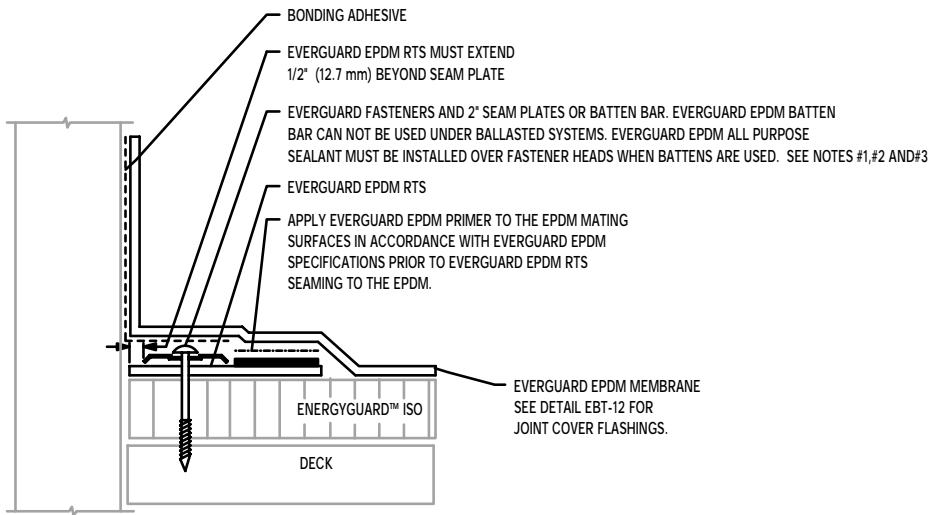
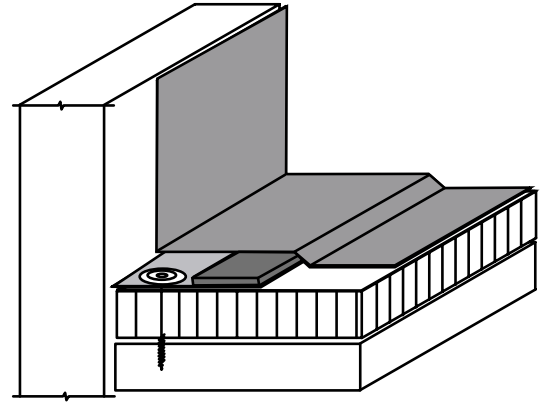
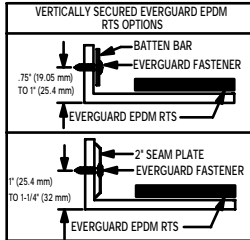


# EVERGUARD® EPDM TABLE OF CONTENTS SYSTEM DETAILS

| Details No.         | EverGuard EPDM  | Systems              |
|---------------------|---|----------------------|
| <b>Base Tie-Ins</b> |   |                      |
| EBT-1               | EverGuard EPDM RTS Strip Parapet/Curb Base Tie-In                     | All                  |
| EBT-2               | RTS Strip Parapet/Curb Base Tie-Ins                                   | All                  |
| EBT-3               | EverGuard EPDM RTS Strip At Structural Steel Support                  | All                  |
| EBT-4               | RTS Strip At Structural Steel Support                                 | All                  |
| EBT-5               | Plan View of RTS Strip  | All                  |
| EBT-6               | Batten Bar Base Tie-In  | All                  |
| EBT-7               | Horizontal Batten Bar Base Tie-In                                     | Adhered & M.A.S.     |
| EBT-8               | Curb/Parapet Flashing Using EverGuard EPDM Batten Cover               | Adhered & Reinforced |
| EBT-9               | Curb/Wall Flashing Using EverGuard Seam Plates                        | Adhered & Reinforced |
| EBT-10              | Curb/Parapet Base Tie-In  | All                  |
| EBT-11              | Curb/Parapet Base Tie-In With Existing Can                            | Adhered & Reinforced |
| EBT-12              | EverGuard EPDM Joint Cover Over Lap Joint                             | All                  |
| EBT-13              | EverGuard EPDM Joint Cover Over Lap Joint                             | All                  |
| EBT-14              | Welded Watertight Curb Flashing Using EverGuard EPDM Flashing Tape    | All                  |
| EBT-15              | Welded Watertight Curb Flashing Using EverGuard EPDM Flashing Tape    | All                  |
| EBT-16              | Welded Watertight Curb Flashing Using EverGuard EPDM Uncured Flashing | All                  |
| EBT-17              | Welded Watertight Curb Flashing Using EverGuard EPDM Uncured Flashing | All                  |
| EBT-18              | Built-Up Roofing Tie-In With Tapered Edge                             | All                  |
| EBT-19              | Built-Up Roofing Tie-In   | All                  |
| EBT-20              | EPDM to EPDM Roof Tie-In  | All                  |
| EBT-21              | EPDM to Thermoplastic Roof Tie-In                                     | All                  |
| EBT-22              | Tie-In To Built-Up Roof   | All                  |
| EBT-23              | Modified Bitumen Tie-In To Built-Up                                   | All                  |



NOTES:

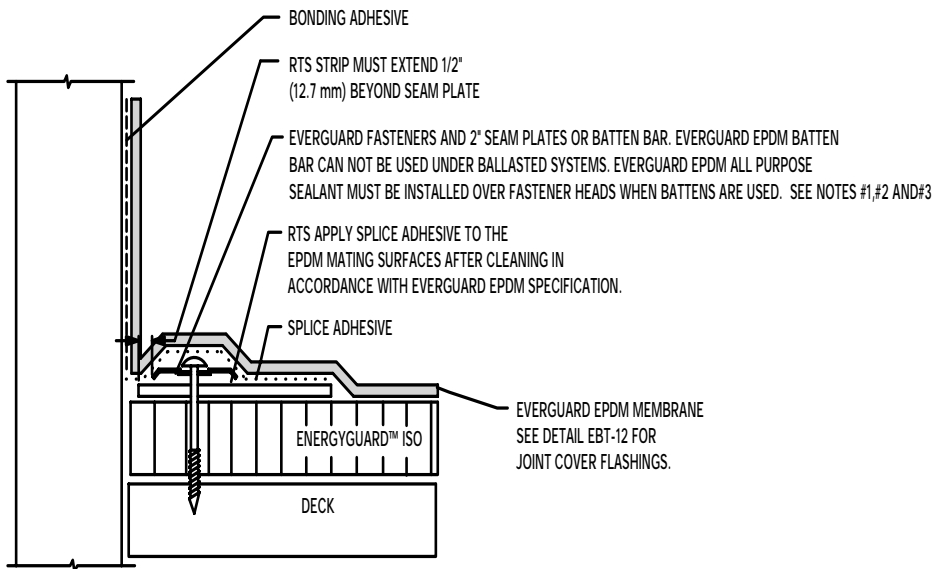
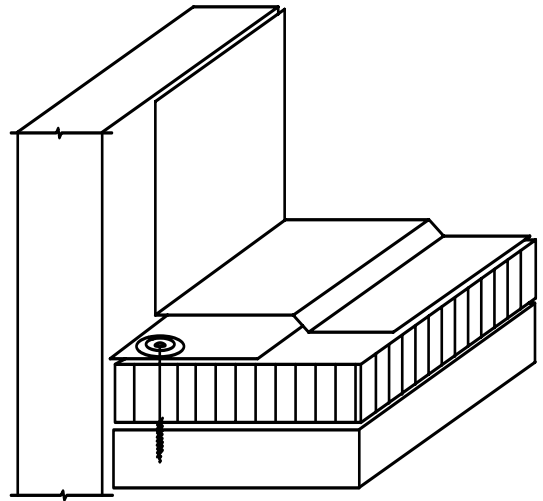
1. MAXIMUM 6" (152.4 mm) LONG FASTENERS. (NOTE: WOOD BLOCKING MAY BE SUBSTITUTED FOR INSULATION TO REDUCE FASTENER LENGTH REQUIREMENT).
2. FASTENER SPACING FOR BASE TIE IN MUST BE 12" (304.8 mm) O.C. MAX.
3. IN CASE OF OBSTRUCTION REFER TO DETAIL EBT-3 OR EBT-4.

SYSTEMS: ALL  
FOR USE IN GUARANTEED SYSTEMS: Up to 20 Years

EVERGUARD® EPDM  
Tape RTS Parapet/Curb Base Tie-In

September 2002  
Interim Updates at [www.gaf.com](http://www.gaf.com)

**EBT-1**

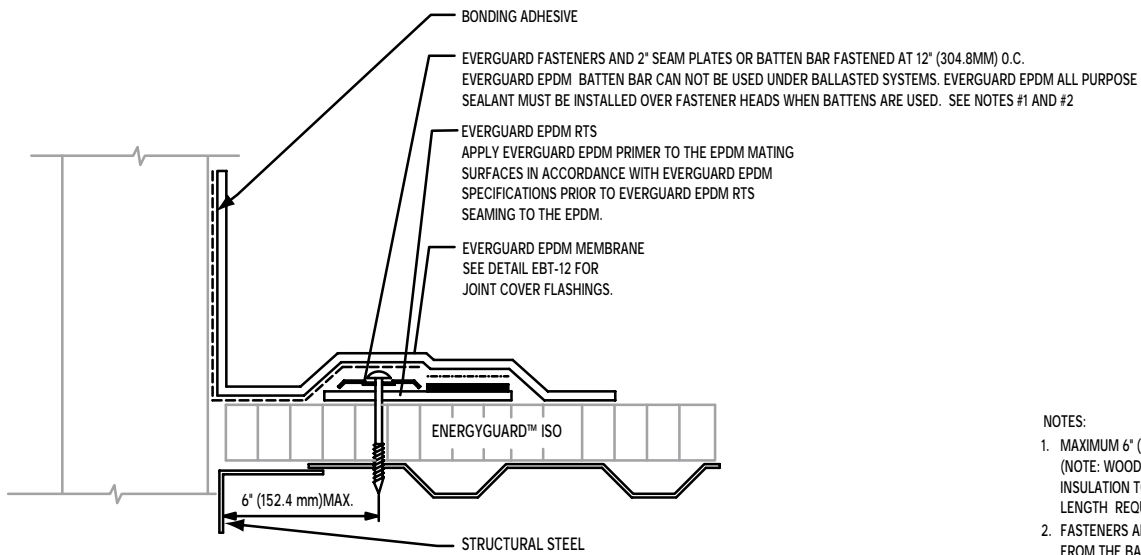
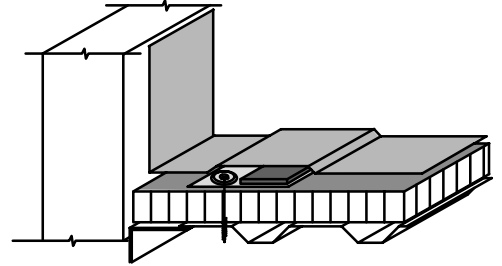


NOTES:

1. MAXIMUM 6" (152.4 mm) LONG FASTENERS. (NOTE: WOOD BLOCKING MAY BE SUBSTITUTED FOR INSULATION TO REDUCE FASTENER LENGTH REQUIREMENT).
2. FASTENER SPACING FOR BASE TIE IN MUST BE 12" (304.8 mm) O.C. MAX.
3. IN CASE OF OBSTRUCTION REFER TO DETAIL EBT-3 OR EBT-4.

SYSTEMS: ALL  
FOR USE IN GUARANTEED SYSTEMS: Up to 20 Years

## EBT-2



NOTES:

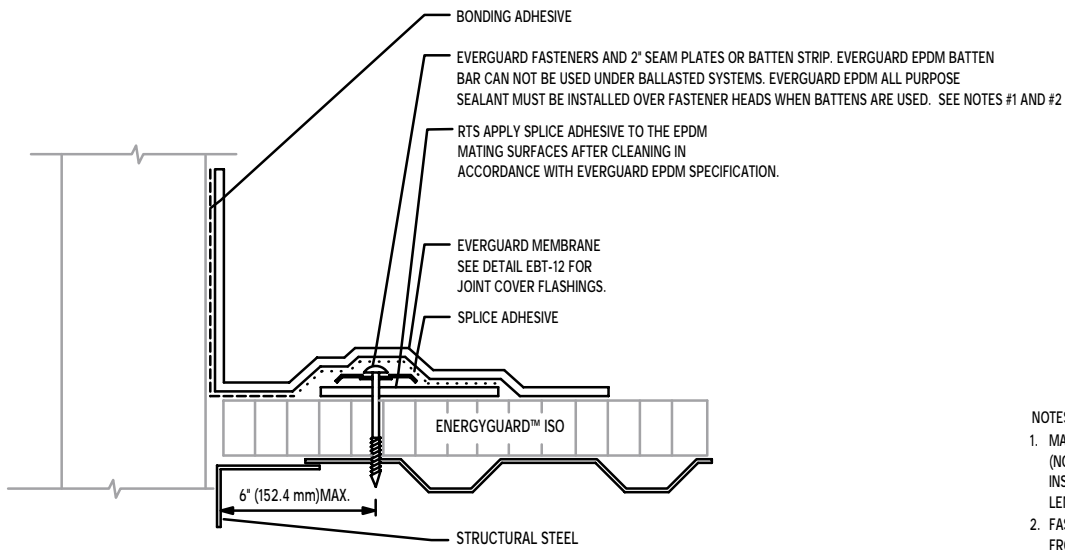
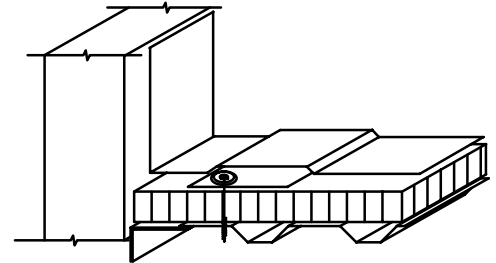
1. MAXIMUM 6" (152.4 mm) LONG FASTENERS.  
(NOTE: WOOD BLOCK MAY BE SUBSTITUTED FOR INSULATION TO REDUCE MAXIMUM FASTENER LENGTH REQUIREMENT).
2. FASTENERS ARE TO BE LOCATED 1-1/2" (38 mm) FROM THE BACK OR EDGE OF THE RTS.

SYSTEMS: ALL  
FOR USE IN GUARANTEED SYSTEMS: Up to 20 Years

EVERGUARD® EPDM  
Tape RTS Strip at Structural Steel Support

September 2002  
Interim Updates at [www.gaf.com](http://www.gaf.com)

**EBT-3**

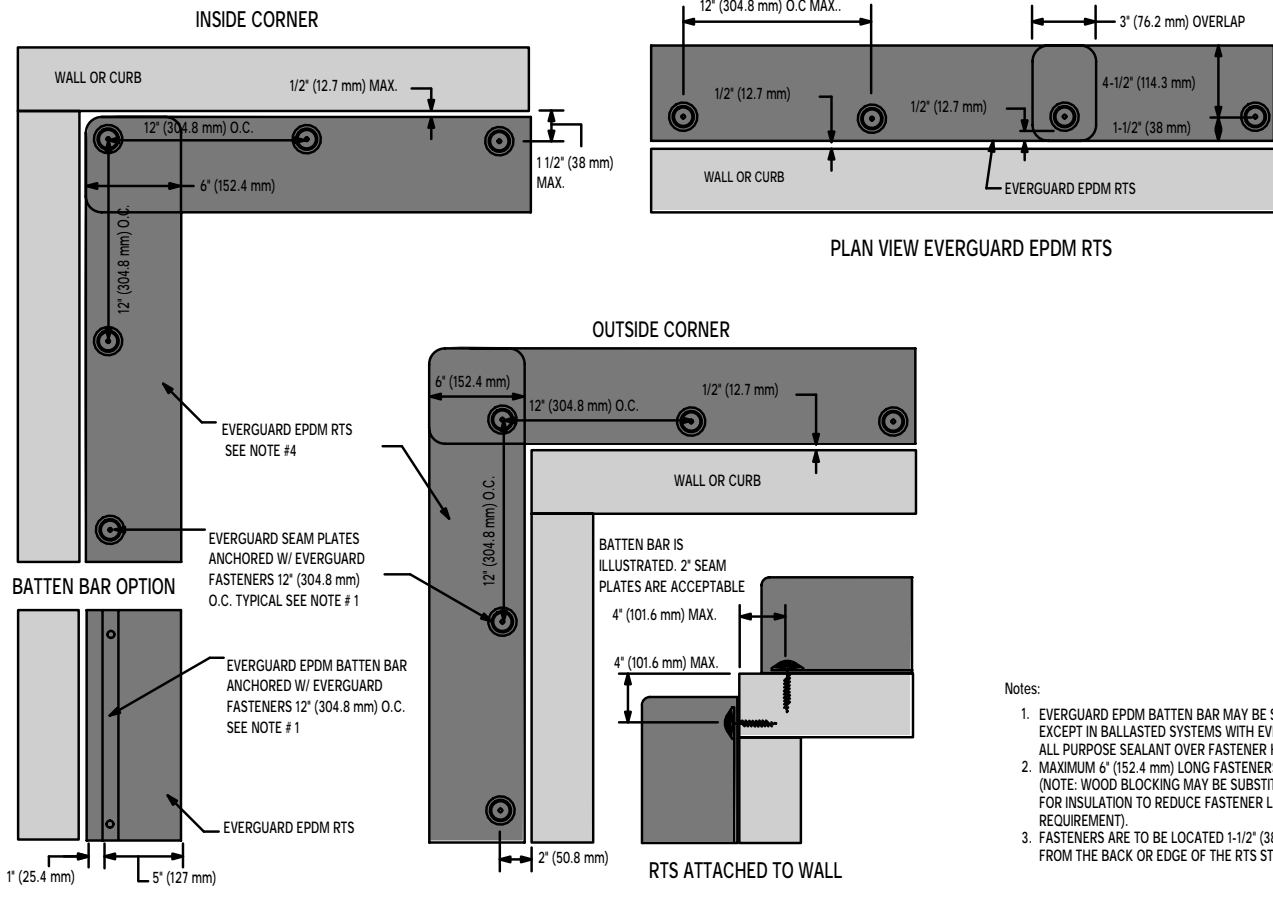


NOTES:

1. MAXIMUM 6" (152.4 mm) LONG FASTENERS.  
(NOTE: WOOD BLOCK MAY BE SUBSTITUTED FOR INSULATION TO REDUCE MAXIMUM FASTENER LENGTH REQUIREMENT).
2. FASTENERS ARE TO BE LOCATED 1-1/2" (38 mm) FROM THE BACK OR EDGE OF THE RTS.

SYSTEMS: ALL  
FOR USE IN GUARANTEED SYSTEMS: Up to 20 Years

## EBT-4



- Notes:
1. EVERGUARD EPDM BATTEN BAR MAY BE SUBSTITUTED EXCEPT IN BALLASTED SYSTEMS WITH EVERGUARD EPDM ALL PURPOSE SEALANT OVER FASTENER HEADS.
  2. MAXIMUM 6" (152.4 mm) LONG FASTENERS. (NOTE: WOOD BLOCKING MAY BE SUBSTITUTED FOR INSULATION TO REDUCE FASTENER LENGTH REQUIREMENT).
  3. FASTENERS ARE TO BE LOCATED 1-1/2" (38 mm) FROM THE BACK OR EDGE OF THE RTS STRIP.

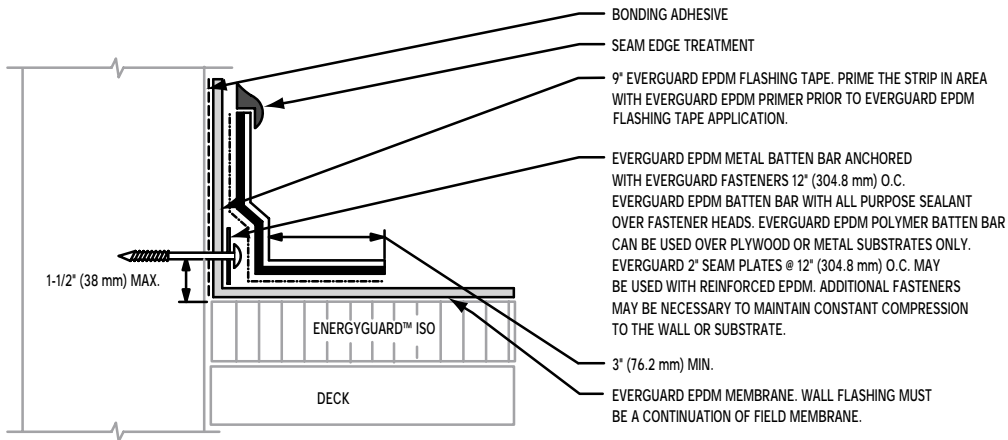
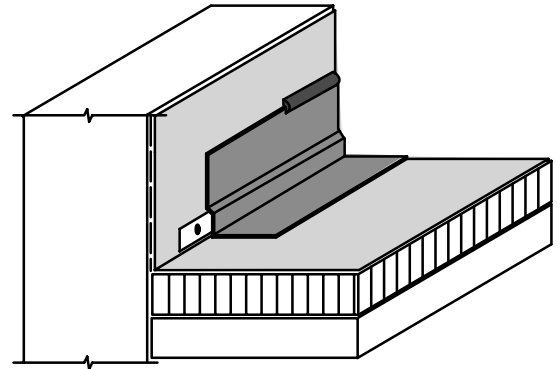
\*TAPE PORTION OF EVERGUARD EPDM RTS NOT SHOWN FOR CLARITY.

SYSTEMS: ALL  
FOR USE IN GUARANTEED SYSTEMS: Up to 20 Years

EVERGUARD®  
Plan View of RTS

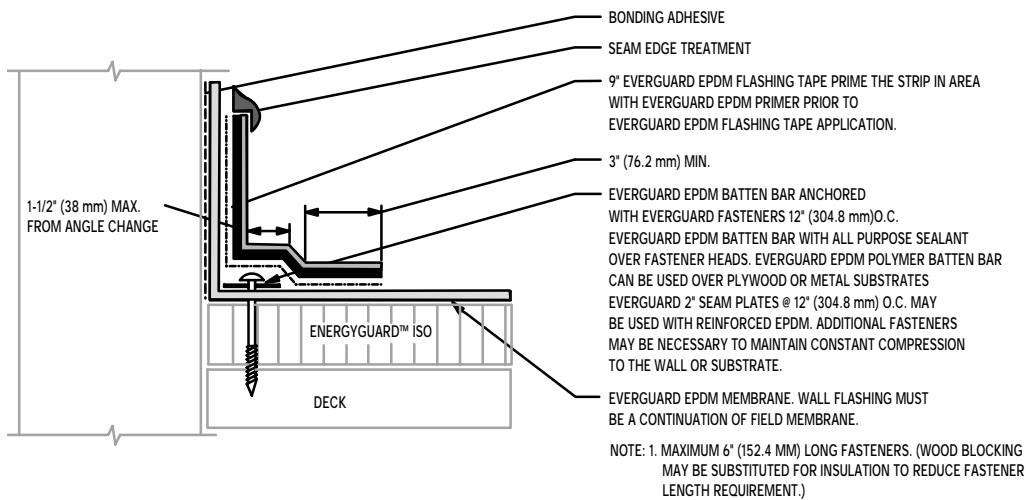
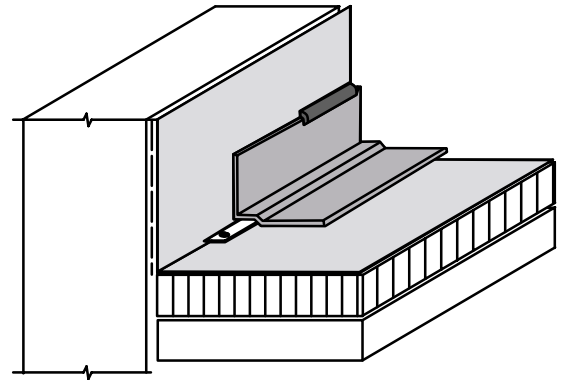
September 2002  
Interim Updates at [www.gaf.com](http://www.gaf.com)

**EBT-5**



SYSTEMS: ALL  
 FOR USE IN GUARANTEED SYSTEMS: Up to 15 Years

## EBT-6



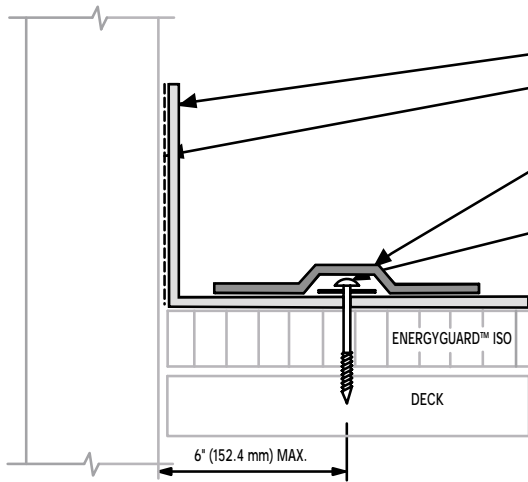
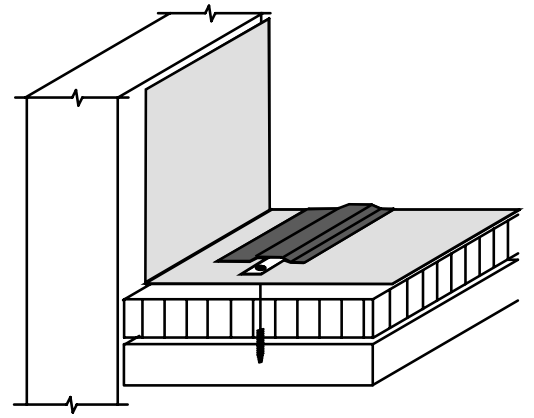
SYSTEMS: Adhered, Mechanically Attached  
 FOR USE IN GUARANTEED SYSTEMS: Up to 15 Years

EVERGUARD® EPDM  
 Horizontal Batten Strip Base Tie-In

September 2002  
 Interim Updates at [www.gaf.com](http://www.gaf.com)

**EBT-7**



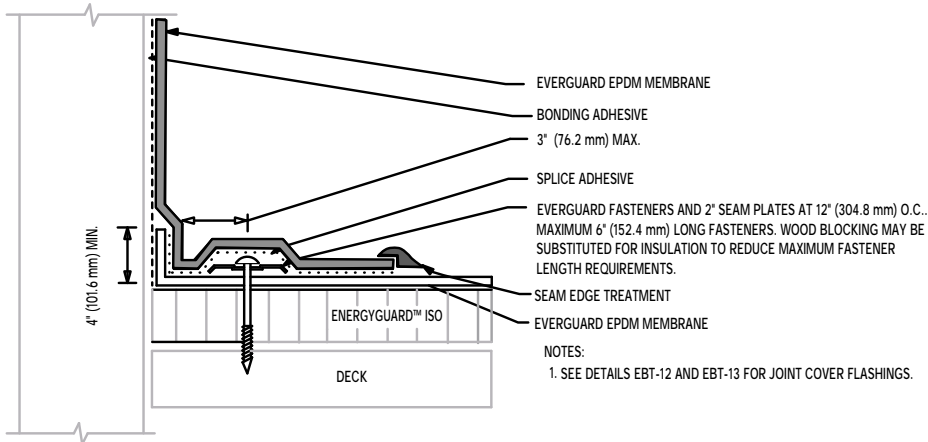
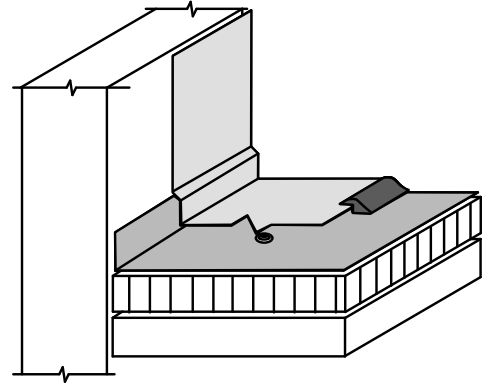


- EVERGUARD EPDM MEMBRANE
- WALL FLASHING MUST BE A CONTINUATION OF FIELD MEMBRANE ADHERED WITH BONDING ADHESIVE.
- EVERGUARD EPDM BATTEN COVER, 20" (6M) MAX. LENGTHS ALLOWING 4" (101.6 mm) SPACE BETWEEN SECTIONS FOR DRAINAGE
- EVERGUARD FASTENERS AND EVERGUARD EPDM BATTENS AT 12" (304.8 mm) O.C., MAXIMUM 6" (152.4 mm) LONG FASTENERS. WOOD BLOCKING MAY BE SUBSTITUTED FOR INSULATION TO REDUCE MAXIMUM FASTENER LENGTH REQUIREMENTS.

- NOTES:
1. SEE DETAILS EBT-12 OR EBT-13 FOR JOINT COVER FLASHINGS.

SYSTEMS: Adhered, Reinforced  
 FOR USE IN GUARANTEED SYSTEMS: Up to 15 Years

## EBT-8



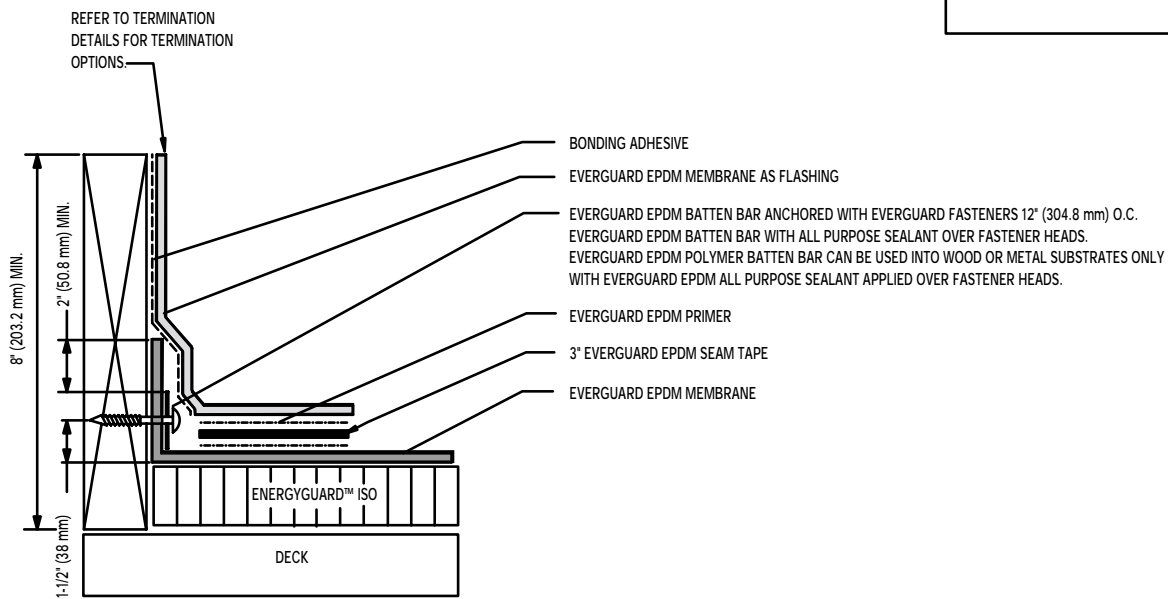
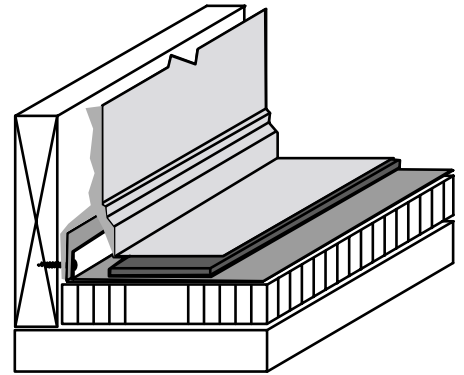
**CURB/WALL FLASHING  
USING EVERGUARD SEAM PLATES**

SYSTEMS: Adhered, Reinforced  
FOR USE IN GUARANTEED SYSTEMS: Up to 15 Years

EVERGUARD®  
Curb/Wall Flashing using EverGuard® Seam Plates

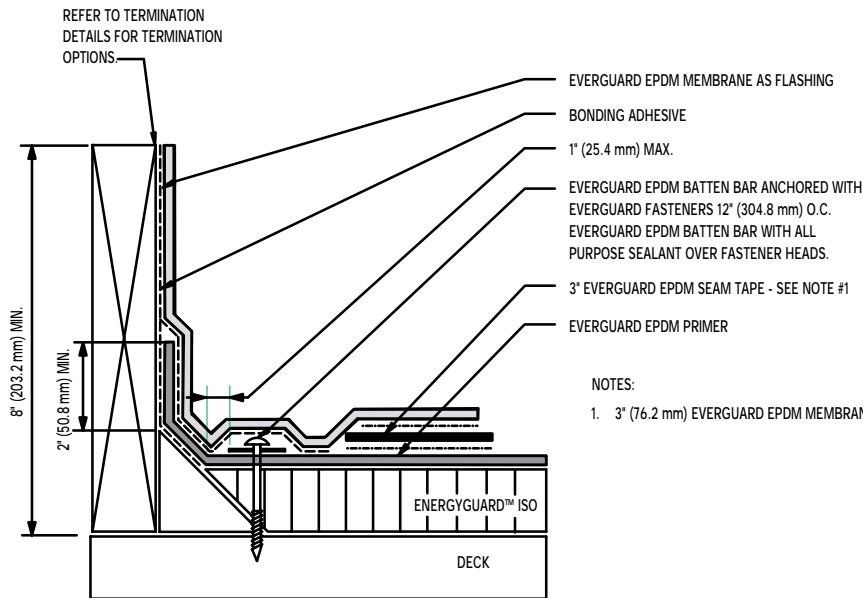
September 2002  
Interim Updates at [www.gaf.com](http://www.gaf.com)

**EBT-9**



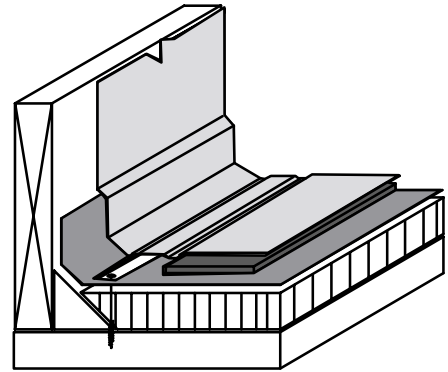
SYSTEMS: ALL  
FOR USE IN GUARANTEED SYSTEMS: Up to 15 Years

## EBT-10



NOTES:

1. 3" (76.2 mm) EVERGUARD EPDM MEMBRANE LAP SPLICE BEYOND BATTEN.

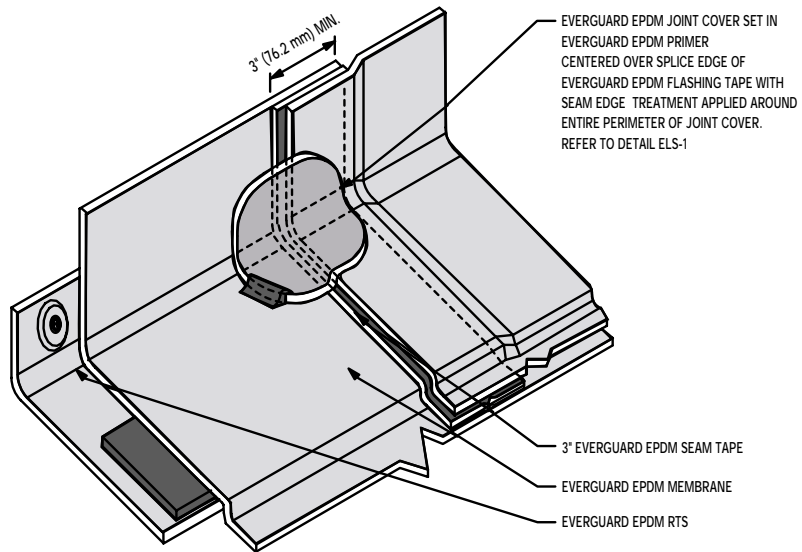


SYSTEMS: Adhered, Mechanically Attached  
FOR USE IN GUARANTEED SYSTEMS: Up to 15 Years

EVERGUARD® EPDM  
Curb/Parapet Base Tie-In with Existing Cant

September 2002  
Interim Updates at [www.gaf.com](http://www.gaf.com)

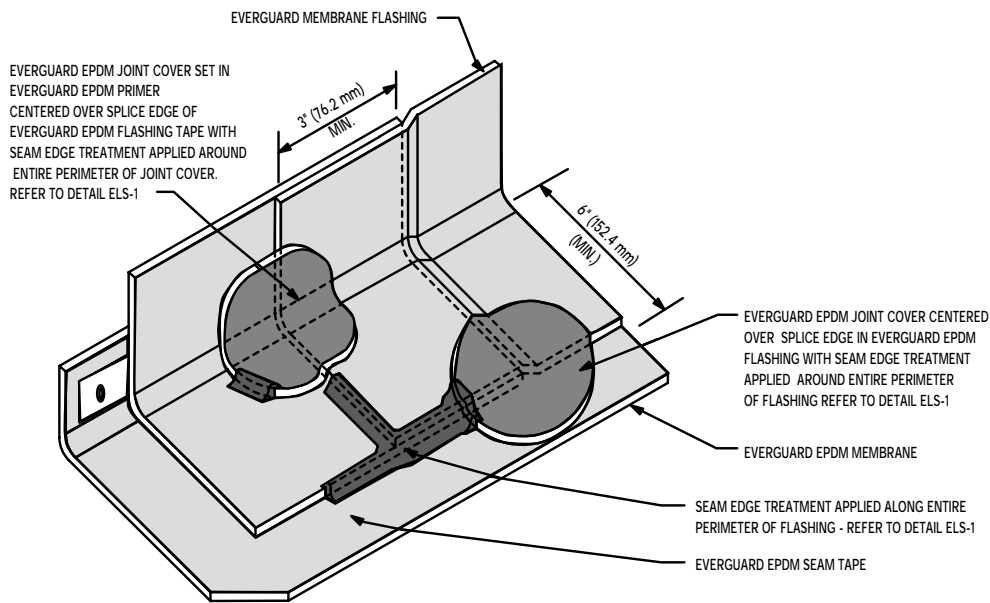
**EBT-11**



EVERGUARD EPDM JOINT COVER LAP JOINT

SYSTEMS: ALL  
 FOR USE IN GUARANTEED SYSTEMS: Up to 20 Years

**EBT-12**



NOTE:

1. REFER TO EVERGUARD EPDM ACCEPTED BASE-TIE-IN, TERMINATION, AND SPLICE DETAILS.
2. JOINT COVERS MAY ALSO BE FABRICATED WITH EVERGUARD EPDM FLASHING TAPE OR EVERGUARD EPDM UNCURED FLASHING PROVIDED THE COVER EXTENDS THREE INCHES FROM THE "T" JOINT IN ALL DIRECTIONS.
3. REGARDLESS OF JOINT COVER MATERIAL, THE ENTIRE PERIMETER OF THE COVER MUST HAVE EDGE TREATMENT APPLIED.
4. WHEN USING EVERGUARD EPDM FLASHING TAPE OR EVERGUARD EPDM JOINT COVERS THE SPLICE AREA OF THE EPDM MUST FIRST BE PREPARED WITH EVERGUARD EPDM PRIMER.

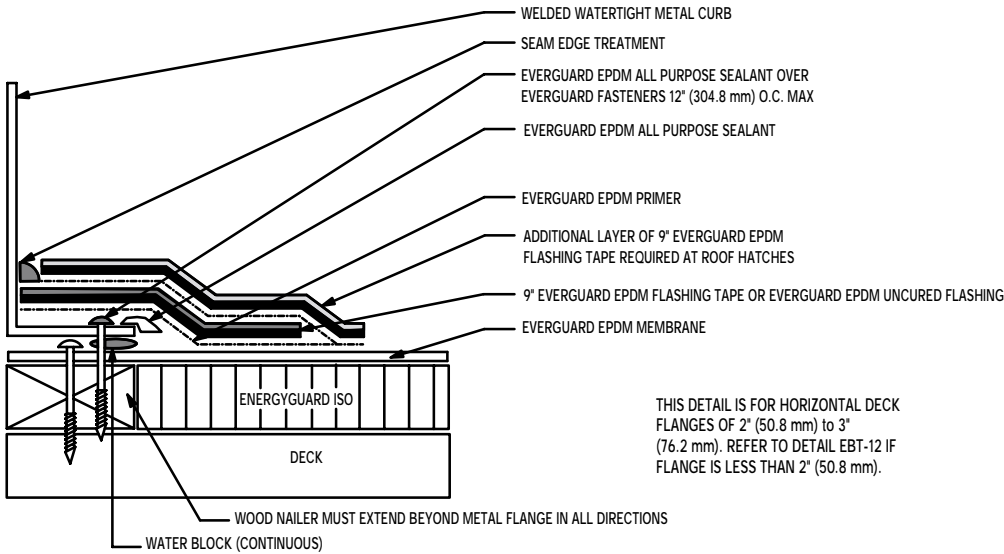
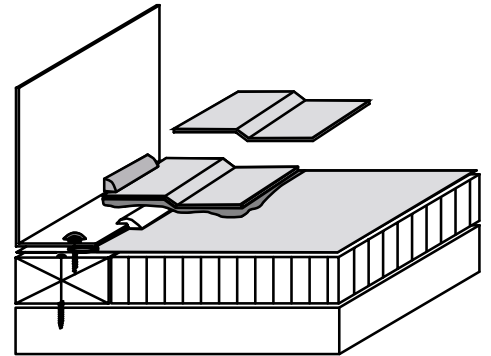
EVERGUARD EPDM JOINT COVER LAP JOINT

SYSTEMS: ALL  
FOR USE IN GUARANTEED SYSTEMS: Up to 20 Years

EVERGUARD® EPDM  
EverGuard EPDM Joint Cover over Lap Joint

September 2002  
Interim Updates at [www.gaf.com](http://www.gaf.com)

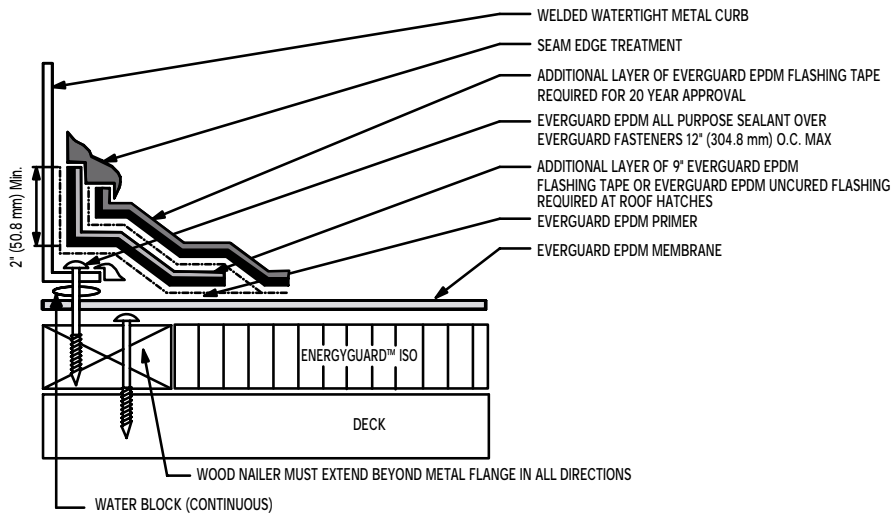
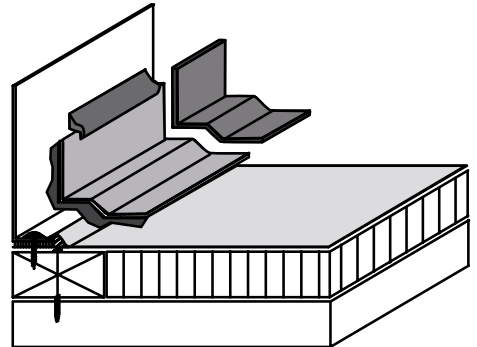
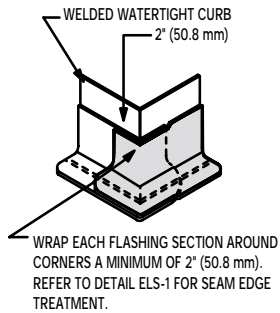
**EBT-13**



THIS DETAIL IS FOR HORIZONTAL DECK FLANGES OF 2" (50.8 mm) to 3" (76.2 mm). REFER TO DETAIL EBT-12 IF FLANGE IS LESS THAN 2" (50.8 mm).

SYSTEMS: ALL  
 FOR USE IN GUARANTEED SYSTEMS: Up to 20 Years

## EBT-14



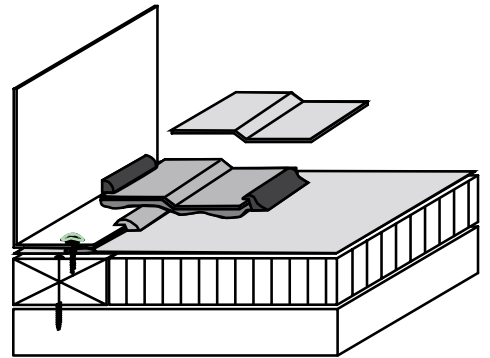
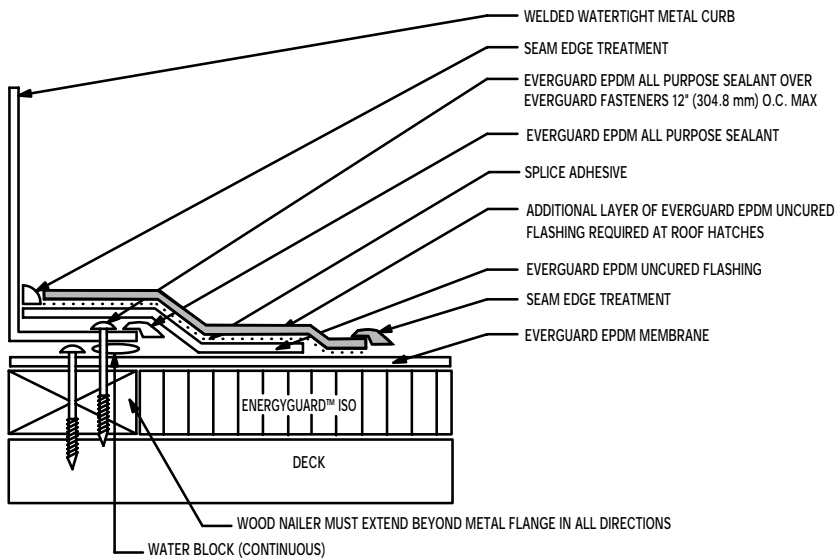
SYSTEMS: ALL  
FOR USE IN GUARANTEED SYSTEMS: Up to 20 Years

EVERGUARD® EPDM  
Welded Watertight Curb Flashing using EverGuard EPDM Flashing Tape

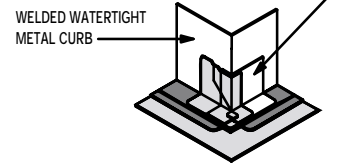
**EBT-15**

September 2002  
Interim Updates at [www.gaf.com](http://www.gaf.com)



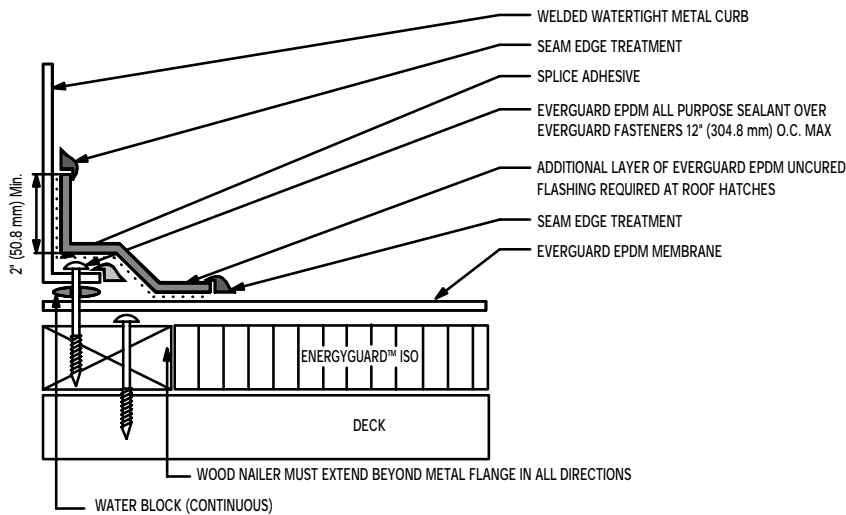
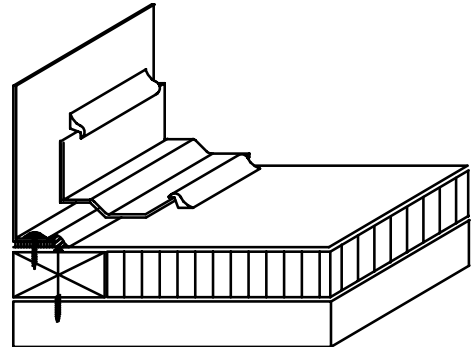
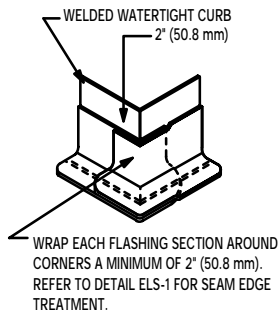


ALL CORNERS REQUIRE TWO LAYERS OF 6" (152.4 mm) x 6" (152.4 mm) EVERGUARD EPDM UNCURED FLASHING 3' ON THE VERTICAL AND HORIZONTAL SURFACES. SEAM EDGE TREATMENT APPLIED CONTINUOUSLY AT ALL SPLICE EDGES. REFER TO DETAIL ELS-1.



THIS DETAIL IS FOR HORIZONTAL DECK FLANGES OF 2" (50.8 mm) to 3" (76.2 mm). REFER TO DETAIL EBT-12 IF FLANGE IS LESS THAN 2" (50.8 mm).

SYSTEMS: ALL  
FOR USE IN GUARANTEED SYSTEMS: Up to 15 Years

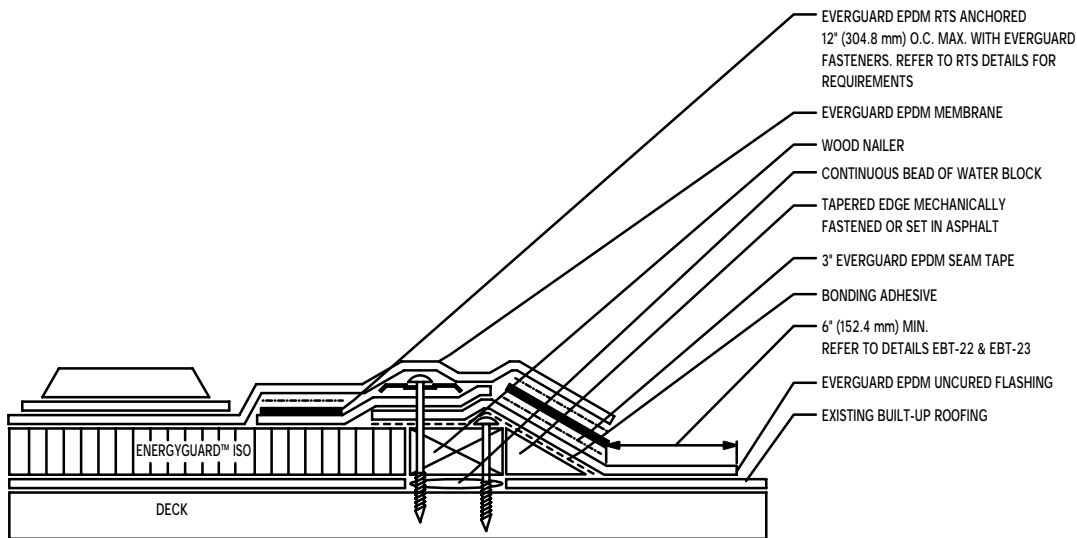
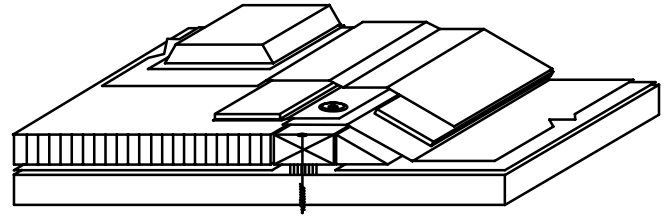


SYSTEMS: ALL  
FOR USE IN GUARANTEED SYSTEMS: Up to 15 Years

EVERGUARD® EPDM  
Welded Watertight Curb Flashing using EverGuard EPDM Uncured Flashing

**EBT-17**

September 2002  
Interim Updates at [www.gaf.com](http://www.gaf.com)



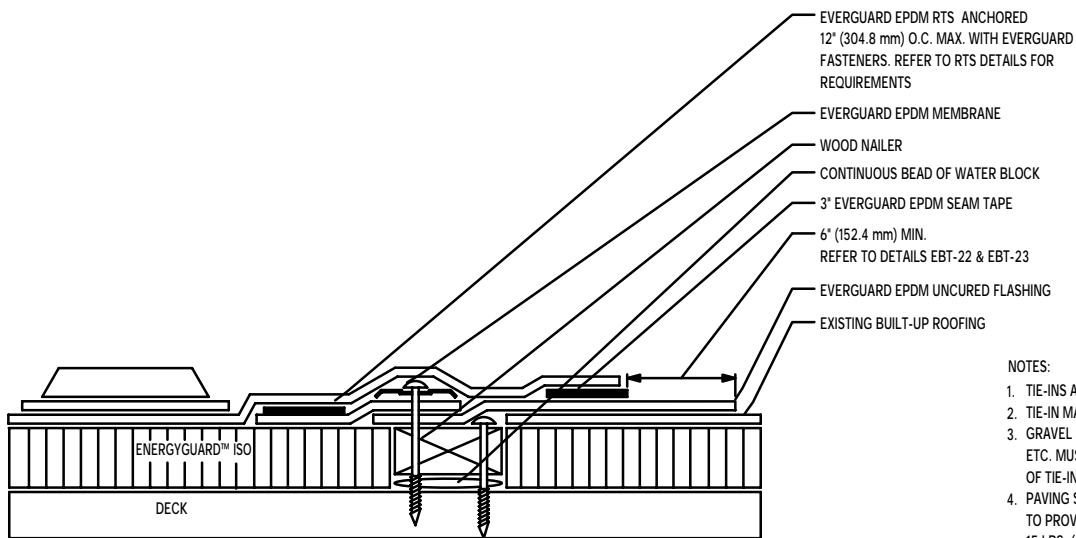
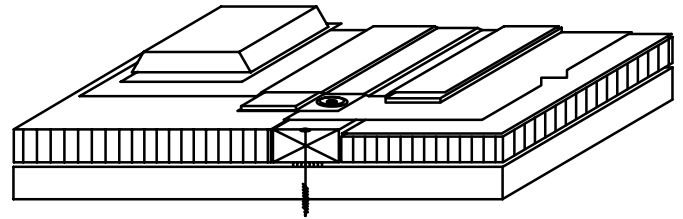
- EVERGUARD EPDM RTS ANCHORED 12" (304.8 mm) O.C. MAX. WITH EVERGUARD FASTENERS. REFER TO RTS DETAILS FOR REQUIREMENTS
- EVERGUARD EPDM MEMBRANE
- WOOD NAILER
- CONTINUOUS BEAD OF WATER BLOCK
- TAPERED EDGE MECHANICALLY FASTENED OR SET IN ASPHALT
- 3' EVERGUARD EPDM SEAM TAPE
- BONDING ADHESIVE
- 6" (152.4 mm) MIN. REFER TO DETAILS EBT-22 & EBT-23
- EVERGUARD EPDM UNCURED FLASHING
- EXISTING BUILT-UP ROOFING

NOTES:

1. TIE-INS ARE NOT GUARANTEED BY GAFMC.
2. TIE-IN MATERIAL SHALL BE SAME AS EXISTING BUR.
3. GRAVEL SURFACING, IRREGULARITIES, MOISTURE ETC. MUST BE REMOVED PRIOR TO INSTALLATION OF TIE-IN.
4. PAVING STONE REQUIRED WITH BALLASTED SYSTEMS TO PROVIDE GRAVEL RETENTION. PAVING STONE MINIMUM 15 LBS. (6.8 KG) PER SQ. FT. WITH CUSHION LAYER. (BALLASTED SYSTEMS ONLY)
5. DO NOT USE THIS DETAIL WHERE WATER PONDS OR FLOWS AGAINST TIE-IN. IF SO, CONSULT EVERGUARD CONTRACTOR SERVICES DEPARTMENT.

SYSTEMS: ALL  
FOR USE IN GUARANTEED SYSTEMS: Up to 15 Years

# EBT-18



NOTES:

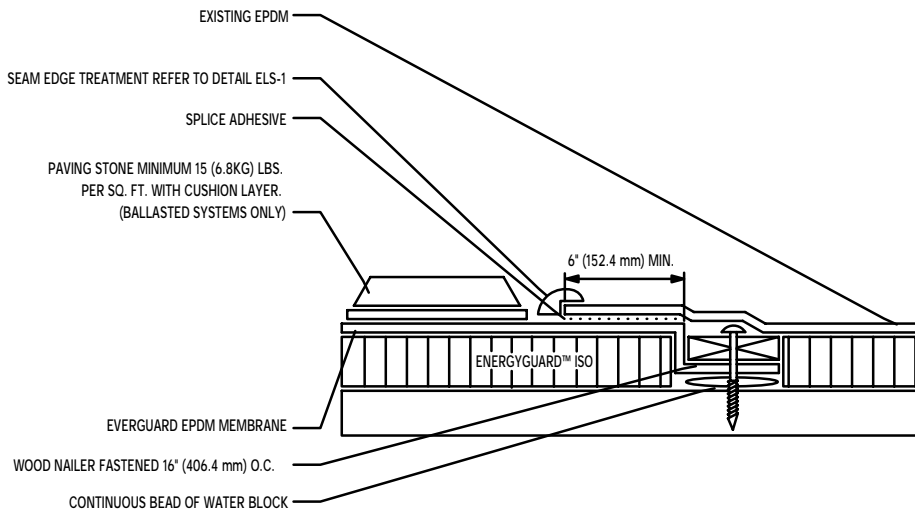
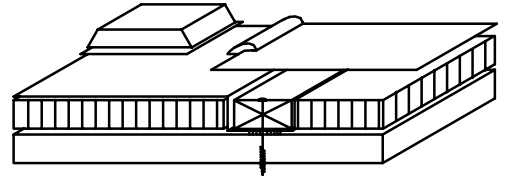
1. TIE-INS ARE NOT WARRANTED BY GAFMC.
2. TIE-IN MATERIAL SHALL BE SAME AS EXISTING BUR.
3. GRAVEL SURFACING, IRREGULARITIES, MOISTURE ETC. MUST BE REMOVED PRIOR TO INSTALLATION OF TIE-IN.
4. PAVING STONE REQUIRED WITH BALLASTED SYSTEMS TO PROVIDE GRAVEL RETENTION. PAVING STONE MINIMUM 15 LBS. (6.8 KG) PER SQ. FT. WITH CUSHION LAYER. (BALLASTED SYSTEMS ONLY)
5. DO NOT USE THIS DETAIL WHERE WATER PONDS OR FLOWS AGAINST TIE-IN. IF SO, CONSULT EVERGUARD CONTRACTOR SERVICES DEPARTMENT.

SYSTEMS: ALL  
 FOR USE IN GUARANTEED SYSTEMS: Up to 15 Years

EVERGUARD® EPDM  
 Built-Up Roofing Tie-In

September 2002  
 Interim Updates at [www.gaf.com](http://www.gaf.com)

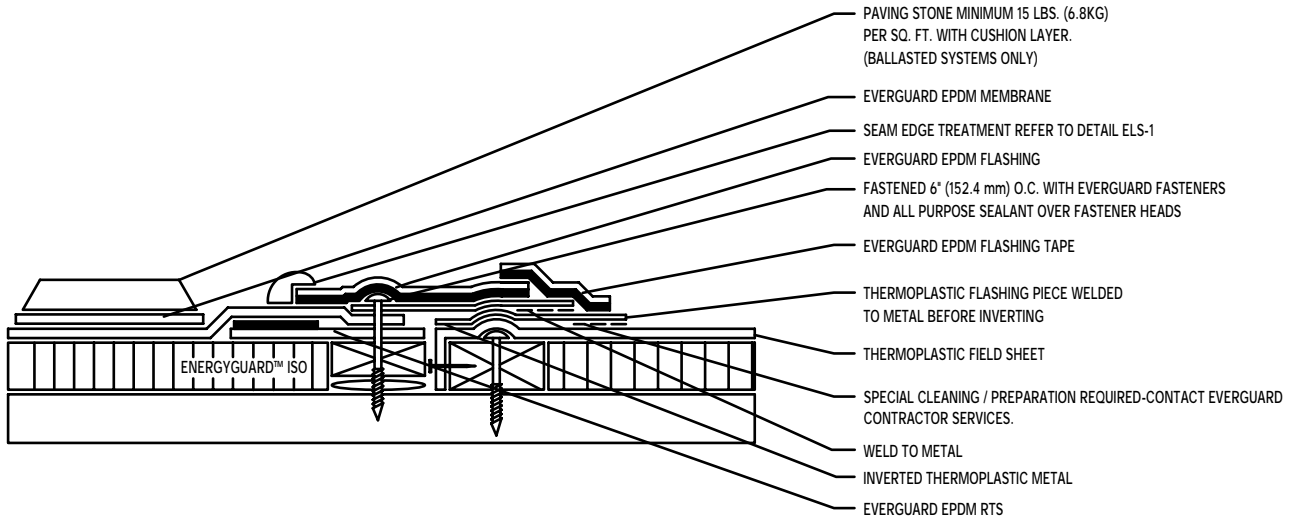
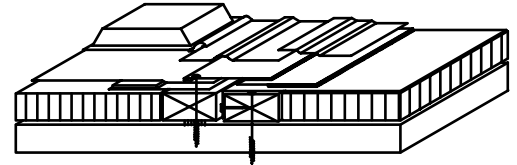
**EBT-19**



NOTES:

1. TIE-INS ARE NOT GUARANTEED BY GAFMC.
2. DO NOT USE THIS DETAIL WHERE WATER PONDS OR FLOWS AGAINST TIE-IN. IF SO, CONSULT EVERGUARD CONTRACTOR SERVICES DEPARTMENT.

SYSTEMS: ALL  
 FOR USE IN GUARANTEED SYSTEMS: Up to 15 Years



NOTES:

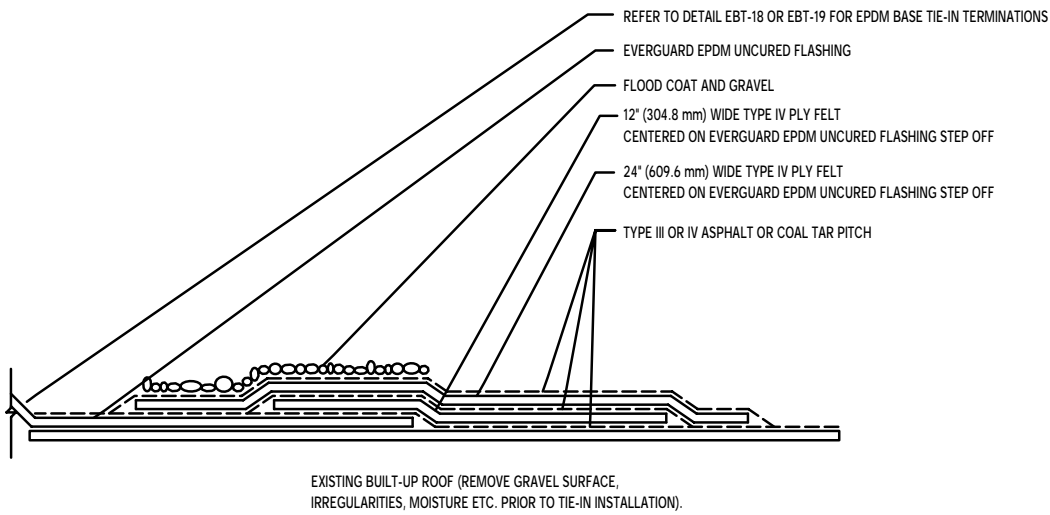
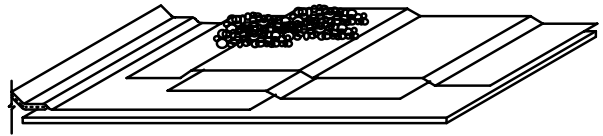
1. TIE-INS ARE NOT GUARANTEED BY GAFMC.
2. IF TIE-IN TO METAL DECK IS REQUIRED, DRILL HOLES IN BOTTOM OF FLUTES OR SEAL NAILER TO THE DECK, IE (POURABLE SEALER, SPRAY FOAM, ETC.).

SYSTEMS: ALL  
FOR USE IN GUARANTEED SYSTEMS: Up to 15 Years

EVERGUARD® EPDM  
EPDM to Thermoplastic Roof Tie-In

September 2002  
Interim Updates at [www.gaf.com](http://www.gaf.com)

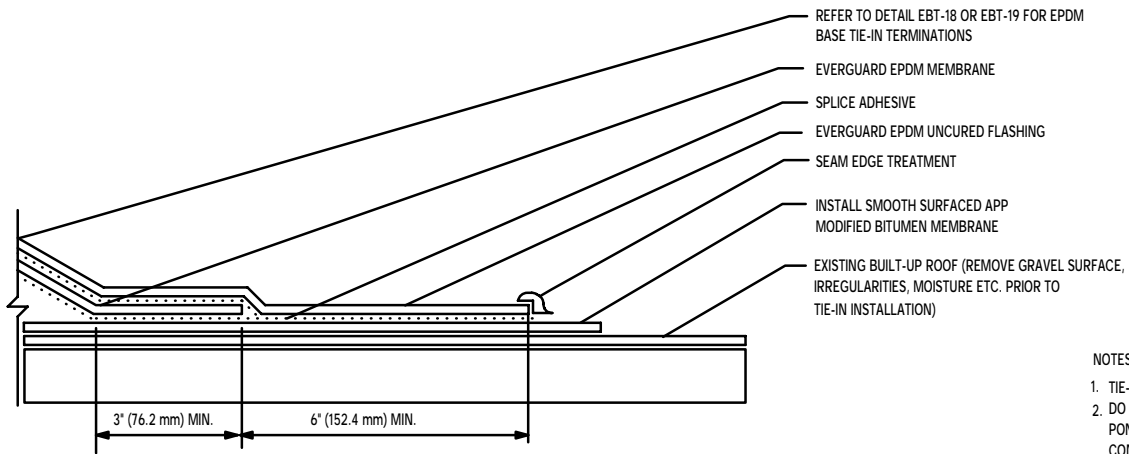
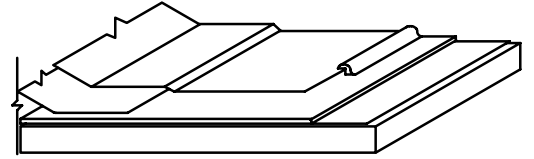
**EBT-21**



- NOTES:
1. TIE-INS ARE NOT GUARANTEED BY GAFMC.
  2. DO NOT USE THESE DETAILS WHERE WATER PONDS OR FLOWS AGAINST TIE-IN. IF SO, CONSULT EVERGUARD CONTRACTOR SERVICES DEPARTMENT.

SYSTEMS: ALL  
FOR USE IN GUARANTEED SYSTEMS: Up to 15 Years

## EBT-22



NOTES:

1. TIE-INS ARE NOT GUARANTEED BY GAFMC.
2. DO NOT USE THESE DETAILS WHERE WATER PONDS OR FLOWS AGAINST TIE-IN. IF SO, CONSULT EVERGUARD CONTRACTOR SERVICES DEPARTMENT.

SYSTEMS: ALL  
FOR USE IN GUARANTEED SYSTEMS: Up to 15 Years

EVERGUARD® EPDM  
Modified Bitumen Tie-In to Built-Up Roof

September 2002  
Interim Updates at [www.gaf.com](http://www.gaf.com)

**EBT-23**