

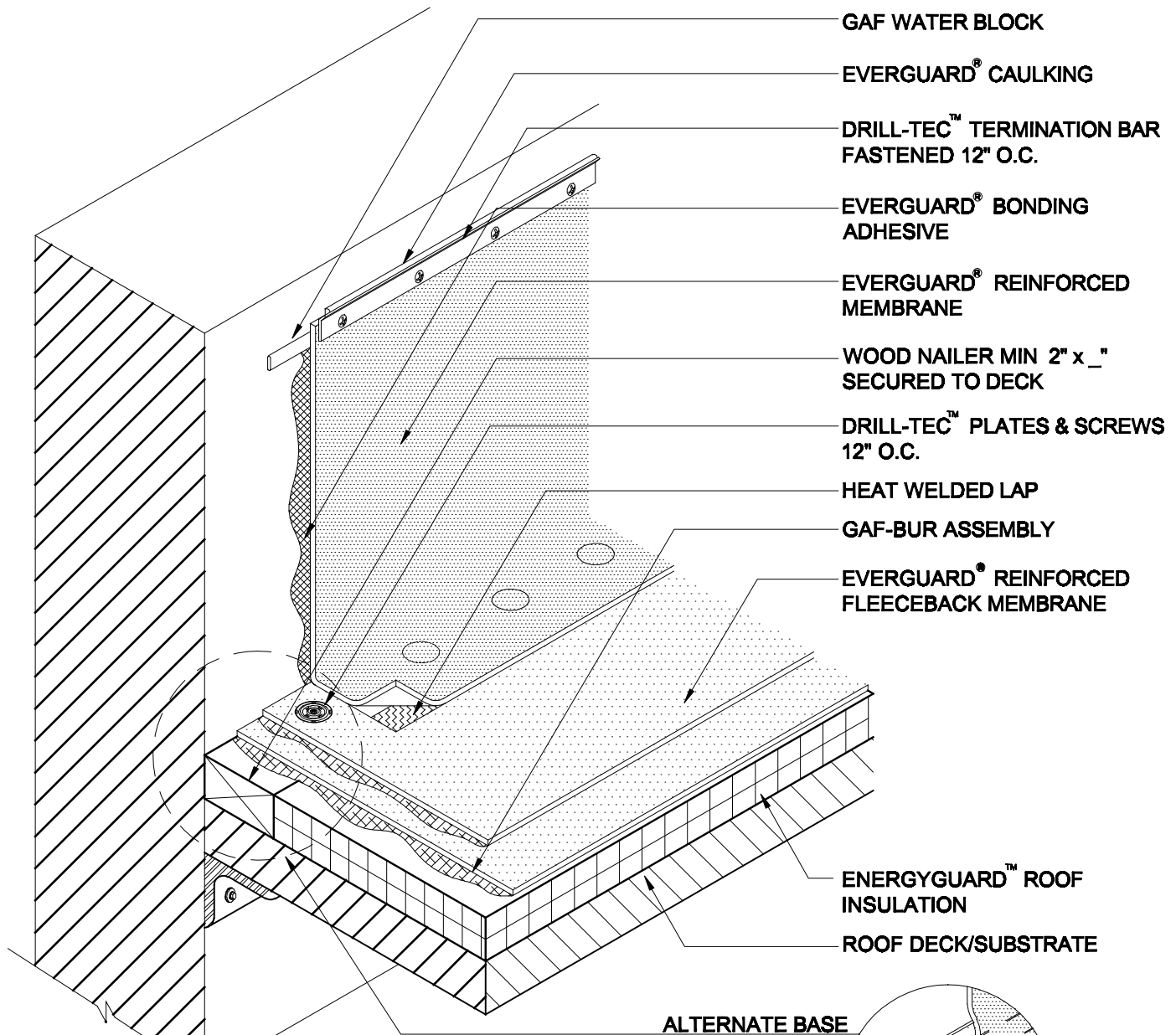
TriPosit®  
Wall Flashing With Counter Flashing  
TRI 301

Diagram

Updated: 11/06

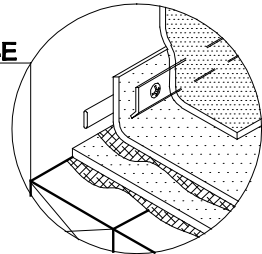


*Quality You Can Trust Since 1886...  
From North America's Largest Roofing Manufacturer™*



**NOTE:**

1. FLASHING MUST BE A MIN. OF 8" HIGH.
2. FUNCTIONAL WEEP HOLES MUST NOT BE BLOCKED.
3. REUSE OF EXISTING COUNTERFLASHING IS ACCEPTABLE IF ABOVE MAXIMUM FLOOD LEVEL AND METAL IS IN GOOD CONDITION AND MIN. 24 GAUGE.
4. FOR INSULATION THICKNESS GREATER THAN 8" CONTACT GAFMC CONTRACTOR SERVICES FOR ALTERNATE MEMBRANE ATTACHMENT REQUIREMENTS.
5. ADD TOP EDGE TERMINATION IMMEDIATELY AFTER MEMBRANE INSTALLATION.
6. APPLY EVERGUARD® TPO CUT EDGE SEALANT TO ALL CUT REINFORCED TPO EDGES ( REFER TO DETAIL MA/FA/BA 115 ).



**WALL FLASHING WITH COUNTERFLASHING**

DRAWING #  
**TRI 301**

SCALE	ISSUE/ REVISION DATE
N.T.S.	11-01-06