

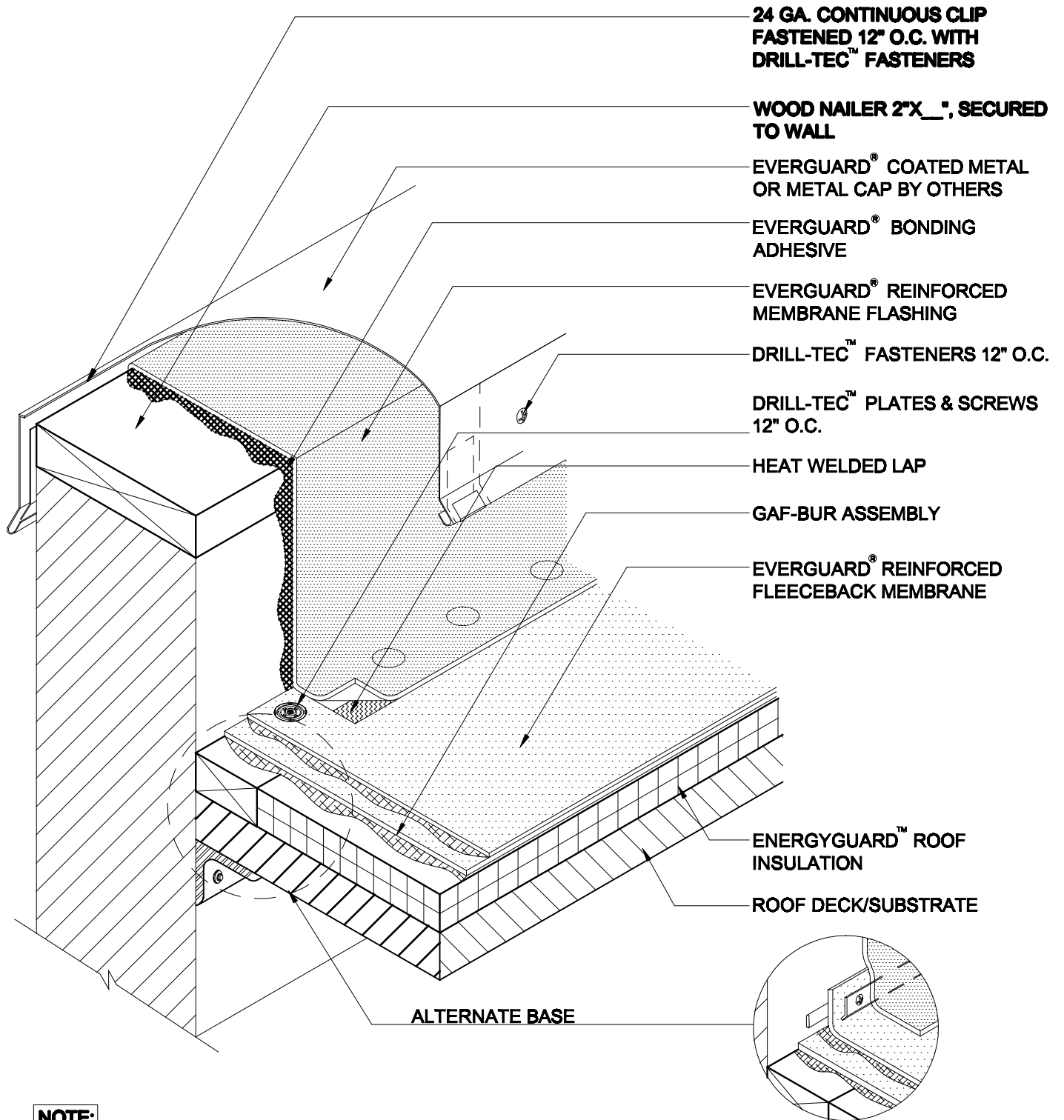
TriPosit®
Wall Flashing With Coping
TRI 302

Diagram

Updated: 11/06



*Quality You Can Trust Since 1886...
From North America's Largest Roofing Manufacturer™*



- 24 GA. CONTINUOUS CLIP FASTENED 12" O.C. WITH DRILL-TEC™ FASTENERS
- WOOD NAILER 2"x__", SECURED TO WALL
- EVERGUARD® COATED METAL OR METAL CAP BY OTHERS
- EVERGUARD® BONDING ADHESIVE
- EVERGUARD® REINFORCED MEMBRANE FLASHING
- DRILL-TEC™ FASTENERS 12" O.C.
- DRILL-TEC™ PLATES & SCREWS 12" O.C.
- HEAT WELDED LAP
- GAF-BUR ASSEMBLY
- EVERGUARD® REINFORCED FLEECEBACK MEMBRANE
- ENERGYGUARD™ ROOF INSULATION
- ROOF DECK/SUBSTRATE

ALTERNATE BASE

NOTE:

1. FOR INSULATION THICKNESS GREATER THAN 8" CONTACT GAFMC GUARANTEE SERVICES FOR ALTERNATE MEMBRANE ATTACHMENT REQUIREMENTS.
2. APPLY EVERGUARD® TPO CUT EDGE SEALANT TO ALL CUT REINFORCED TPO EDGES (REFER TO DETAIL MA/FA/BA 115).



WALL FLASHING WITH COPING

DRAWING #

TRI 302

SCALE
N.T.S.

ISSUE/ REVISION DATE
11-01-06