

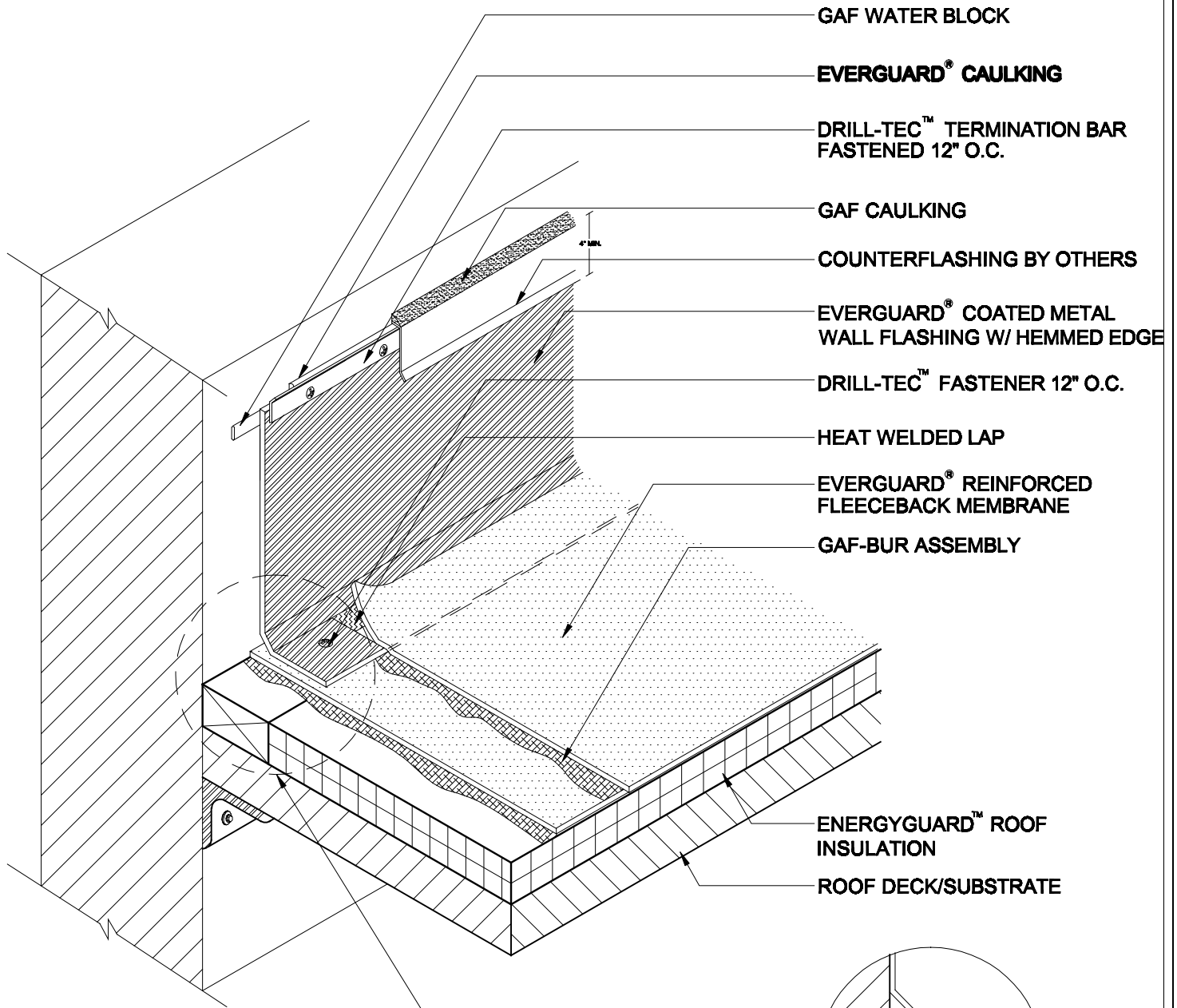
TriPosit®
Coated Metal Wall Flashing
TRI 308

Diagram

Updated: 11/06



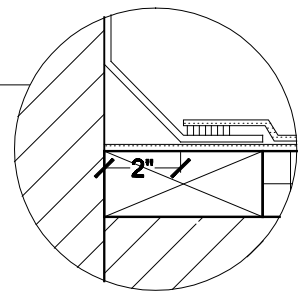
*Quality You Can Trust Since 1886...
From North America's Largest Roofing Manufacturer™*



- GAF WATER BLOCK
- EVERGUARD® CAULKING
- DRILL-TEC™ TERMINATION BAR FASTENED 12" O.C.
- GAF CAULKING
- COUNTERFLASHING BY OTHERS
- EVERGUARD® COATED METAL WALL FLASHING W/ HEMMED EDGE
- DRILL-TEC™ FASTENER 12" O.C.
- HEAT WELDED LAP
- EVERGUARD® REINFORCED FLEECEBACK MEMBRANE
- GAF-BUR ASSEMBLY
- ENERGYGUARD™ ROOF INSULATION
- ROOF DECK/SUBSTRATE

NOTE:

1. APPLY EVERGUARD® TPO CUT EDGE SEALANT TO ALL CUT REINFORCED TPO EDGES (REFER TO DETAIL MAFA/BA 115).



COATED METAL WALL FLASHING

DRAWING #
TRI 308

SCALE	ISSUE/ REVISION DATE
N.T.S.	11-01-06