

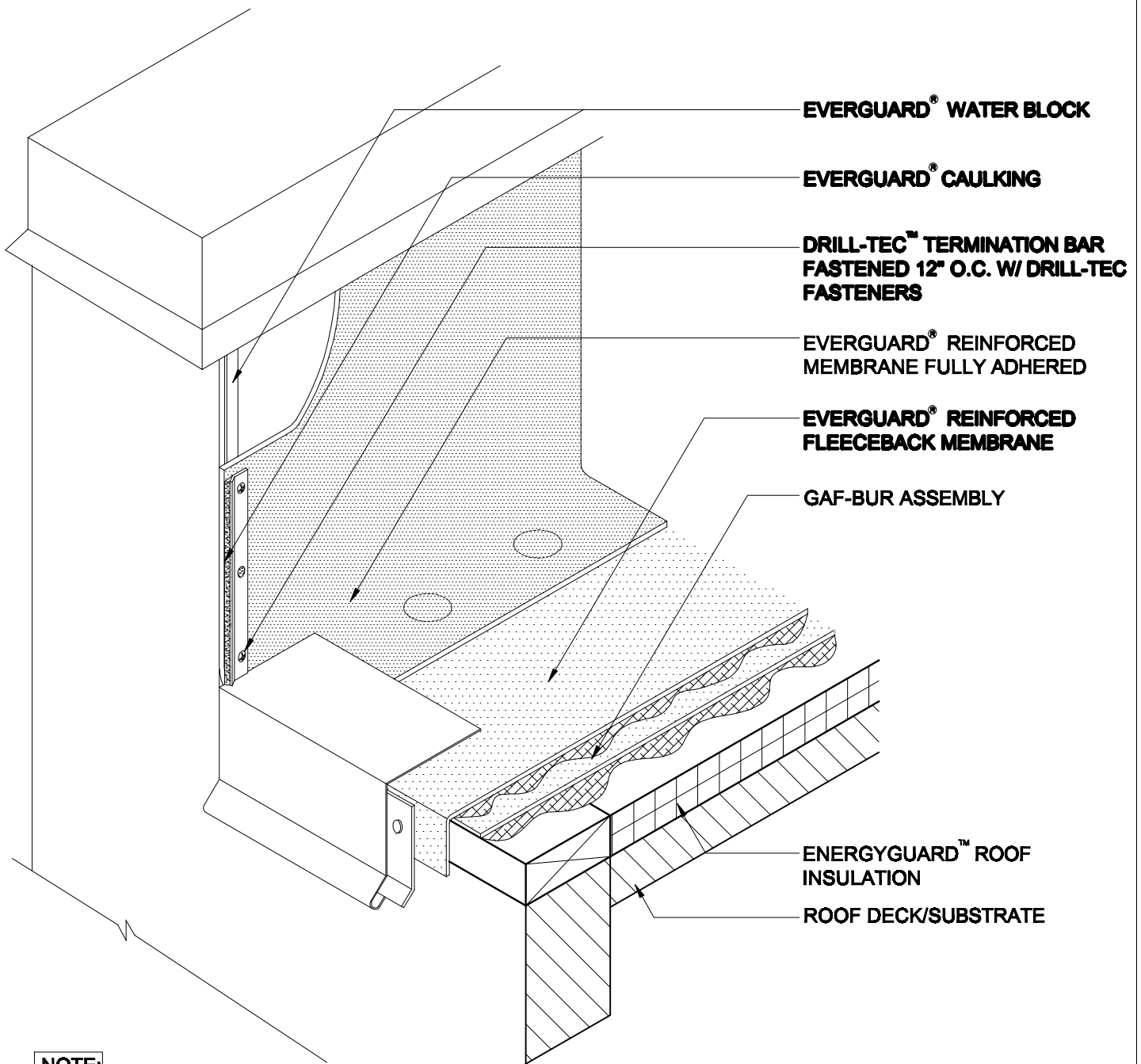
TriPosit®  
Wall Flashing With Termination Bar  
TRI 313

Diagram

Updated: 11/06



*Quality You Can Trust Since 1886...  
From North America's Largest Roofing Manufacturer™*



**NOTE:**

1. EVERGUARD® CAULKING TO BE ADDED TO ALL TERMINATION BAR EDGES AND DRILL-TEC™ FASTENER HEADS AND ANY OPEN HOLES.
2. APPLY EVERGUARD® TPO CUT EDGE SEALANT TO ALL CUT REINFORCED TPO EDGES (REFER TO DETAIL MA/FA/BA 115).