

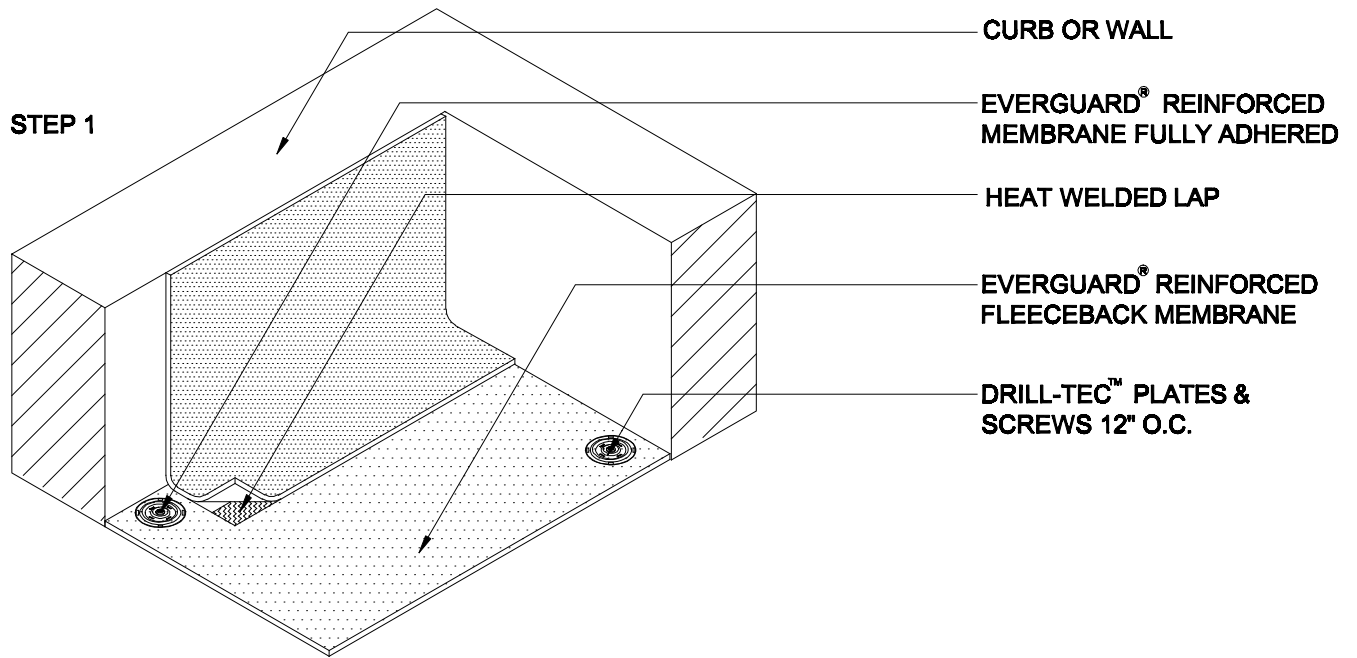
TriPosit®  
Field Fabricated Inside Corner  
TRI 315B

Diagram

Updated: 11/06



*Quality You Can Trust Since 1886...  
From North America's Largest Roofing Manufacturer™*



CURB OR WALL

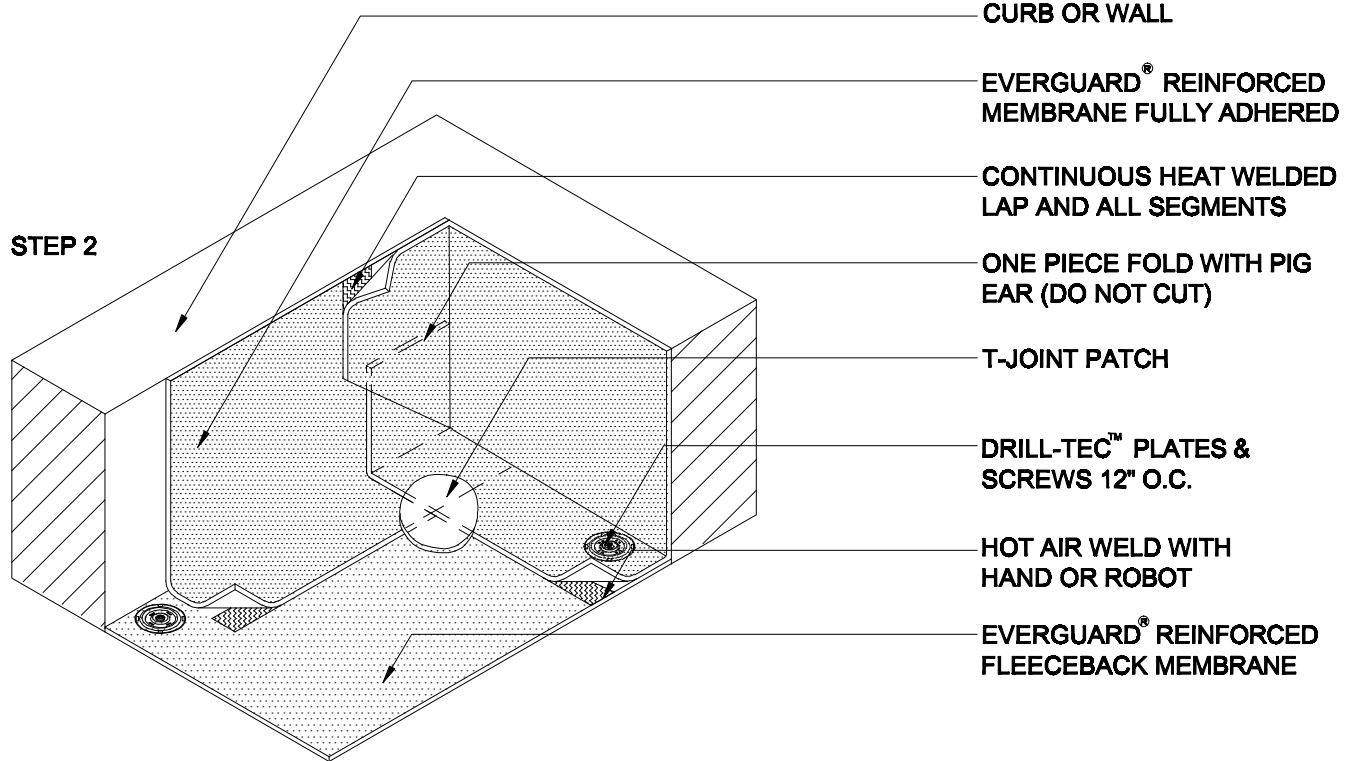
STEP 1

EVERGUARD® REINFORCED MEMBRANE FULLY ADHERED

HEAT WELDED LAP

EVERGUARD® REINFORCED FLEECEBACK MEMBRANE

DRILL-TEC™ PLATES & SCREWS 12" O.C.



CURB OR WALL

STEP 2

EVERGUARD® REINFORCED MEMBRANE FULLY ADHERED

CONTINUOUS HEAT WELDED LAP AND ALL SEGMENTS

ONE PIECE FOLD WITH PIG EAR (DO NOT CUT)

T-JOINT PATCH

DRILL-TEC™ PLATES & SCREWS 12" O.C.

HOT AIR WELD WITH HAND OR ROBOT

EVERGUARD® REINFORCED FLEECEBACK MEMBRANE

**NOTE:**

1. ALL SEGMENTS OF THE EAR MUST BE WELDED TOGETHER AND WELDED TO THE WALL
2. GAF - BUR ASSEMBLY (NOT SHOWN) REQ'D FOR TRI SYSTEMS.
3. APPLY EVERGUARD® TPO CUT EDGE SEALANT TO ALL CUT REINFORCED TPO EDGES (REFER TO DETAIL MA/FA/BA 115)



**FIELD FABRICATED INSIDE CORNER**

DRAWING #

**TRI 315B**

SCALE  
N.T.S.

ISSUE/ REVISION DATE  
11-01-06