

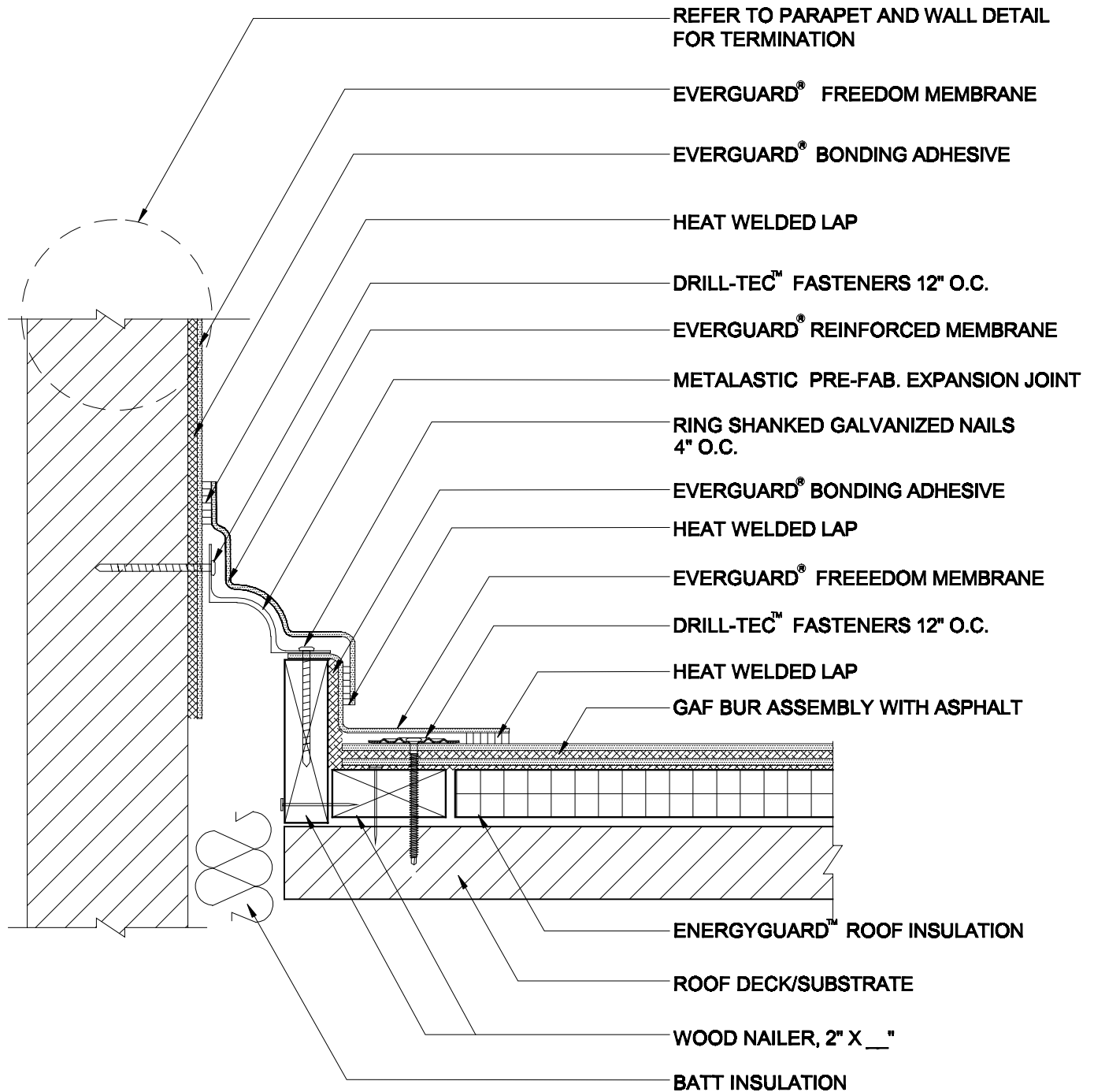
TriPosit®
Wall Expansion Joint - Curb Type
TRI 404

Diagram

Updated: 11/06



*Quality You Can Trust Since 1886...
From North America's Largest Roofing Manufacturer™*



NOTE:

1. FOR TPO APPLICATIONS TAPE AND PRIMER SUPPLIED WITH THE EVERGUARD® PRE FAB OR METALASTIC EVERGUARD® EXPANSION JOINT MUST BE USED TO COMPLETE SEAMING OF THE VERTICAL SEAM. THIS DETAIL CAN ALSO BE FIELD FABRICATED WITH REINFORCED FIELD SHEET OF THE SAME MILLAGE AS THE DECK SHEET.

2. APPLY EVERGUARD® TPO CUT EDGE SEALANT TO ALL CUT REINFORCED TPO EDGES (REFER TO DETAIL MA/FA/BA 115).



WALL EXPANSION JOINT - CURB TYPE

DRAWING #

TRI 404

SCALE

N.T.S.

ISSUE/ REVISION DATE

11-01-06