

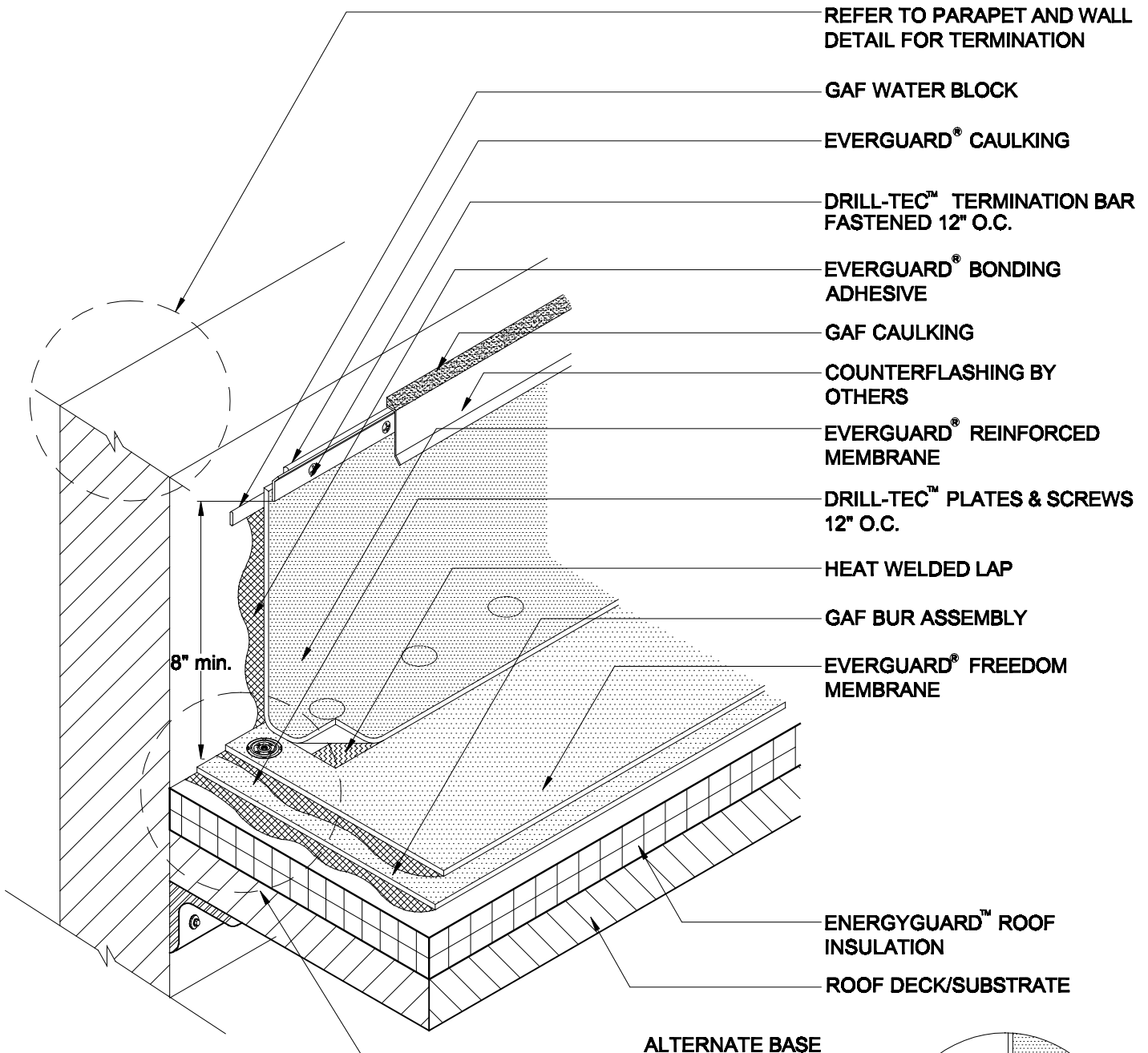
TriPosite®
Flashing With Termination Bar
TRI 502

Diagram

Updated: 11/06



*Quality You Can Trust Since 1886...
From North America's Largest Roofing Manufacturer™*

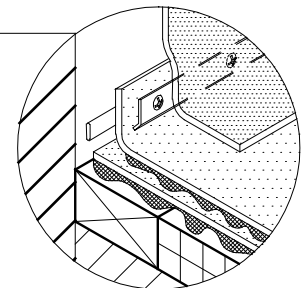


- REFER TO PARAPET AND WALL
DETAIL FOR TERMINATION
- GAF WATER BLOCK
- EVERGUARD® CAULKING
- DRILL-TEC™ TERMINATION BAR
FASTENED 12" O.C.
- EVERGUARD® BONDING
ADHESIVE
- GAF CAULKING
- COUNTERFLASHING BY
OTHERS
- EVERGUARD® REINFORCED
MEMBRANE
- DRILL-TEC™ PLATES & SCREWS
12" O.C.
- HEAT WELDED LAP
- GAF BUR ASSEMBLY
- EVERGUARD® FREEDOM
MEMBRANE
- ENERGYGUARD™ ROOF
INSULATION
- ROOF DECK/SUBSTRATE

ALTERNATE BASE
REFER TO DETAIL 307

NOTE:

1. INCREASED FASTENING TO 6" O.C. MAY BE REQUIRED TO KEEP CONSTANT COMPRESSION OF BAR TO WALL.
2. FOR INSULATION THICKNESS GREATER THAN 8" CONTACT GAFMC CONTRACTOR SERVICES FOR ALTERNATE MEMBRANE ATTACHMENT REQUIREMENTS.
3. APPLY EVERGUARD® TPO CUT EDGE SEALANT TO ALL CUT REINFORCED TPO EDGES (REFER TO DETAIL MA/FA/BA 115).



FLASHING WITH TERMINATION BAR

DRAWING #
TRI 502

SCALE	ISSUE/ REVISION DATE
N.T.S.	11-01-06