

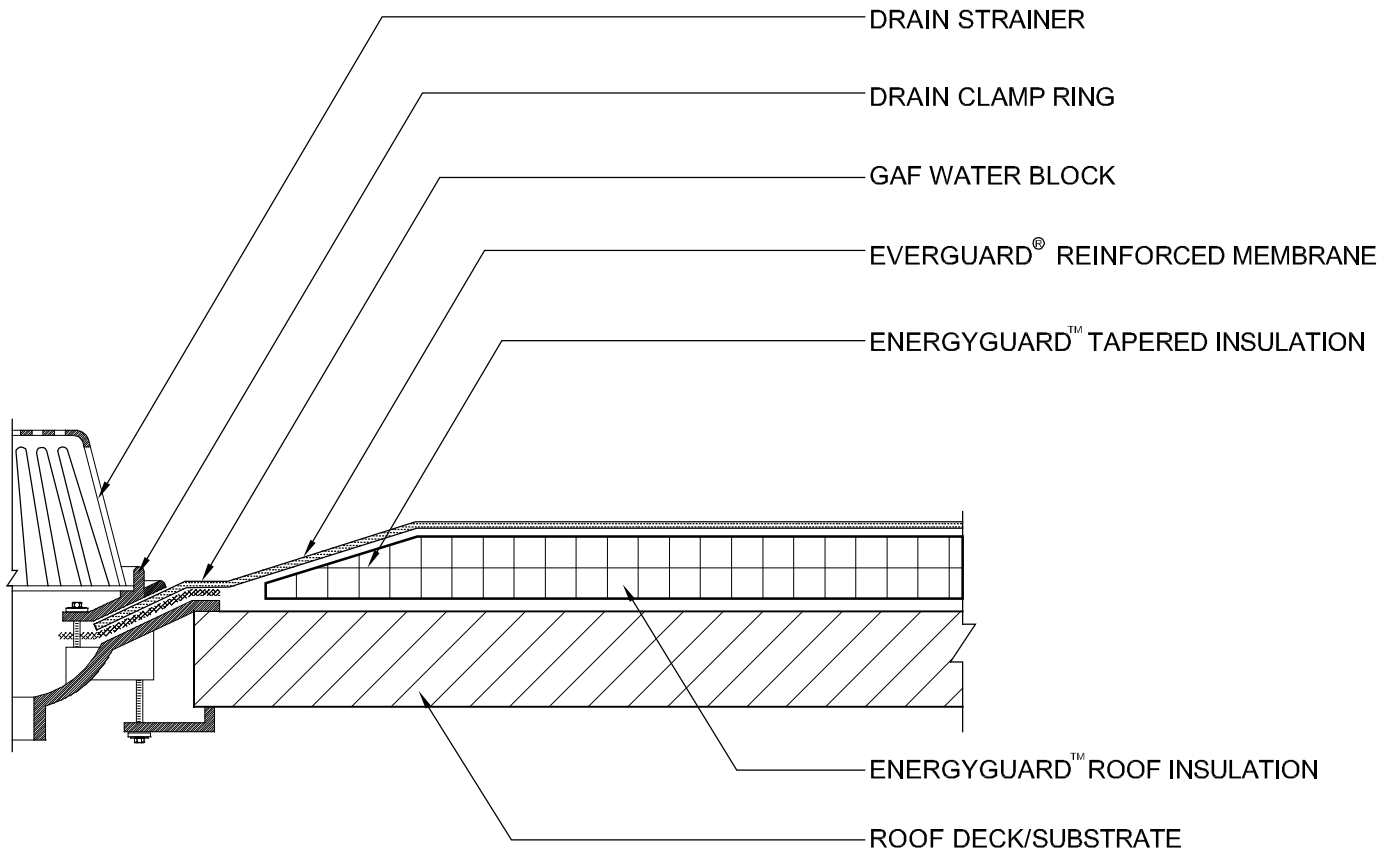
EverGuard®
Standard Roof Drain Flashing
MA/FA/BA 513

Diagram

Updated: 4/09



*Quality You Can Trust Since 1886...
From North America's Largest Roofing Manufacturer™*



NOTE:

1. A FIELD WELD CANNOT PASS WITHIN 9" OF THE CLAMPING, OR WITHIN THE DRAIN SUMP ITSELF.
2. MEMBRANE MUST EXTEND MINIMUM 1" BEYOND THE BOLT HOLES, THE CLAMPING RING BOLTS MUST PENETRATE THE MEMBRANE.
3. TAPERED INSULATION TO CREATE A ROOF SUMP MINIMUM 36" X 36" IN SIZE. (IF APPLICABLE)
4. EVERGUARD[®] ADHESIVE/ASPHALT (NOT SHOWN) REQ'D FOR FA SYSTEMS.
5. USE ONE FULL TUBE OF GAF WATER BLOCK PER DRAIN.
6. STONE/PAVER BALLAST (NOT SHOWN) REQUIRED FOR BA SYSTEMS.

| | | | | |
|--|---|--|------------|----------------------|
|  GAF MATERIALS CORPORATION www.gaf.com |  SINGLE-PLY ROOFING SYSTEMS | DRAIN -STANDARD ROOF DRAIN FLASHING | DRAWING # | SYSTEM |
| | ROOF PENETRATION SERIES | | 513 | MA/FA/BA |
| | | | SCALE | ISSUE/ REVISION DATE |
| | | | N.T.S. | 4-01-09 |