

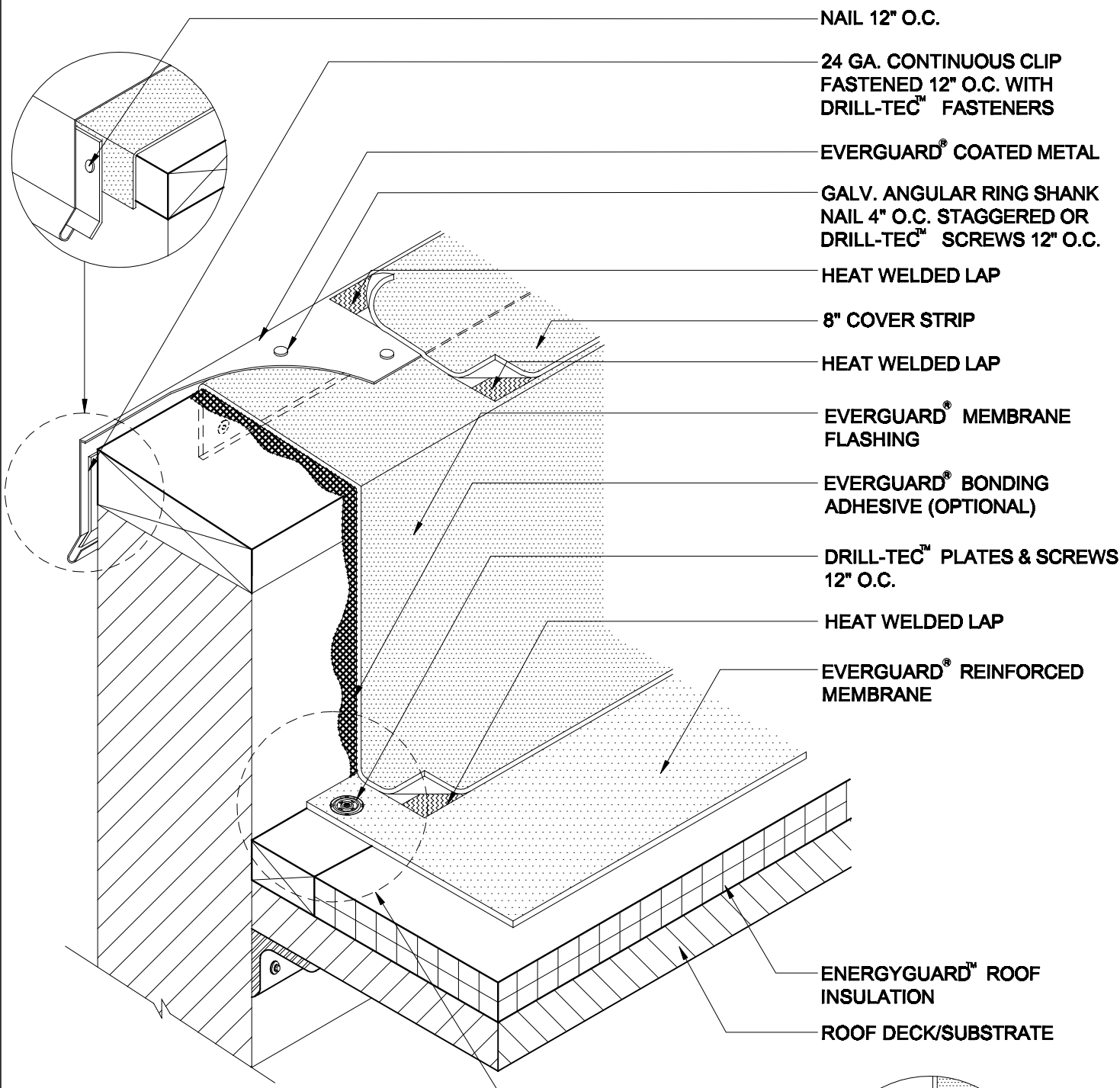
EverGuard®
Wall Flashing With Coated Metal Edge
MA/FA/BA 304

Diagram

Updated: 11/06



*Quality You Can Trust Since 1886...
From North America's Largest Roofing Manufacturer™*

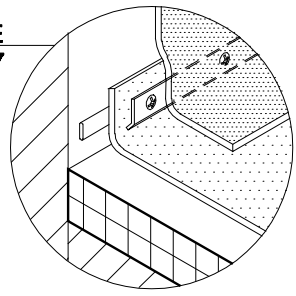


- NAIL 12" O.C.
- 24 GA. CONTINUOUS CLIP FASTENED 12" O.C. WITH DRILL-TEC™ FASTENERS
- EVERGUARD® COATED METAL
- GALV. ANGULAR RING SHANK NAIL 4" O.C. STAGGERED OR DRILL-TEC™ SCREWS 12" O.C.
- HEAT WELDED LAP
- 8" COVER STRIP
- HEAT WELDED LAP
- EVERGUARD® MEMBRANE FLASHING
- EVERGUARD® BONDING ADHESIVE (OPTIONAL)
- DRILL-TEC™ PLATES & SCREWS 12" O.C.
- HEAT WELDED LAP
- EVERGUARD® REINFORCED MEMBRANE
- ENERGYGUARD™ ROOF INSULATION
- ROOF DECK/SUBSTRATE

NOTE:

1. PLATES AND SCREWS 6" O.C. REQ'D FOR BA SYSTEMS.
2. FOR INSULATION THICKNESS GREATER THAN 8", CONTACT GAFMC CONTRACTOR SERVICES FOR ALTERNATE MEMBRANE ATTACHMENT REQUIREMENTS.
3. APPLY EVERGUARD® TPO CUT EDGE SEALANT TO ALL CUT REINFORCED TPO EDGES (REFER TO DETAIL MA/FA/BA 115).

ALTERNATE BASE
REFER TO 307



**WALL FLASHING WITH COATED METAL
EDGE**

DRAWING #
MA/FA/BA 304

SCALE	ISSUE/ REVISION DATE
N.T.S.	11-01-06