

EverGuard®
High Wall Flashing
MA/FA/BA 306

Diagram

Updated: 11/06

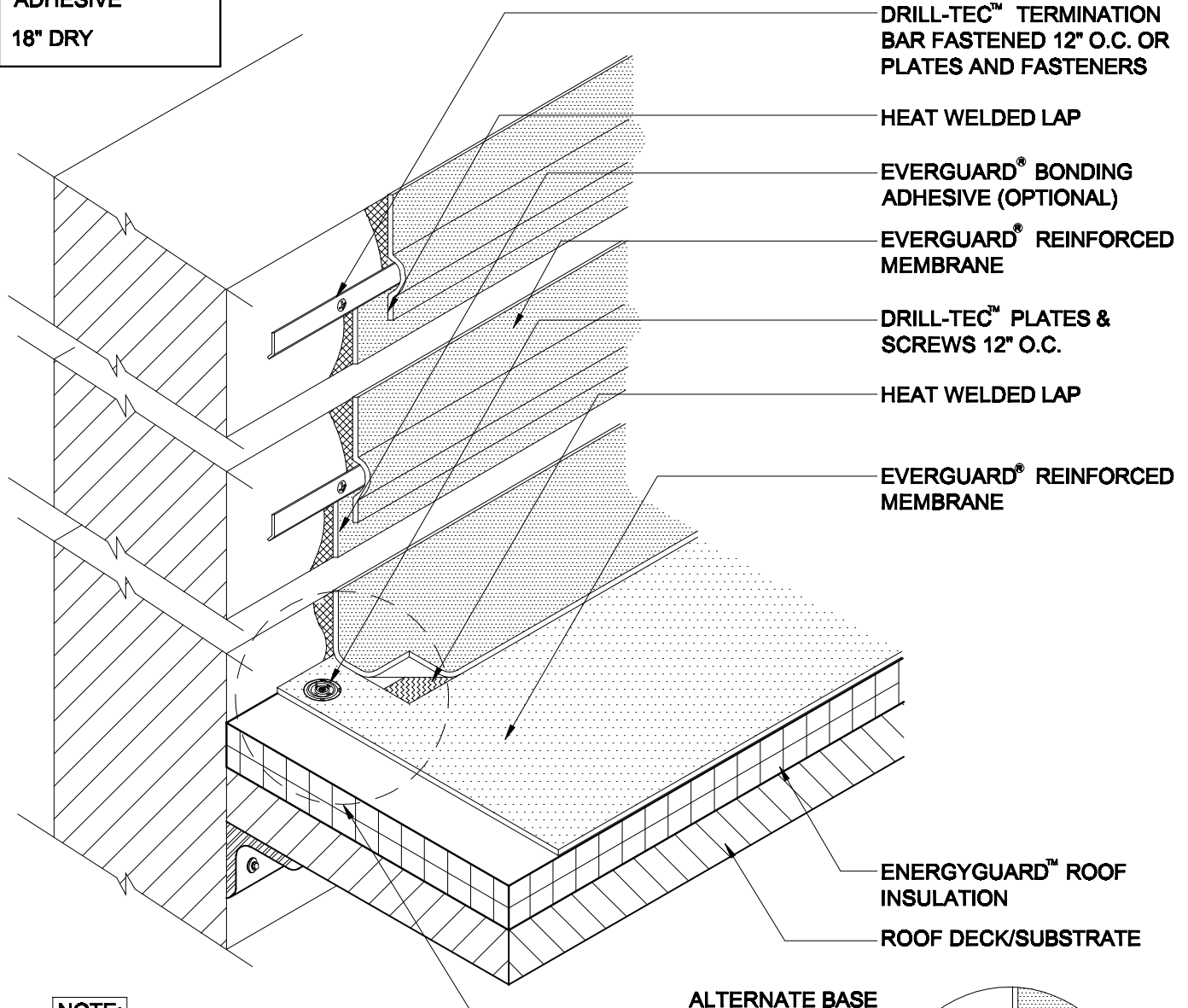


*Quality You Can Trust Since 1886...
From North America's Largest Roofing Manufacturer™*

**INTERMITTENT
FASTENING KEY**

**54" WITH BONDING
ADHESIVE**

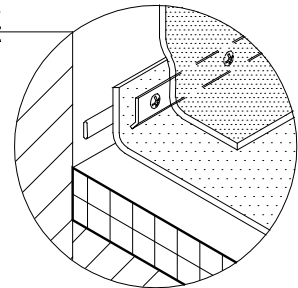
18" DRY



NOTE:

- 1. 18" MAX. DIMENSION FOR LOOSE-APPLIED FLASHINGS.**
- 2. 54" MAX. DIMENSION FOR FULLY ADHERED FLASHINGS.**
- 3. PLATES & SCREWS 6" O.C. REQ'D FOR BA SYSTEMS.**
- 4. FOR INSULATION THICKNESS GREATER THAN 8" CONTACT GAFMC CONTRACTOR SERVICES FOR ALTERNATE MEMBRANE ATTACHMENT REQUIREMENTS.**
- 5. APPLY EVERGUARD® TPO CUT EDGE SEALANT TO ALL CUT REINFORCED TPO EDGES (REFER TO DETAIL MA/FA/BA 115).**

**ALTERNATE BASE
REFER TO 307**



HIGH WALL FLASHING

DRAWING #

MA/FA/BA 306

SCALE

N.T.S.

ISSUE/ REVISION DATE

11-01-06