

EverGuard®
Curb Flashing With Termination Bar
MA/FA/BA 504

Diagram

Updated: 7/07

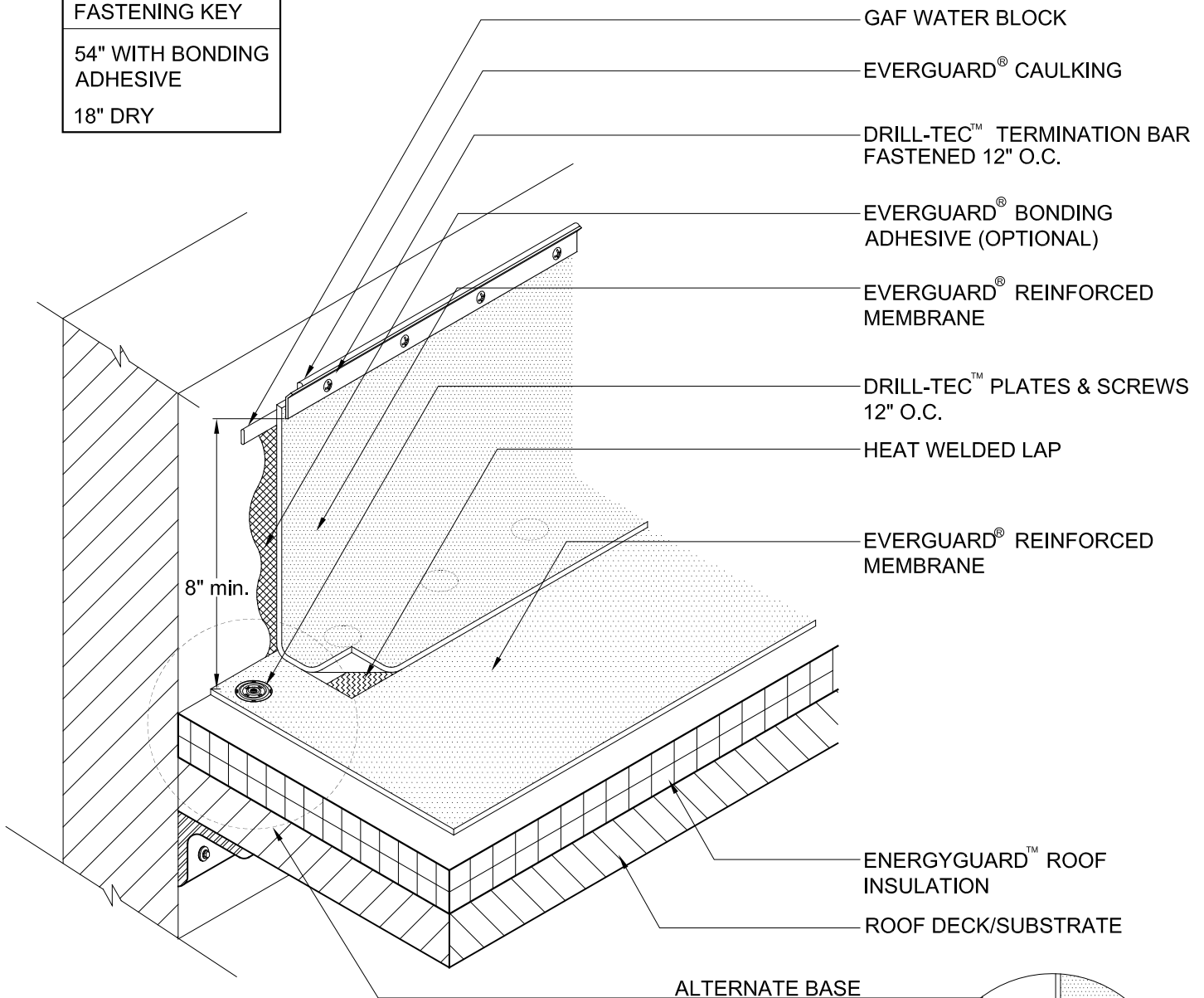


*Quality You Can Trust Since 1886...
From North America's Largest Roofing Manufacturer™*

INTERMITTENT
FASTENING KEY

54" WITH BONDING
ADHESIVE

18" DRY



NOTE:

1. STONE/PAVER BALLAST (NOT SHOWN) REQ'D FOR BA SYSTEMS.
2. PLATES & SCREWS 6" O.C. REQ'D FOR BA SYSTEMS.
3. INCREASED FASTENING TO 6" O.C. MAY BE REQUIRED TO KEEP CONSTANT COMPRESSION OF BAR TO WALL.
4. FOR INSULATION THICKNESS GREATER THAN 8" CONTACT GAFMC CONTRACTOR SERVICES FOR ALTERNATE MEMBRANE ATTACHMENT REQUIREMENTS. FOR ALTERNATE ATTACHMENT REQUIREMENTS. THESE METHODS MAY INCLUDE THE USE OF A HARD BOARD COVERING THE ASSEMBLY.
5. APPLY EVERGUARD® TPO CUT EDGE SEALANT TO ALL CUT REINFORCED TPO EDGES (REFER TO DETAIL MA/FA/BA 115).

