

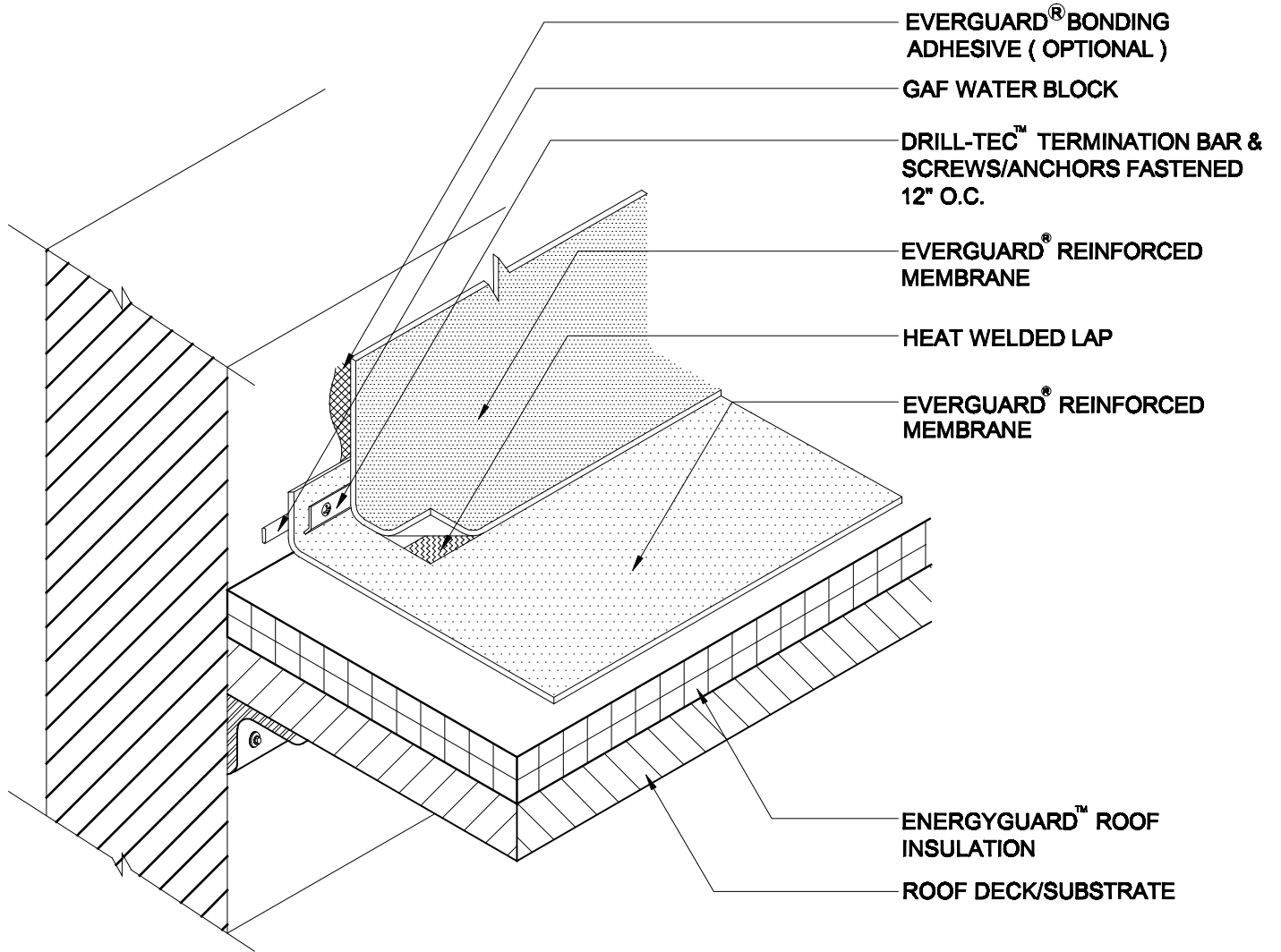
EverGuard®
Alternate Wall Base Termination
MA/FA/BA 307

Diagram

Updated: 11/06



*Quality You Can Trust Since 1886...
From North America's Largest Roofing Manufacturer™*



NOTE:

1. SCREWS/ ANCHORS 6" O.C. REQ'D FOR BA SYSTEMS. (IF BA SYSTEM USED IN A HIGH PRESSURE SITUATION ATTACH BAR 6" O.C.).
2. PLATES & FASTENERS MAY BE USED IN LIEU OF TERM BAR IN NON-PRESSURIZED SITUATIONS.
3. THIS DETAIL CAN BE USED FOR PRESSURIZED SITUATIONS.



ALTERNATE WALL BASE TERMINATION

DRAWING #

MA/FA/BA 307

SCALE
N.T.S.

ISSUE/ REVISION DATE
11-01-06