

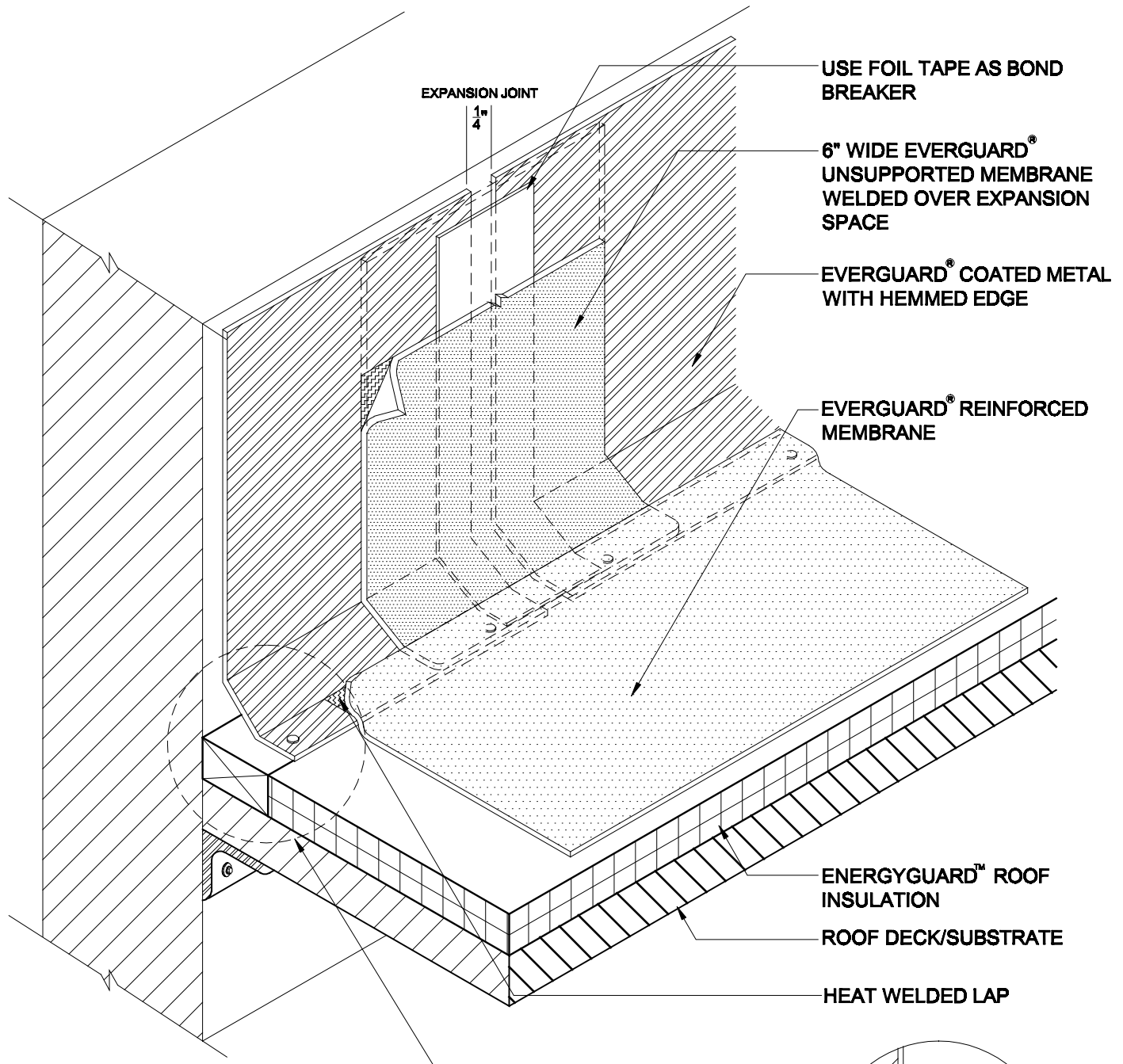
EverGuard®
Coated Metal Joint Detail
MA/FA/BA 310

Diagram

Updated: 11/06



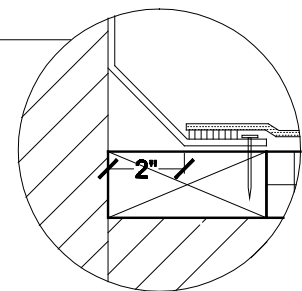
*Quality You Can Trust Since 1886...
From North America's Largest Roofing Manufacturer™*



NOTE:

1. DETAIL TO BE USED IN CONJUNCTION WITH STANDARD GUIDE SPECIFICATION CONTAINING REQUIREMENTS FOR NAILERS, INSULATION ETC.

2. APPLY EVERGUARD® TPO CUT EDGE SEALANT TO ALL CUT REINFORCED TPO EDGES (REFER TO DETAIL MA/FA/BA 115).



COATED METAL JOINT DETAIL

DRAWING #

MA/FA/BA 310

SCALE

N.T.S.

ISSUE/ REVISION DATE

11-01-06