

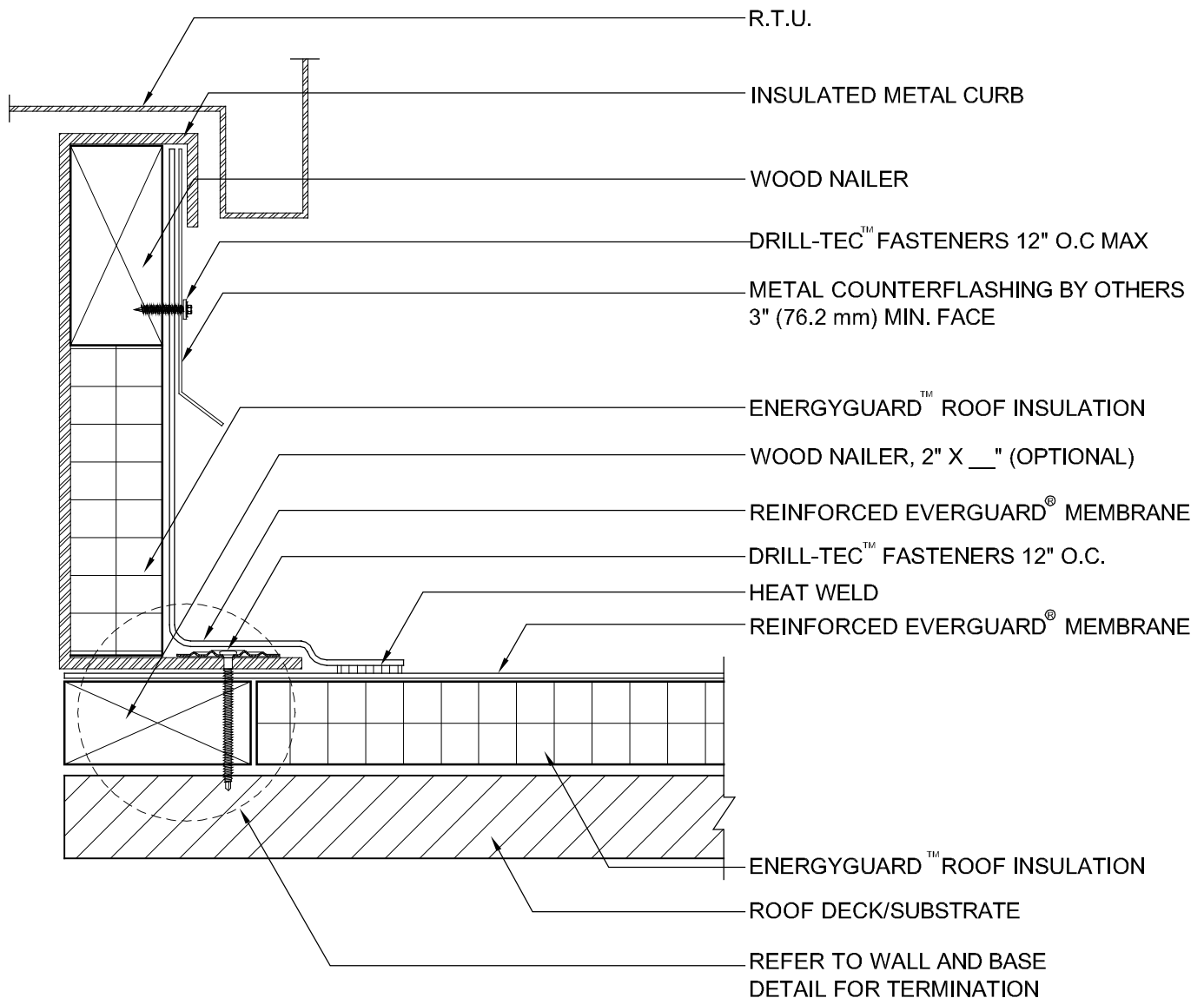
EverGuard®
Termination at RTU with Counterflashing
MA/FA/BA 503B

Diagram

Updated: 4/09



*Quality You Can Trust Since 1886...
From North America's Largest Roofing Manufacturer™*



NOTE:

1. METAL COUNTERFLASHING IS NOT REQ. IF MEMBRANE IS RUN UP AND OVER CURB WALLS PRIOR TO INSTALLATION OF R.T.U.
2. INSTALL METAL WORK IN ACCORDANCE WITH CURRENT SMACNA RECOMMENDATIONS.
3. PLATES & SCREWS 6" O.C. REQ'D FOR BA SYSTEMS.
4. APPLY EVERGUARD® TPO AND PVC CUT EDGE SEALANT TO ALL CUT REINFORCED TPO AND PVC EDGES (REFER TO DETAIL MA/FA/BA 115).



ROOF PENETRATION SERIES

TERMINATION AT R.T.U. WITH COUNTERFLASHING

DRAWING #

503B

SCALE

N.T.S.

SYSTEM

MA/FA/BA

ISSUE/ REVISION DATE

4-01-09