

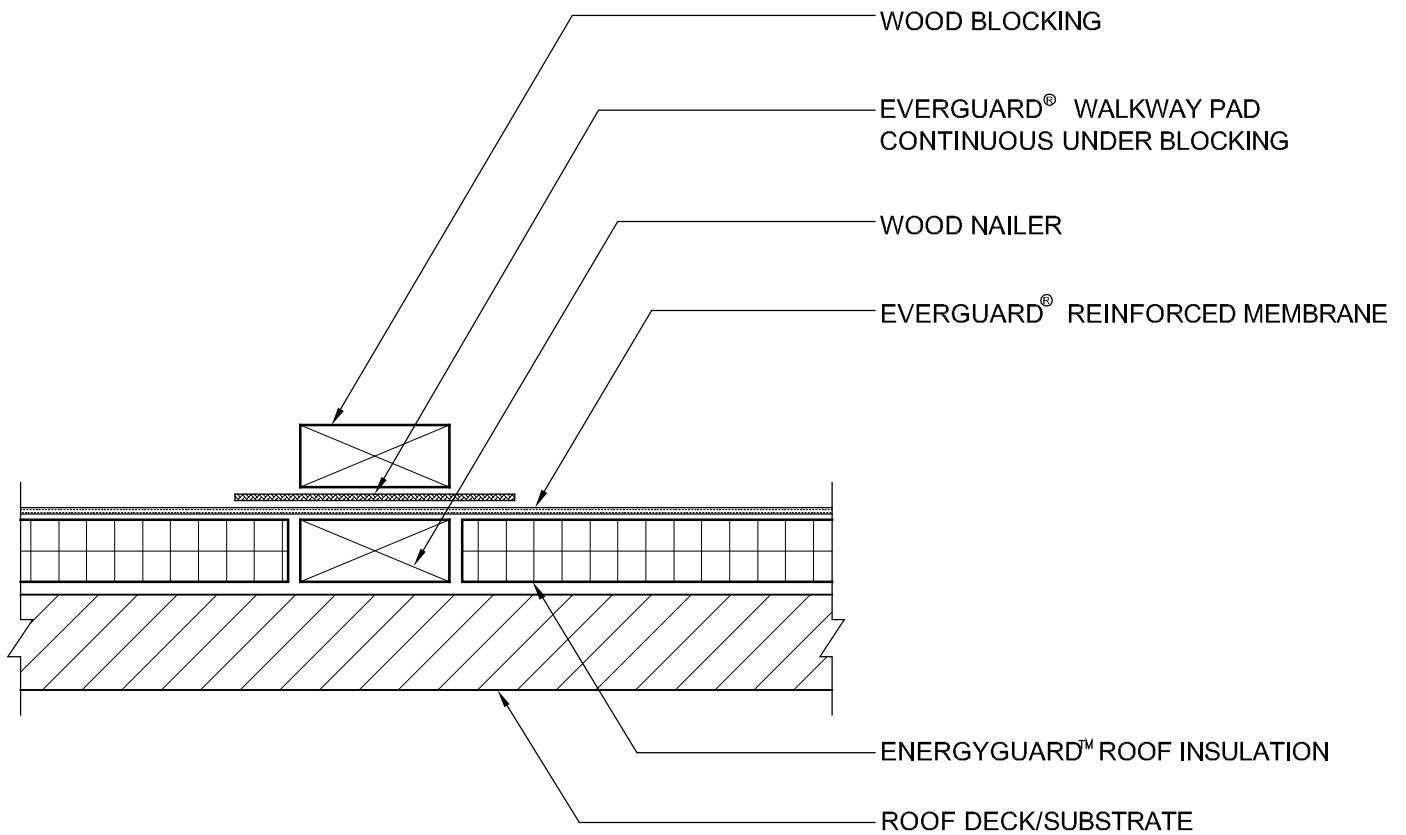
EverGuard®
Exposed Wood Equipment Support Sleeper
MA/FA/BA 511

Diagram

Updated: 4/09



*Quality You Can Trust Since 1886...
From North America's Largest Roofing Manufacturer™*



NOTE:

1. IF THE INSULATION COMPRESSIVE STRENGTH IS INSUFFICIENT FOR THE EQUIPMENT WEIGHT, INSTALL WOOD UNDER THE EQUIPMENT CARRYING SLEEPER, MATCHING THE HEIGHT OF THE INSULATION.



ROOF PENETRATION SERIES

EXPOSED WOOD EQUIPMENT SUPPORT SLEEPER

DRAWING #

511

SYSTEM

MA/FA/BA

SCALE

N.T.S.

ISSUE/ REVISION DATE

4-01-09