

EverGuard®  
Adhered Looped Lightning  
Suppression Mounting  
MA/FA/BA 605

Diagram

Updated: 11/06

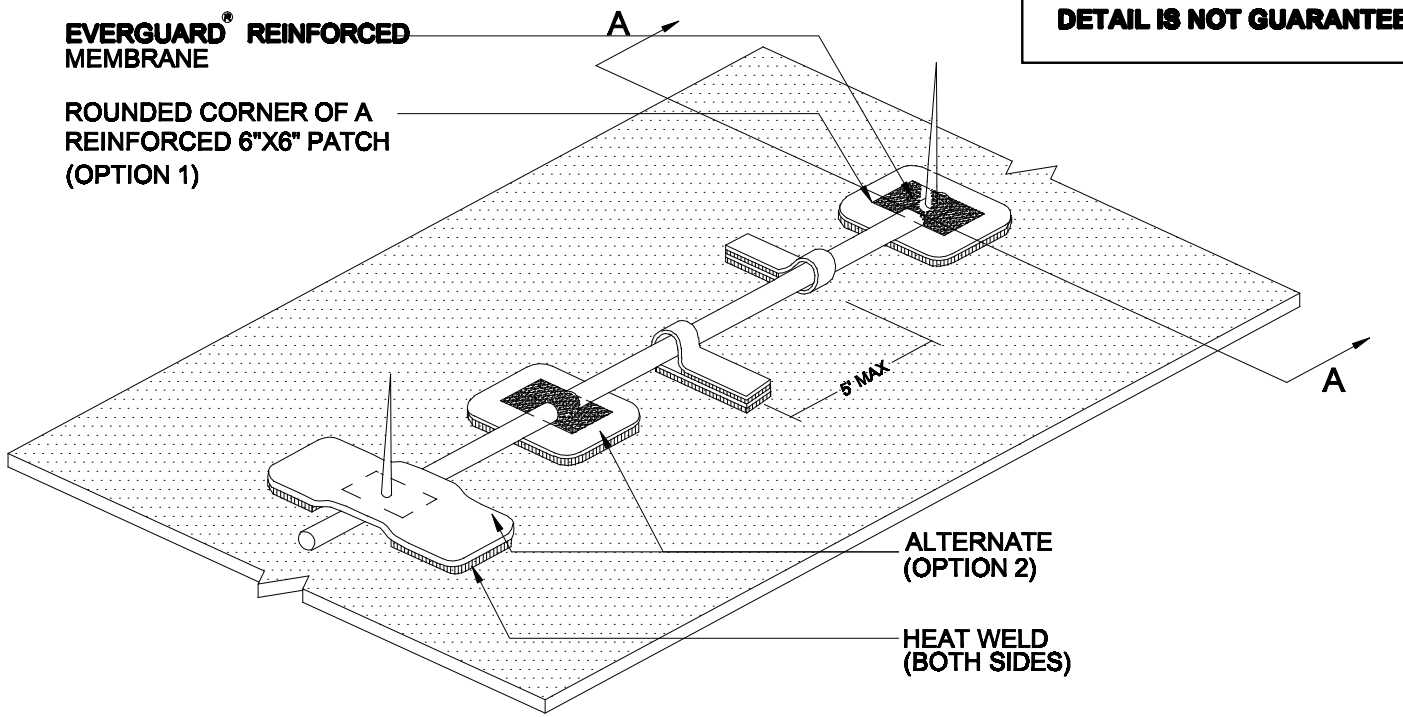


*Quality You Can Trust Since 1886...  
From North America's Largest Roofing Manufacturer™*

**EVERGUARD® REINFORCED MEMBRANE**

**ROUNDED CORNER OF A REINFORCED 6"X6" PATCH (OPTION 1)**

**DETAIL IS NOT GUARANTEED**



**ALTERNATE (OPTION 2)**

**HEAT WELD (BOTH SIDES)**

**LIGHTNING ROD**

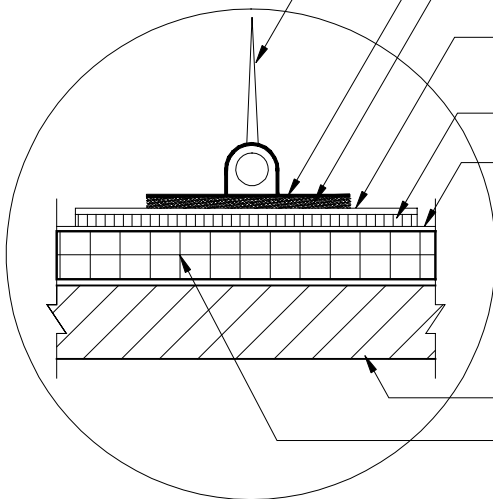
**CABLE LINE/LIGHTNING ROD BASE**

**EVERGUARD® CAULKING**

**EVERGUARD REINFORCED MEMBRANE 6"X6" PATCH**

**HEAT WELD**

**EVERGUARD REINFORCED MEMBRANE**



**SECTION A**

**NOTE:**

1. FOR OPTION 1: WHEN ATTACHING METAL PLATE TO 6"X6" PATCH, PRIME THE PATCH AT THE EVERGUARD® GUN GRADE CAULKING TO THE EVERGUARD TPO PRIMER AND EMBED THE PLATE INTO THE CAULK.

2. APPLY EVERGUARD® TPO CUT EDGE SEALANT TO ALL CUT REINFORCED TPO EDGES ( REFER TO DETAIL FD 115).



**ADHERED LOOPED LIGHTNING SUPPRESSION MOUNTING**

DRAWING #

**MA/FA/BA 605**

SCALE  
N.T.S.

ISSUE/ REVISION DATE  
11-01-06