

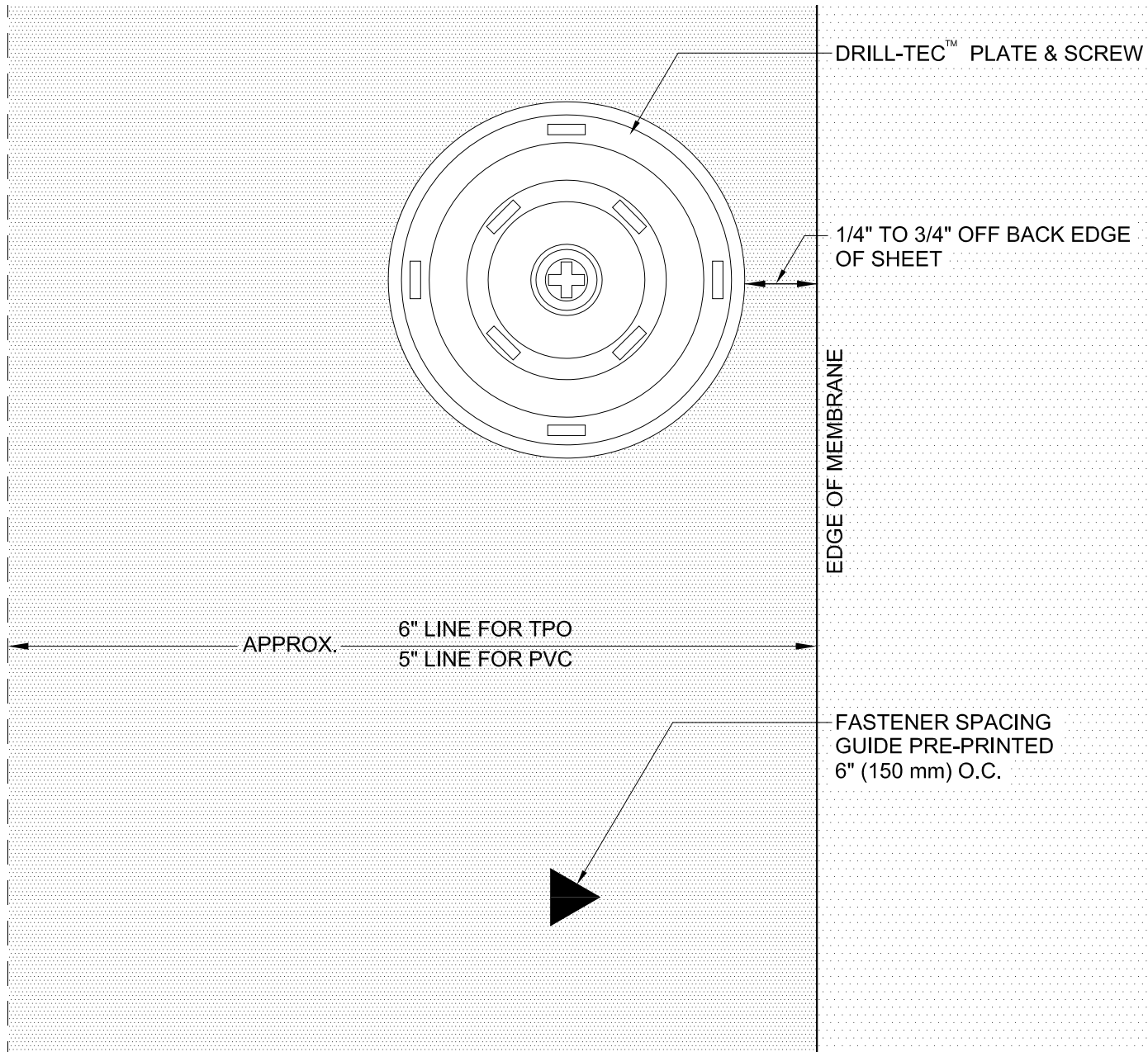
EverGuard®
Plate and Fastener Placement
MA 116

Diagram

Updated: 7/07



*Quality You Can Trust Since 1886...
From North America's Largest Roofing Manufacturer™*



NOTE:

1. FOR HEAT WELDING LAPS USE 1 1/2" WELD WITH AUTOMATIC MACHINE WELDER.
2. FOR INSULATION THICKNESS GREATER THAN 8" CONTACT GAFMC CONTRACTOR SERVICES FOR ALTERNATE MEMBRANE ATTACHMENT REQUIREMENTS.
3. APPLY EVERGUARD® TPO CUT EDGE SEALANT TO ALL CUT REINFORCED TPO EDGES (REFER TO DETAIL MA/FA/BA 115).