

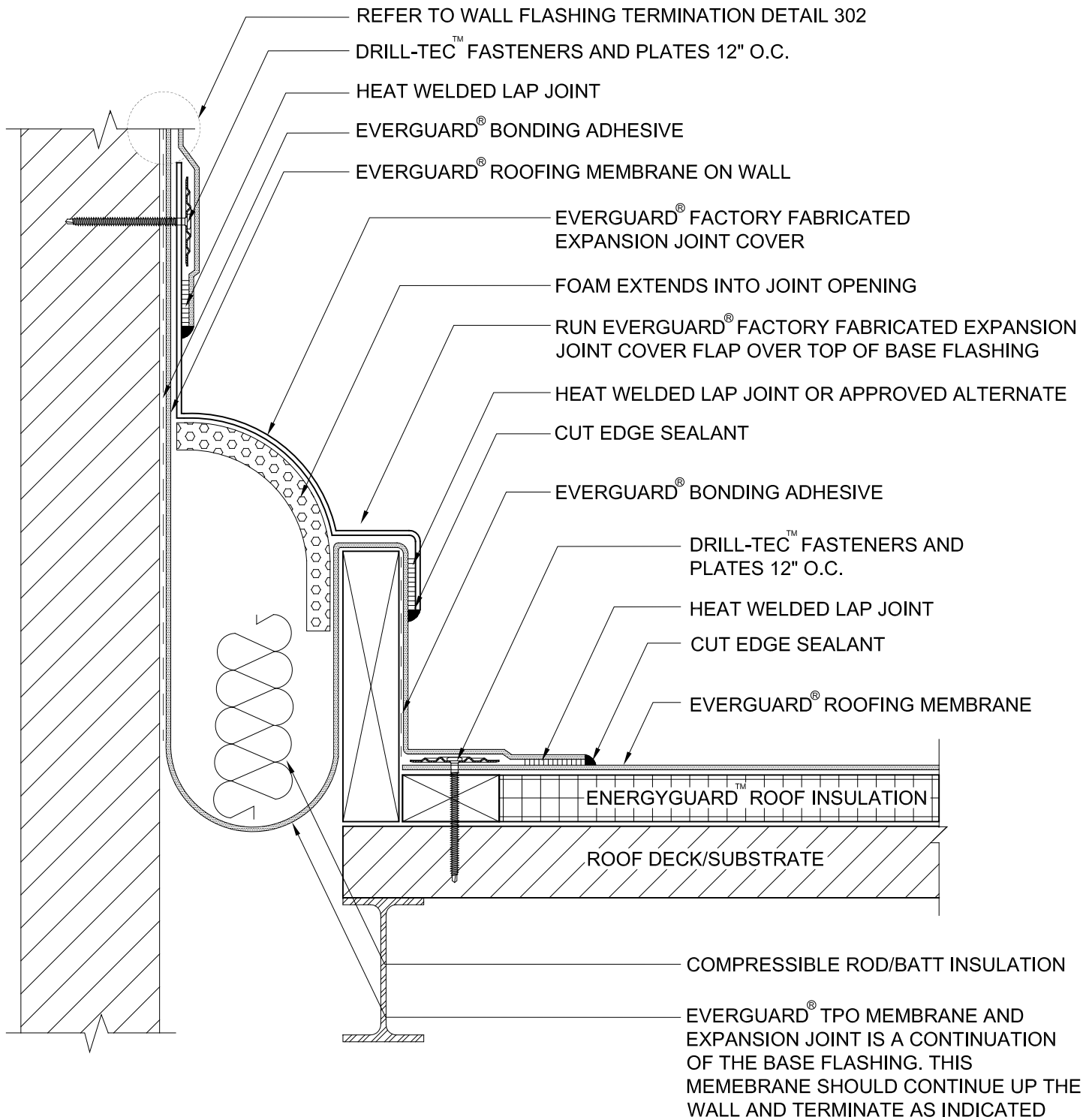
EverGuard®  
Factory Fabricated Wall Expansion  
Joint Detail - Curb Type  
MA/FA/BA 404A

Diagram

Updated: 8/07



*Quality You Can Trust Since 1886...  
From North America's Largest Roofing Manufacturer™*



**NOTE:**

1. APPLY EVERGUARD® TPO CUT EDGE SEALANT TO ALL CUT REINFORCED TPO EDGES ( REFER TO DETAIL MA/FA/BA 115 ).



**FACTORY FABRICATED WALL  
EXPANSION JOINT DETAIL -CURB TYPE**

TPO ONLY

DRAWING #

**MA/FA/BA 404A**

SCALE

N.T.S.

ISSUE/ REVISION DATE

8-01-07