

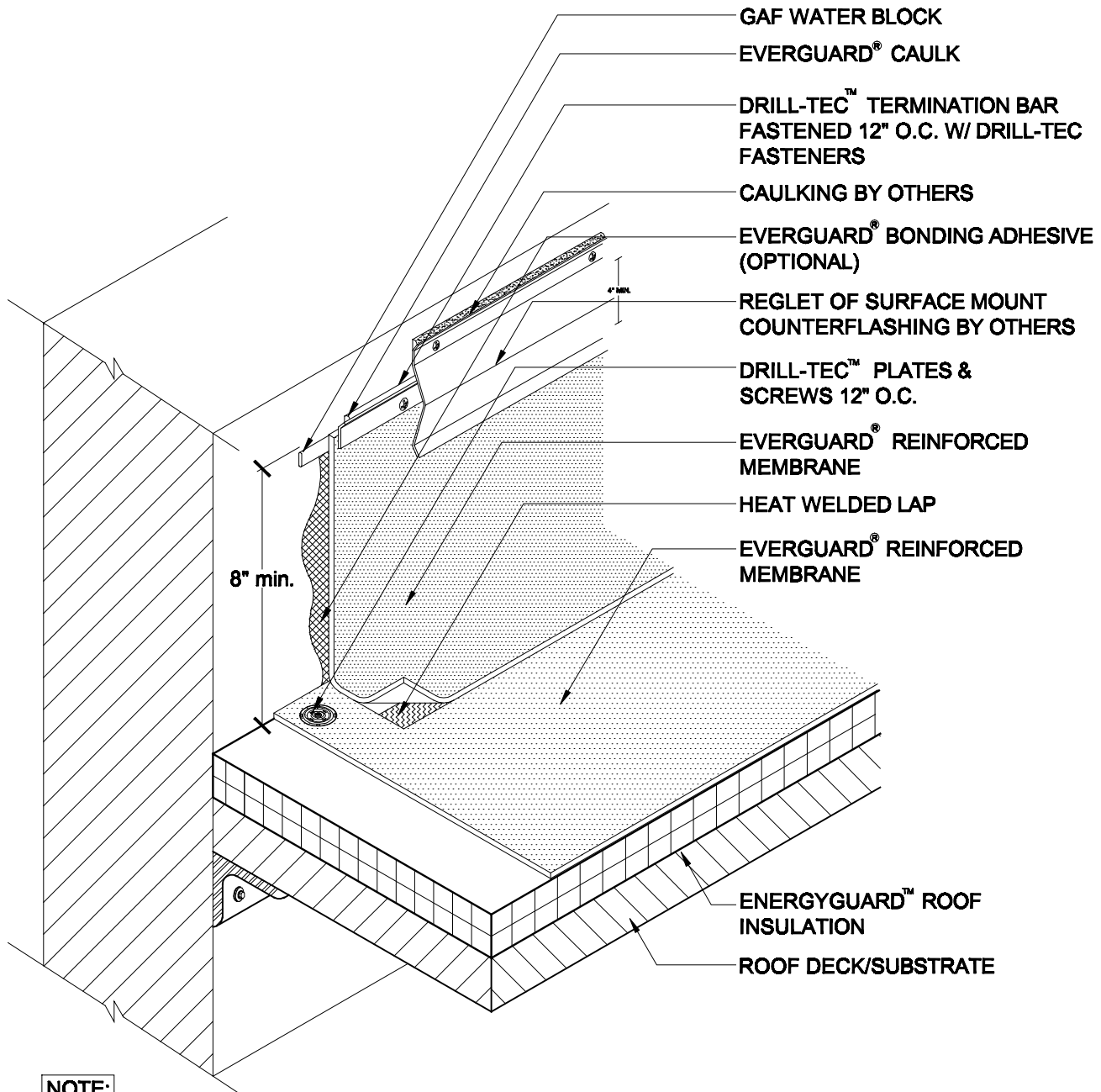
EverGuard®  
Parapet Wall Flashing  
With Counterflashing  
MA/FA/BA 301

Diagram

Updated: 11/06



*Quality You Can Trust Since 1886...  
From North America's Largest Roofing Manufacturer™*



**NOTE:**

1. EXISTING REGLET IS ACCEPTABLE IF METAL IS IN GOOD CONDITION.
2. FOR INSULATION THICKNESS GREATER THAN 8", CONTACT GAFMC CONTRACTOR SERVICES FOR ALTERNATE MEMBRANE ATTACHMENT REQUIREMENTS.
3. PLATES & SCREWS 6" O.C. REQ'D FOR BA SYSTEMS.
4. COUNTERFLASHING REQUIRED FOR 20 YEAR SYSTEM.
5. APPLY EVERGUARD® TPO CUT EDGE SEALANT TO ALL CUT REINFORCED TPO EDGES ( REFER TO DETAIL MA/BA/FA 115 ).



**PARAPET WALL FLASHING WITH  
COUNTERFLASHING**

DRAWING #

**MA/FA/BA 301**

SCALE  
N.T.S.

ISSUE/ REVISION DATE  
11-01-06