

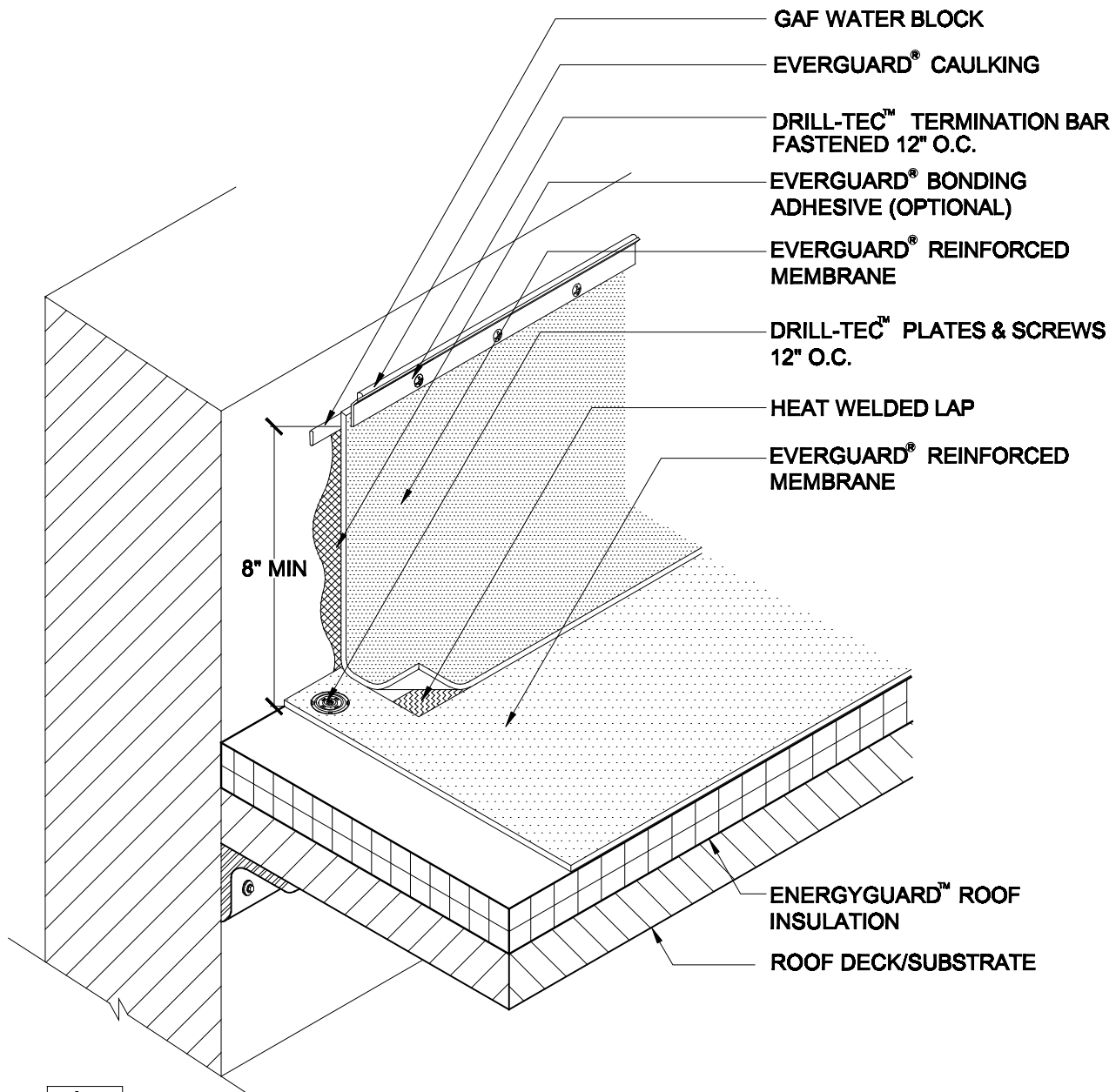
EverGuard®  
Wall Flashing With  
Termination Bar  
MA/FA/BA 320

Diagram

Updated: 11/06



*Quality You Can Trust Since 1886...  
From North America's Largest Roofing Manufacturer™*



**NOTE:**

1. STONE/PAVER BALLAST (NOT SHOWN) REQ'D FOR BA SYSTEMS.
2. FOR INSULATION THICKNESS GREATER THAN 8" CONTACT GAFMC CONTRACTOR SERVICES FOR ALTERNATE MEMBRANE ATTACHMENT REQUIREMENTS.
3. ADD TOP EDGE TERMINATION IMMEDIATELY AFTER MEMBRANE INSTALLATION.
4. PLATES & SCREWS 6" O.C. REQ'D FOR BA SYSTEMS.
5. ADD EVERGUARD® TPO CUTEDGE SEALANT TO ALL CUT REINFORCED TPO EDGES ( REFER TO DETAIL MA/FA/BA 115 ).



**WALL FLASHING WITH  
TERMINATION BAR**

**15 YEAR MAX GUARANTEE**

DRAWING #

**MA/FA/BA 302**

SCALE  
N.T.S.

ISSUE/ REVISION DATE  
11-01-06