

EverGuard®  
Coated Metal Joint Detail  
MA/FA/BA 204

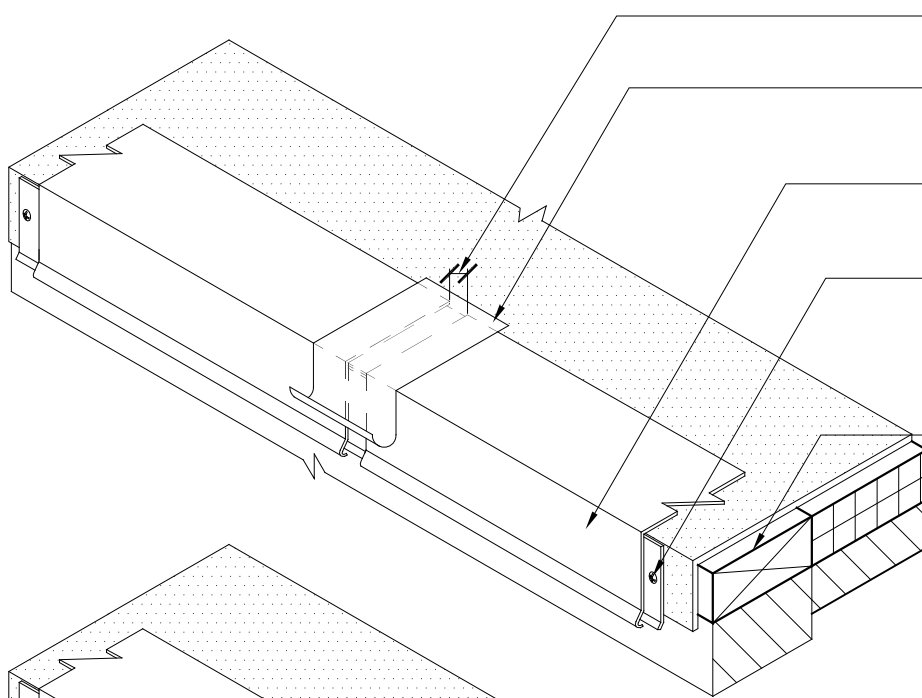
Diagram

Updated: 7/07



*Quality You Can Trust Since 1886...  
From North America's Largest Roofing Manufacturer™*

STEP 1.



1/4 " EXPANSION SPACE

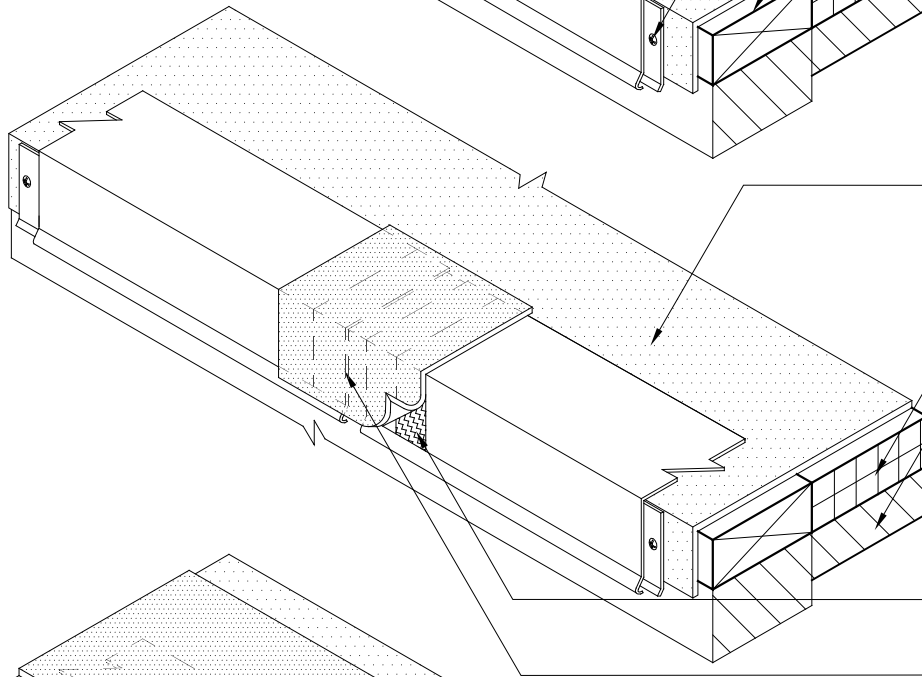
USE 2" FOIL TAPE AS BOND BREAKER

EVERGUARD® COATED METAL DRIP EDGE

24 GAUGE CONTINUOUS HOOK STRIP SECURED WITH DRILL-TEC™ FASTENERS @ 12" O.C.

WOOD NAILER MIN 2" x 2" SECURED TO DECK

STEP 2.

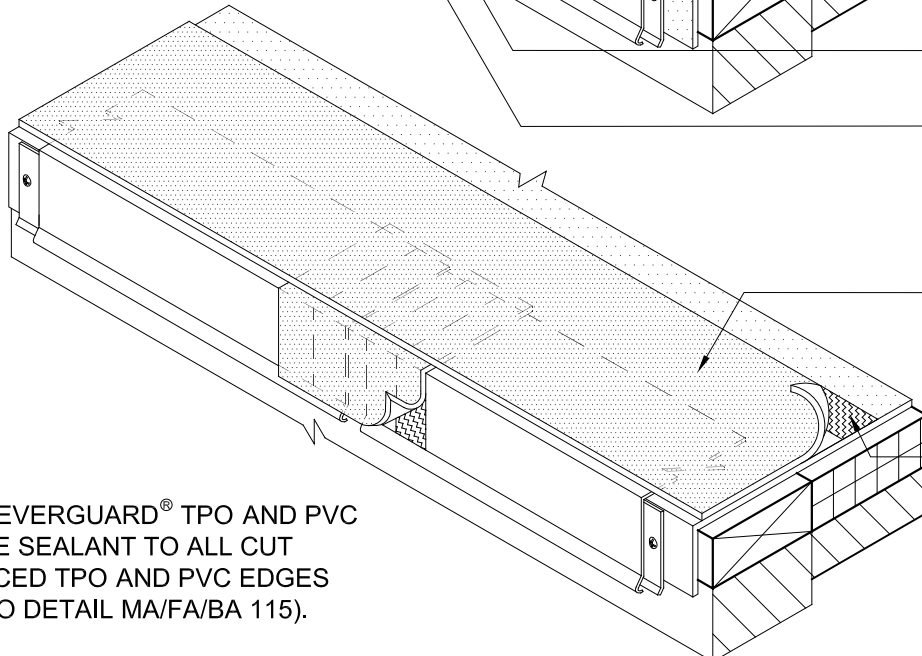


EVERGUARD® REINFORCED MEMBRANE

ENERGYGUARD™ ROOF INSULATION

ROOF DECK/SUBSTRATE

STEP 3.



HEAT WELDED LAP

6" WIDE EVERGUARD® UNREINFORCED MEMBRANE WELDED OVER EXPANSION SPACE

EVERGUARD® 6" WIDE MEMBRANE FLASHING STRIP

HEAT WELDED LAP

NOTE:

1. APPLY EVERGUARD® TPO AND PVC CUT EDGE SEALANT TO ALL CUT REINFORCED TPO AND PVC EDGES (REFER TO DETAIL MA/FA/BA 115).