

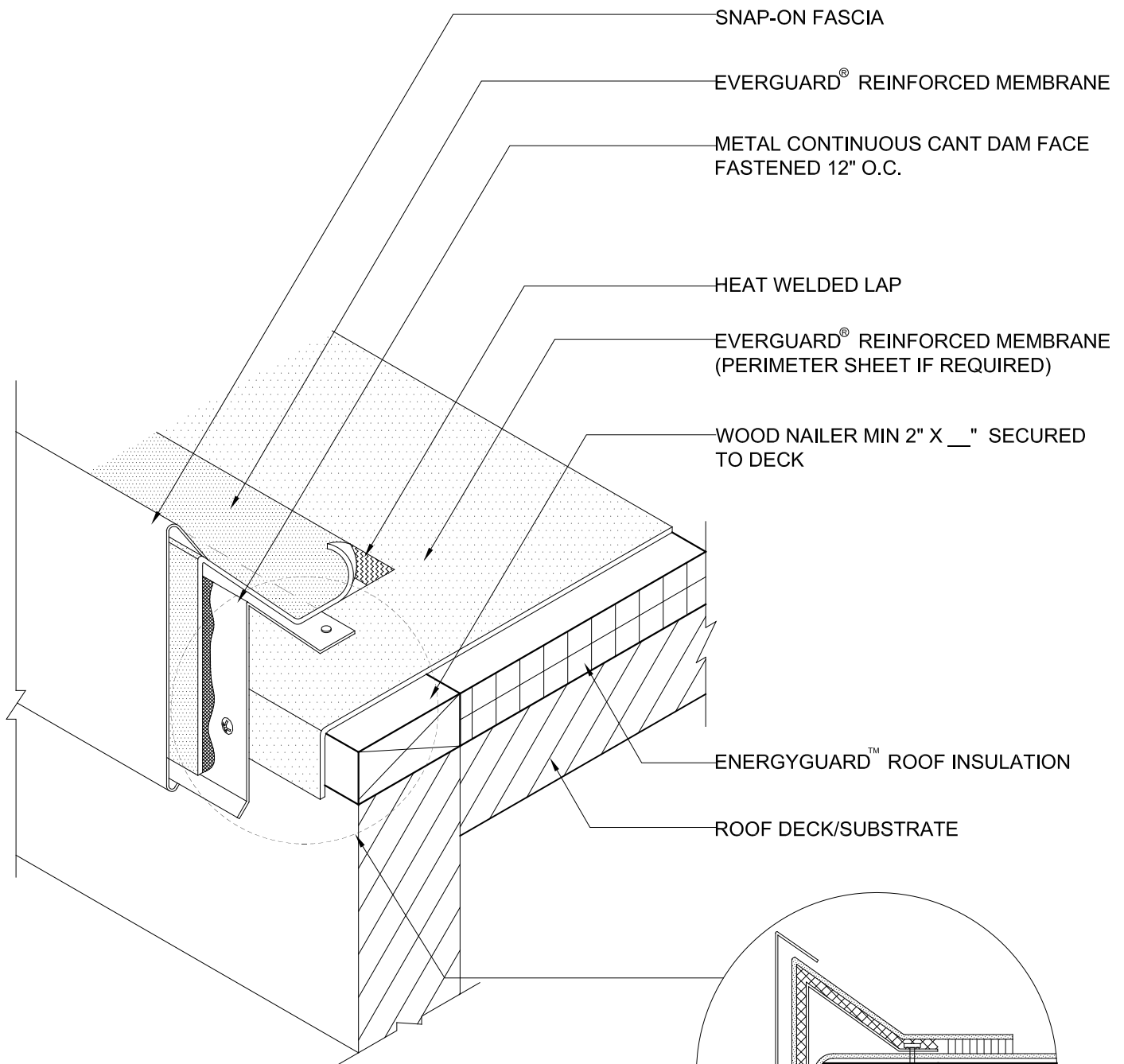
EverGuard®
Snap-On Fascia Roof Edge
MA/FA/BA 206

Diagram

Updated: 7/07



*Quality You Can Trust Since 1886...
From North America's Largest Roofing Manufacturer™*



SNAP-ON FASCIA

EVERGUARD® REINFORCED MEMBRANE

METAL CONTINUOUS CANT DAM FACE
FASTENED 12" O.C.

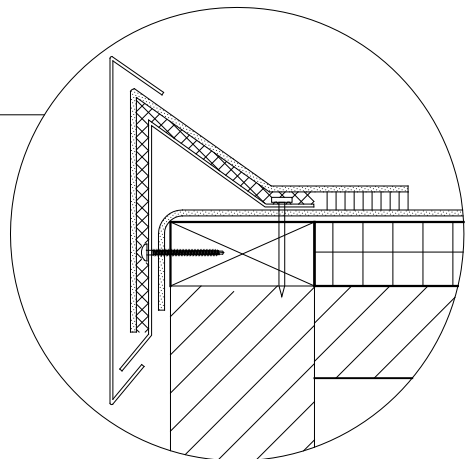
HEAT WELDED LAP

EVERGUARD® REINFORCED MEMBRANE
(PERIMETER SHEET IF REQUIRED)

WOOD NAILER MIN 2" X ___" SECURED
TO DECK

ENERGYGUARD™ ROOF INSULATION

ROOF DECK/SUBSTRATE



SECTION

NOTE:

1. ADD BALLAST PER SPEC FOR BA SYSTEMS.
2. APPLY EVERGUARD® TPO AND PVC CUT EDGE SEALANT TO ALL CUT REINFORCED TPO AND PVC EDGES (REFER TO DETAIL MA/FA/BA 115).



SNAP-ON FASCIA ROOF EDGE

DRAWING #
MA/FA/BA 206

SCALE	ISSUE/ REVISION DATE
N.T.S.	7-01-07