

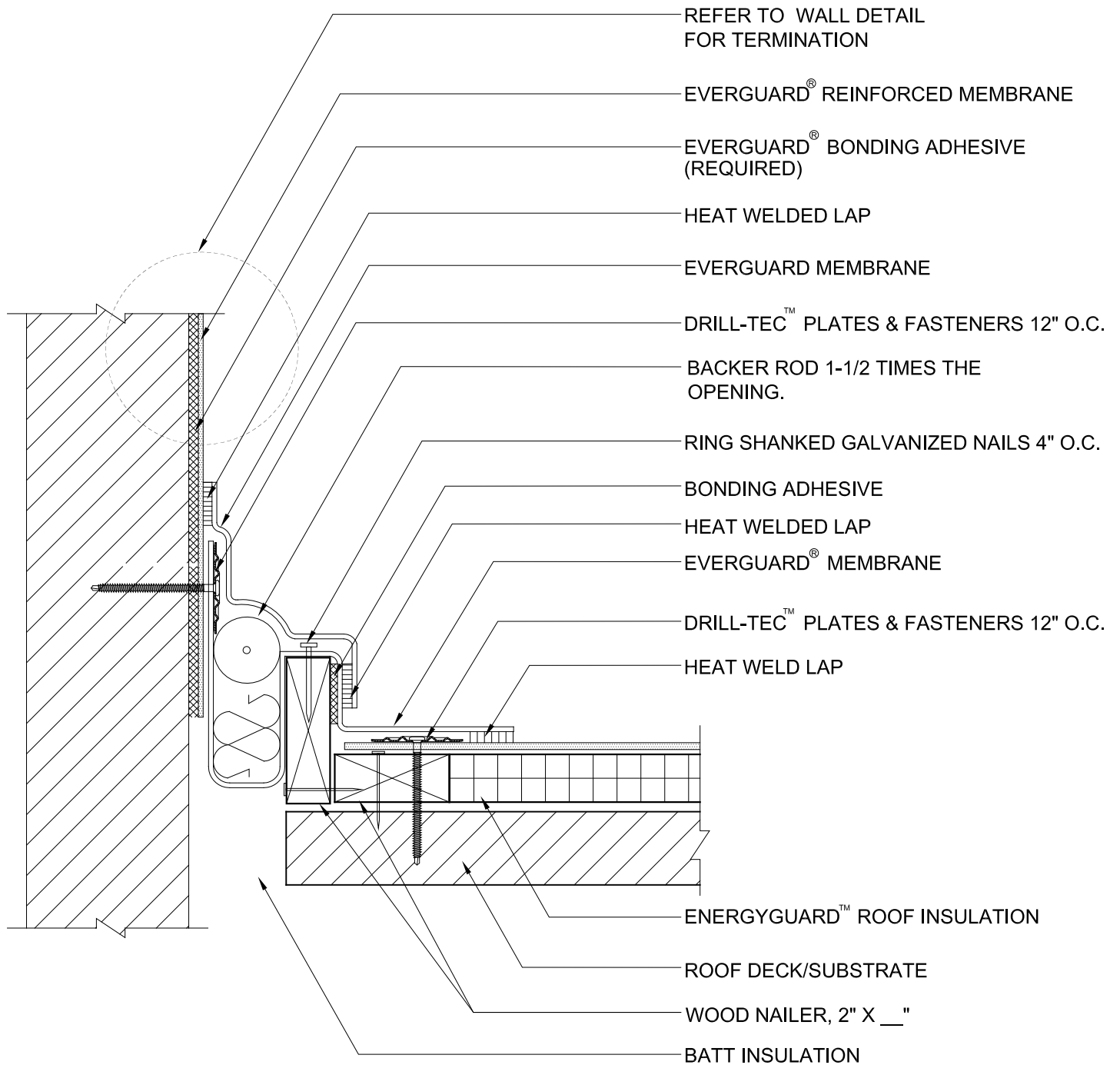
EverGuard®  
Field Fabricated Wall Expansion  
Joint - Curb Type  
MA/FA/BA 404B

Diagram

Updated: 6/09



*Quality You Can Trust Since 1886...  
From North America's Largest Roofing Manufacturer™*



**NOTE:**

1. FOR TPO AND PVC ADD CUT EDGE SEALANT TO ALL CUT EDGES.
2. ALL FLASHINGS MUST BE ADHERED WITH EVERGUARD TPO OR PVC BONDING ADHESIVE.