

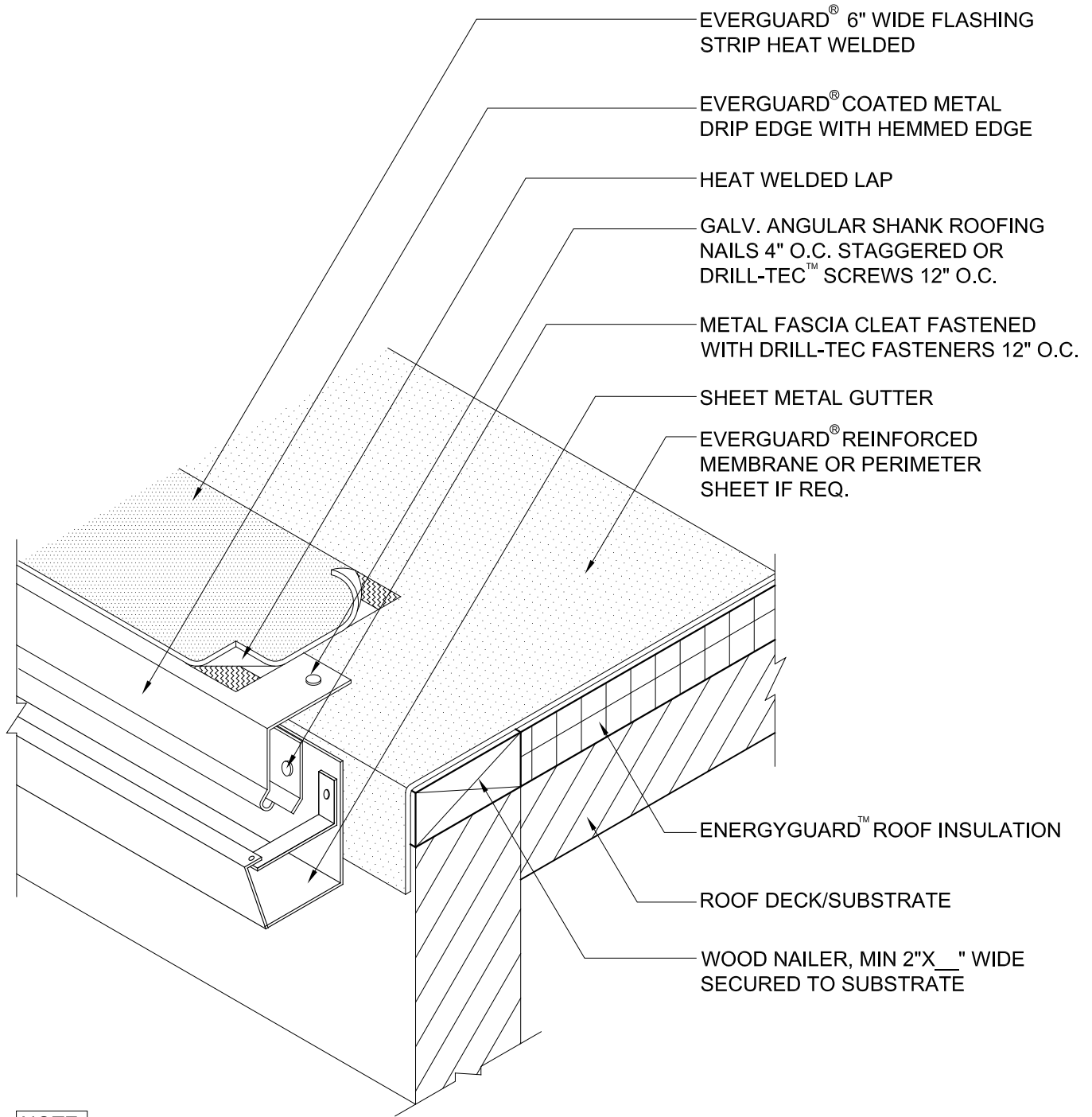
EverGuard®  
Gutter With Coated Metal Edge  
MA/FA 211

Diagram

Updated: 7/07



*Quality You Can Trust Since 1886...  
From North America's Largest Roofing Manufacturer™*



**NOTE:**

1. REFER TO DETAIL MA/FA/BA 204 FOR METAL JOINT DETAIL.
2. A CONTINUOUS METAL CLEAT IS REQUIRED.
3. APPLY EVERGUARD® TPO AND PVC CUT EDGE SEALANT TO ALL CUT REINFORCED TPO AND PVC EDGES (REFER TO DETAIL MA/FA/BA 115).