

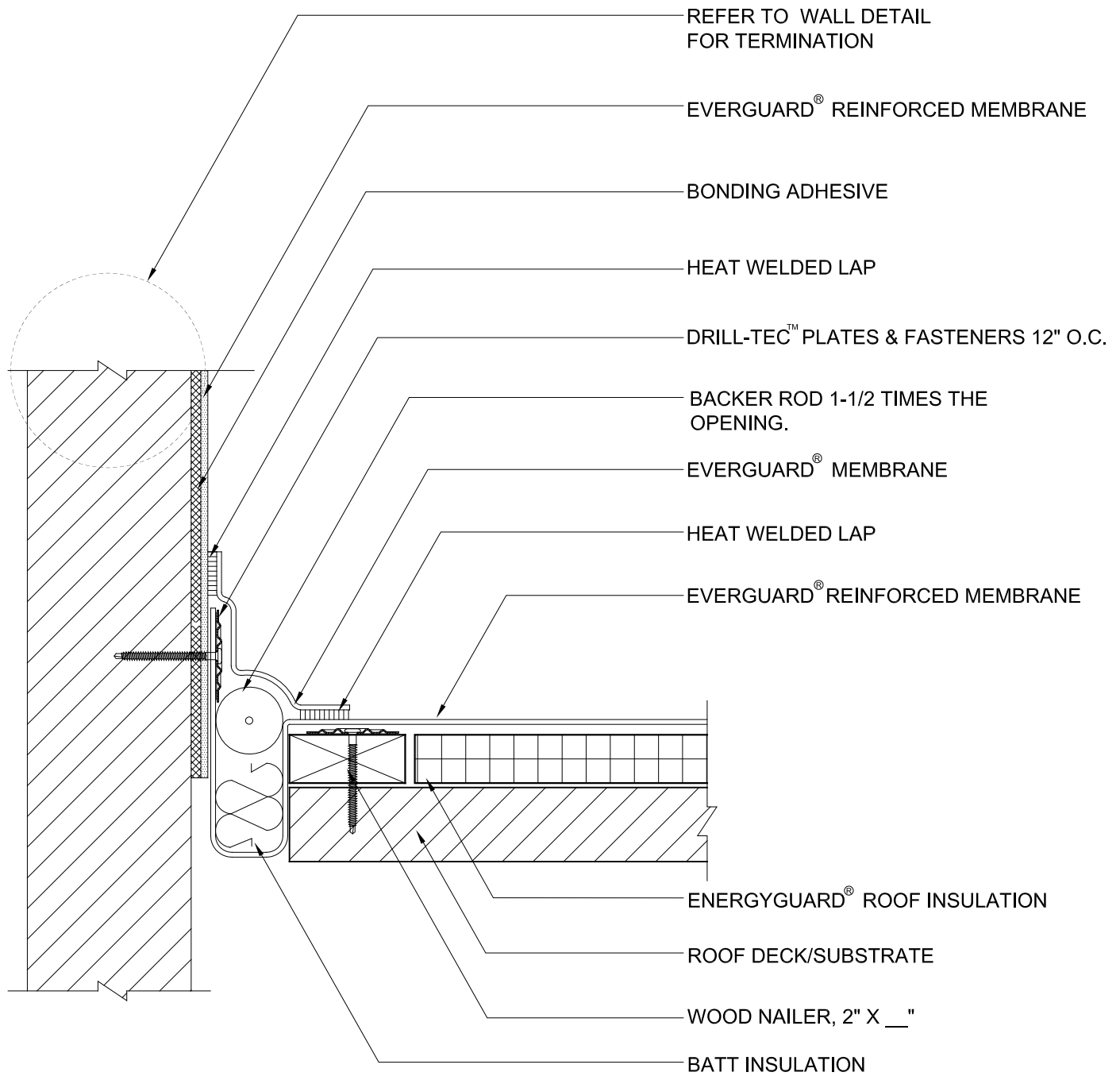
EverGuard®  
Field Fabricated Wall Expansion  
Joint Detail - Flat Type  
MA/FA/BA 403B

Diagram

Updated: 7/07



*Quality You Can Trust Since 1886...  
From North America's Largest Roofing Manufacturer™*



**NOTE:**

1. FIELD FABRICATED EXPANSION JOINT SHOULD NOT BE FLEECE-BACK OR SELF ADHERING MEMBRANE. USE STANDARD EVERGUARD MEMBRANE
2. APPLY EVERGUARD TPO AND PVC CUT EDGE SEALANT TO ALL CUT REINFORCED TPO AND PVC EDGES ( REFER TO DETAIL FD 115 ).



**FIELD FABRICATED WALL EXPANSION JOINT - FLAT TYPE**

DRAWING #

**MA/FA/BA 403B**

SCALE	ISSUE/ REVISION DATE
N.T.S.	7-01-07