

TriPosit®
High Wall Flashing
TRI 306

Diagram

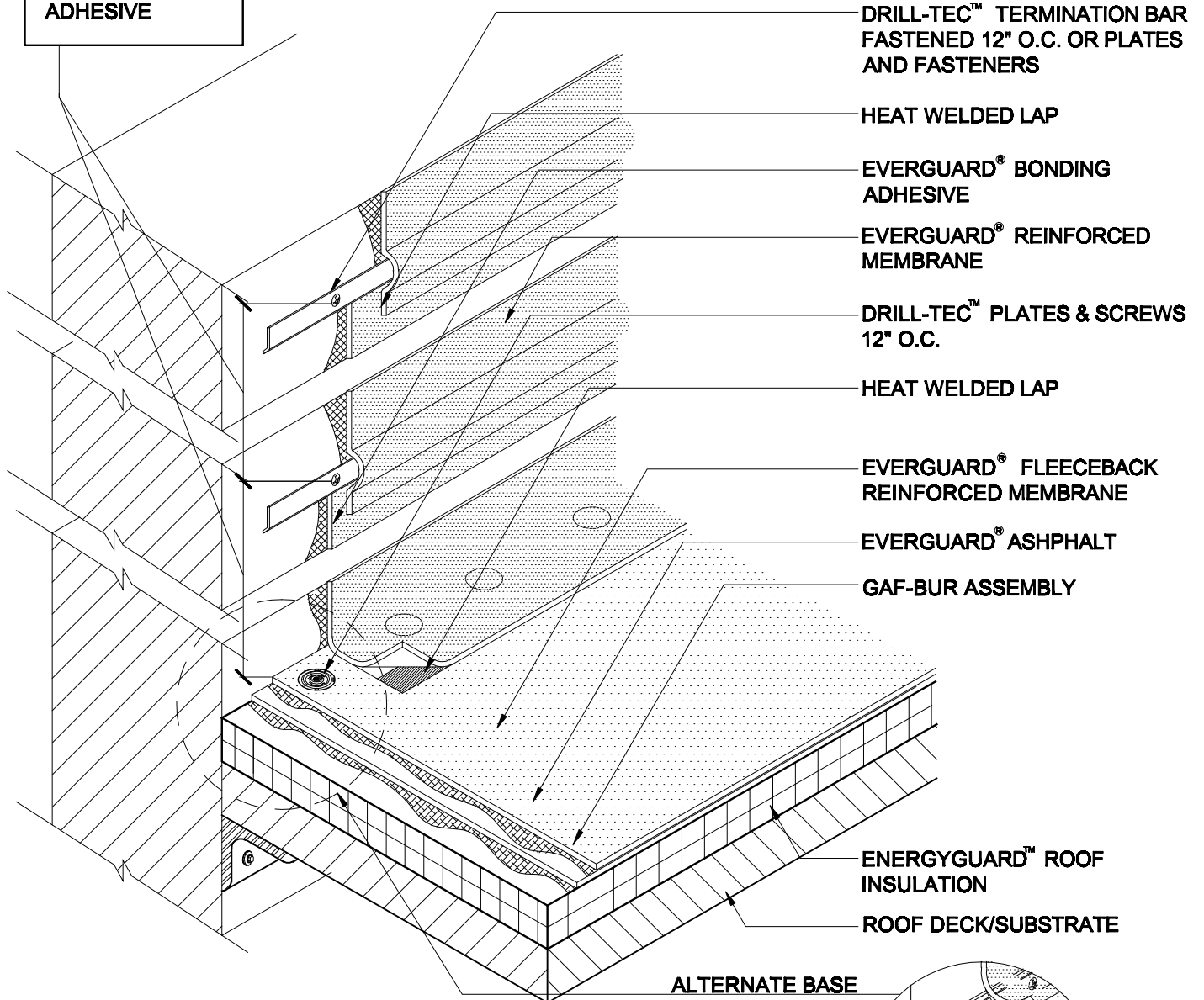
Updated: 11/06



*Quality You Can Trust Since 1886...
From North America's Largest Roofing Manufacturer™*

**INTERMITTENT
FASTENING KEY**

**54" WITH BONDING
ADHESIVE**



NOTE:

- 1. 54" MAX. DIMENSION FOR FULLY ADHERED FLASHINGS.**
- 2. FOR INSULATION THICKNESS GREATER THAN 8" CONTACT GAFMC CONTRACTOR SERVICES FOR ALTERNATE MEMBRANE ATTACHMENT REQUIREMENTS.**
- 3. APPLY EVERGUARD® TPO CUT EDGE SEALANT TO ALL CUT REINFORCED TPO EDGES (REFER TO DETAIL MA/FA/BA 115).**



HIGH WALL FLASHING

**DRAWING #
TRI 306**

| | |
|------------------------|---|
| SCALE N.T.S. | ISSUE/ REVISION DATE 11-01-06 |
|------------------------|---|