

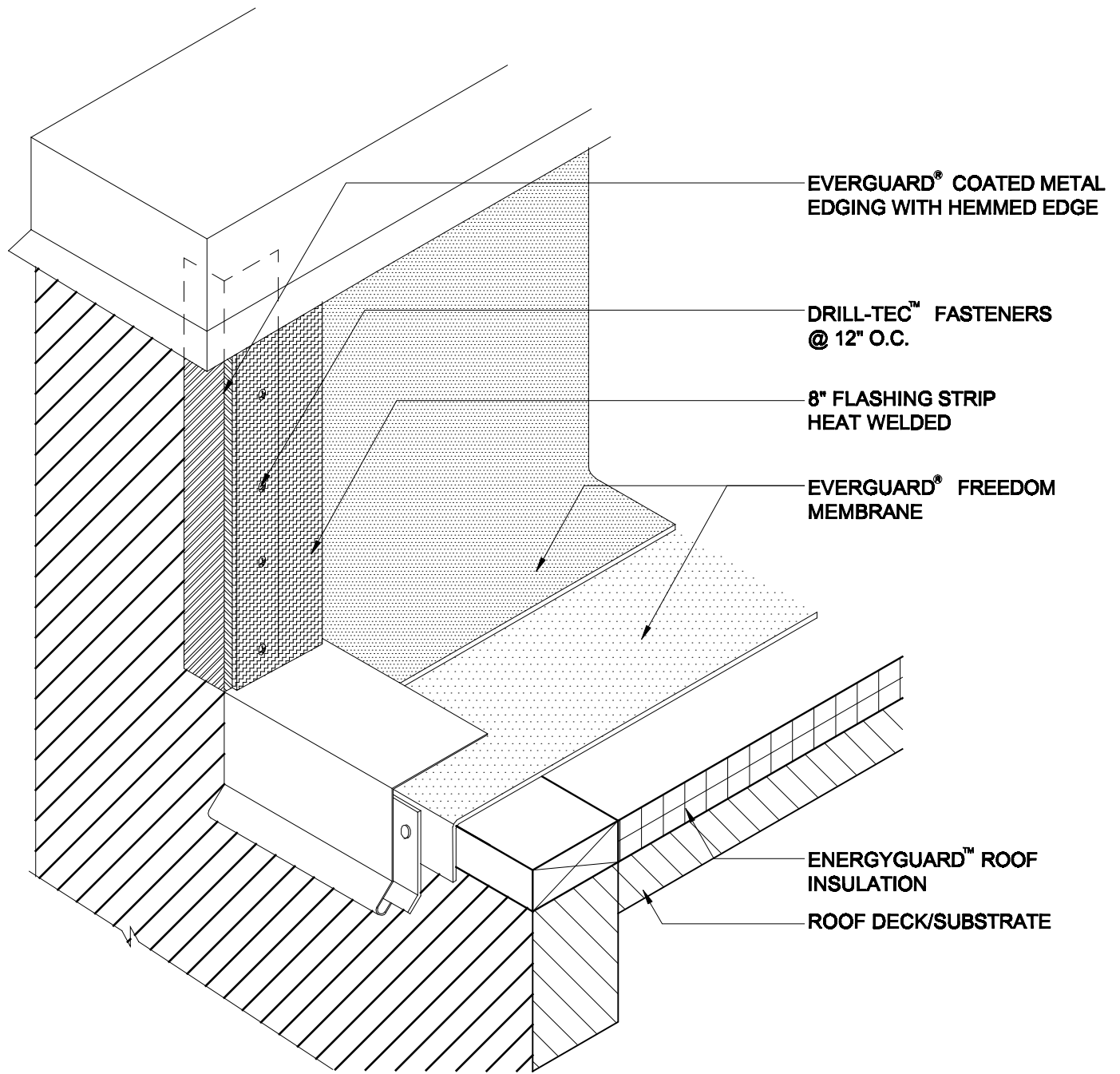
Freedom™
Wall Flashing With Coated Metal Edge
FD 314

Diagram

Updated: 11/06



*Quality You Can Trust Since 1886...
From North America's Largest Roofing Manufacturer™*



NOTE:

1. APPLY EVERGUARD® TPO CUT EDGE SEALANT TO ALL CUT REINFORCED TPO EDGES (REFER TO DETAIL FD 115).
2. TO MAKE A SEAM ON RS WITHOUT RS PRESENT, YOU MUST USE GAF CLEANER AS WELL AS GAF PRIMER TO PREP THE AREA.



WALL FLASHING WITH COATED METAL EDGE

FREEDOM HW ONLY

DRAWING #

FD 314

SCALE
N.T.S.

ISSUE/ REVISION DATE
11-01-06