

Freedom™
Expansion Joint - Curb Type
FD 402

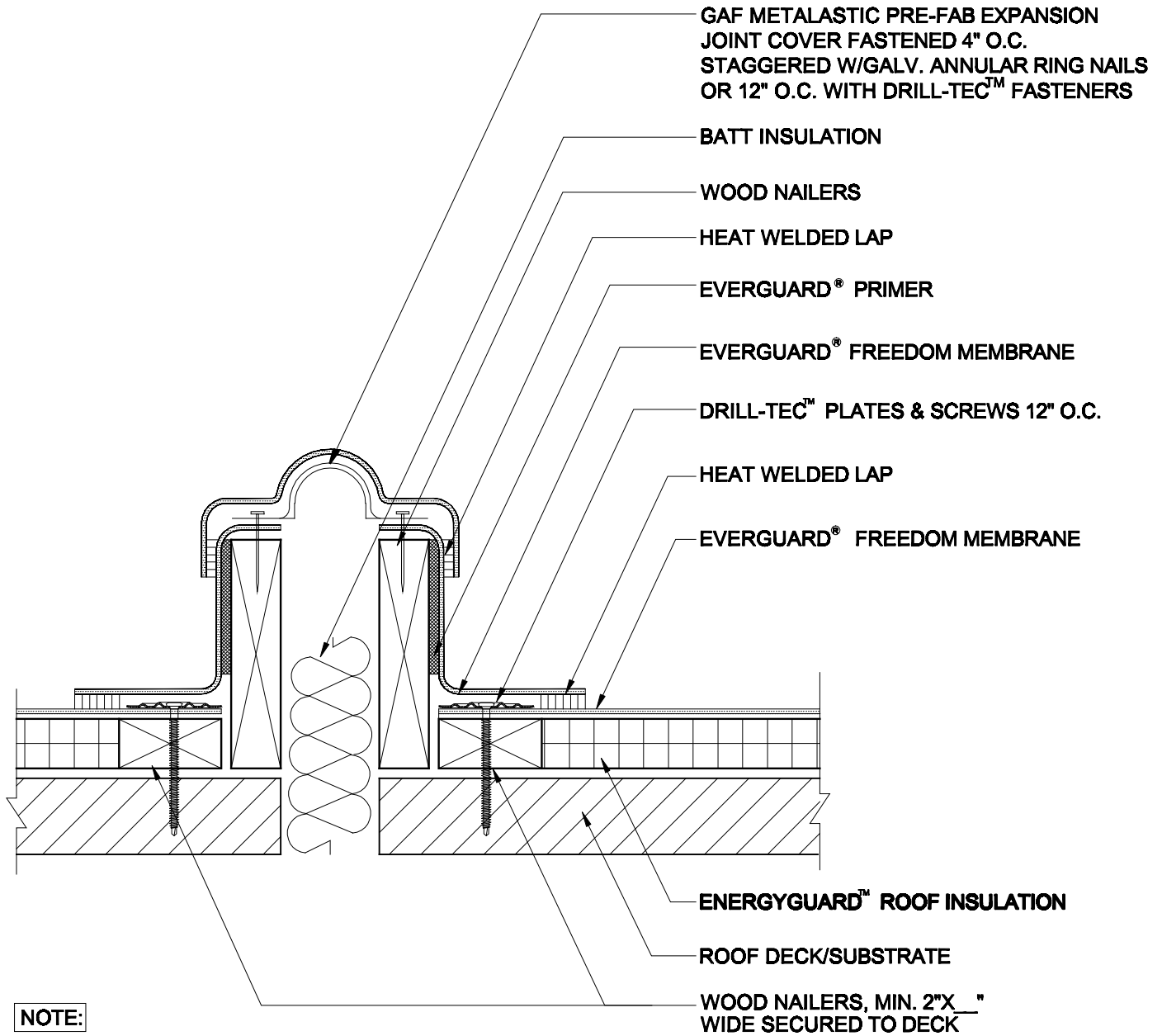
Diagram

Updated: 11/06



*Quality You Can Trust Since 1886...
From North America's Largest Roofing Manufacturer™*

RS MAX 10 YR WARRANTY



NOTE:

1. TO MAKE A SEAM ON RS WITHOUT RS PRESENT, YOU MUST USE GAF CLEANER AS WELL AS GAF PRIMER TO PREP THE AREA.
2. FOR TPO APPLICATIONS TAPE AND PRIMER SUPPLIED WITH THE EVERGUARD® EXPANSION JOINT MUST BE USED TO COMPLETE SEAMING OF THE VERTICAL SEAM. THIS DETAIL CAN ALSO BE FIELD FABRICATED WITH REINFORCED FIELD SHEET.
3. APPLY EVERGUARD® TPO CUT EDGE SEALANT TO ALL CUT REINFORCED TPO EDGES (REFER TO DETAIL FD 115) AND ALL RS SEAMS.



EXPANSION JOINT - CURB TYPE

FREEDOM RS & HW

DRAWING #

FD 402

SCALE
N.T.S.

ISSUE/ REVISION DATE
11-01-06