

Freedom™  
New Construction With Wall Cap  
FD 501

Diagram

Updated: 11/06



*Quality You Can Trust Since 1886...  
From North America's Largest Roofing Manufacturer™*

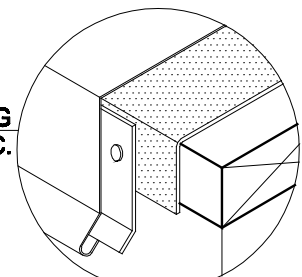
**RS MAX 10 YR WARRANTY**

**INTERMITTENT  
FASTENING KEY**

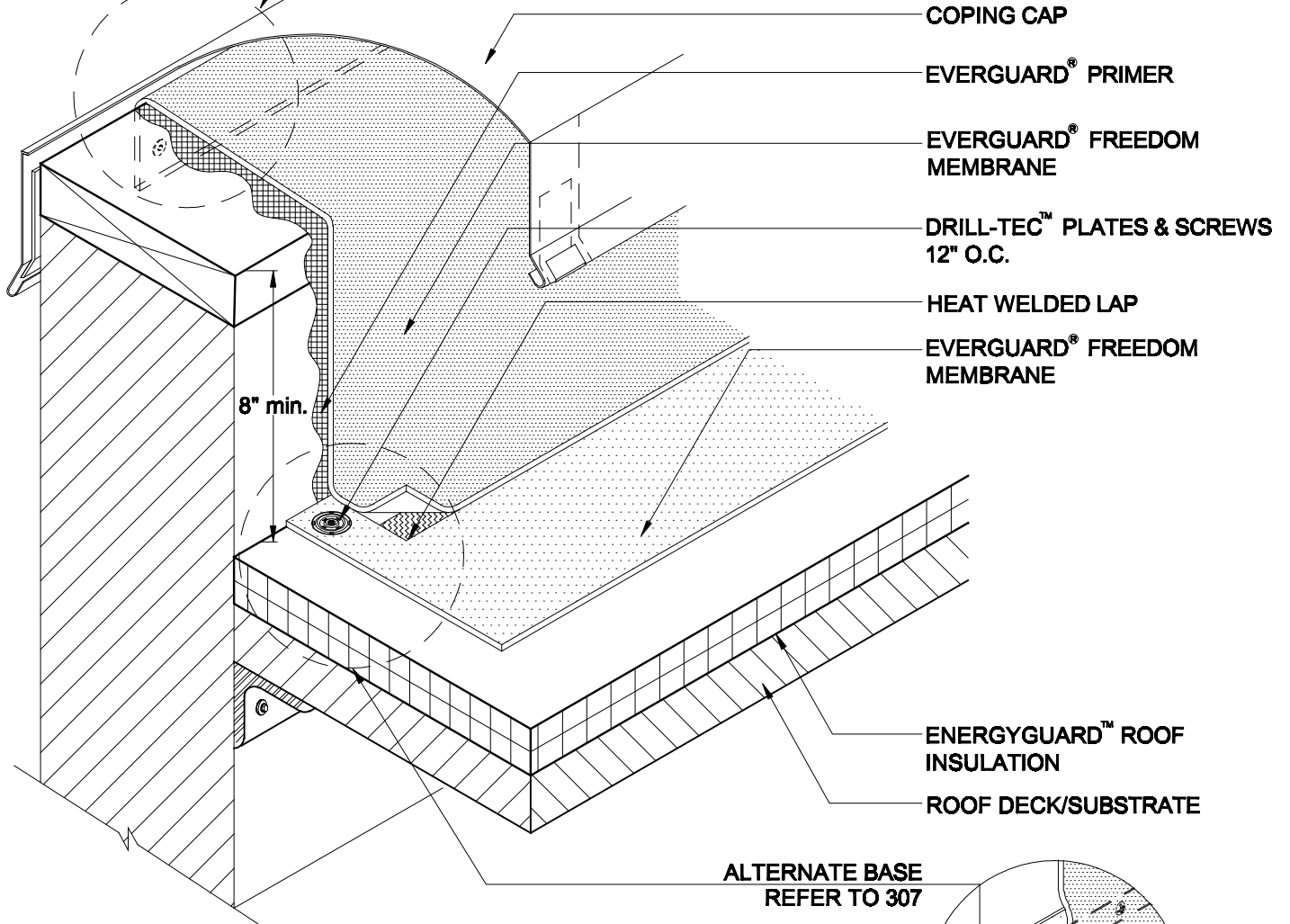
**54" WITH BONDING  
ADHESIVE**

**18" DRY**

**NAIL COPING  
12" O.C.**



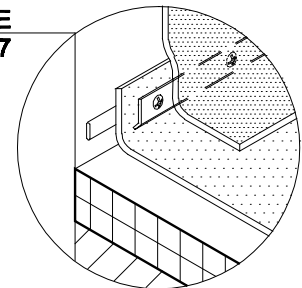
**BACK SIDE**



**NOTE:**

1. FOR INSULATION THICKNESS GREATER THAN 8" CONTACT GAFMC CONTRACTOR SERVICES FOR ALTERNATE MEMBRANE ATTACHMENT REQUIREMENTS.
2. TO MAKE A SEAM ON RS WITHOUT RS PRESENT, YOU MUST USE GAF CLEANER AS WELL AS GAF PRIMER TO PREP THE AREA.
3. APPLY EVERGUARD® TPO CUT EDGE SEALANT TO ALL CUT REINFORCED TPO EDGES ( REFER TO DETAIL FD 115 ) AND ALL RS SEAMS.

**ALTERNATE BASE  
REFER TO 307**



**NEW CONSTRUCTION WITH WALL CAP**

**FREEDOM RS & HW**

**DRAWING #**

**FD 501**

**SCALE**

**N.T.S.**

**ISSUE/ REVISION DATE**

**11-01-06**