

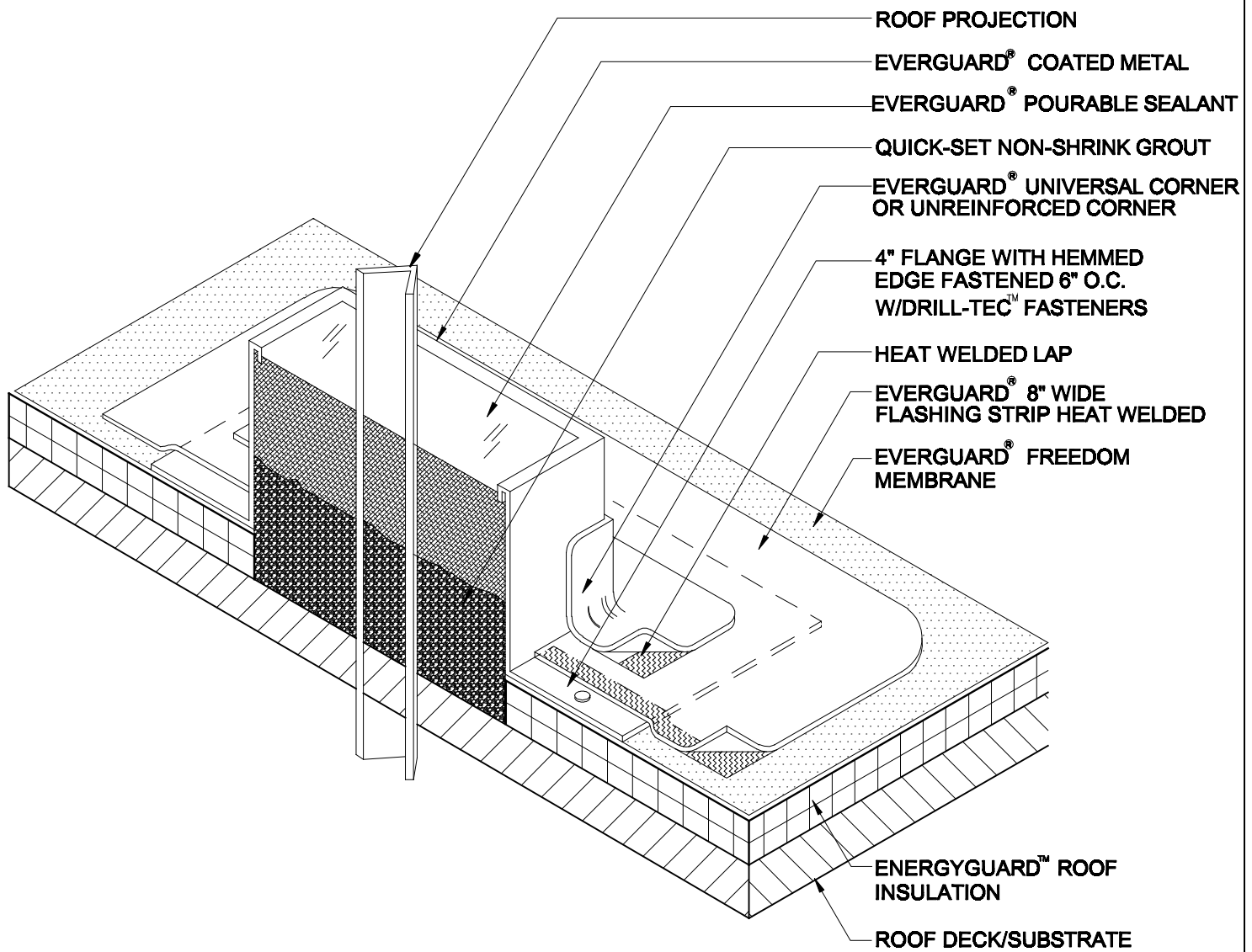
Freedom™
Coated Metal Sealant Box
Penetration Flashing
FD 509

Diagram

Updated: 11/06



*Quality You Can Trust Since 1886...
From North America's Largest Roofing Manufacturer™*



NOTE:

1. BEND EVERGUARD® COATED METAL TO FORM A SEALANT BOX AS SHOWN. STRIP IN VERTICAL SEAM WHERE BOX IS JOINED TOGETHER.
2. ALLOW 2" CLEARANCE AROUND THE PROJECTION. IF MULTIPLE PROJECTIONS, ALLOW 1" BETWEEN PROJECTION AND BOX.
3. INSIDE SURFACE OF EVERGUARD® COATED METAL SEALANT BOX (BARE METAL SIDE) MUST BE CLEAN AND DRY BEFORE SEALANT IS APPLIED.
4. EXISTING PROJECTION MUST BE CLEANED AND FREE OF ANY INSULATING MATERIALS .
5. PREFABRICATED HEAT WELDABLE TPO PIPE BOOTS MAY ALSO BE USED. CUT OFF STEPPED SECTIONS OF BOOT LEAVING LARGE BOTTOM OF BOOT INTACT. WELD FLANGE IN PLACE AND FILL WITH POURABLE SEALER TO TOP AND ADD STAINLESS STEEL BAND.
6. IF USING TPO BOOT, PRIME INSIDE OF BOOT.
7. APPLY EVERGUARD® TPO CUT EDGE SEALANT TO ALL CUT REINFORCED TPO EDGES (REFER TO DETAIL FD 115).



**COATED METAL SEALANT BOX
PENETRATION FLASHING**

FREEDOM HW ONLY

DRAWING #

FD 509

SCALE

N.T.S.

ISSUE/ REVISION DATE

11-01-06