

# Base Flashing For Non-Wall-Supported Deck MB/BUR 4

Diagram

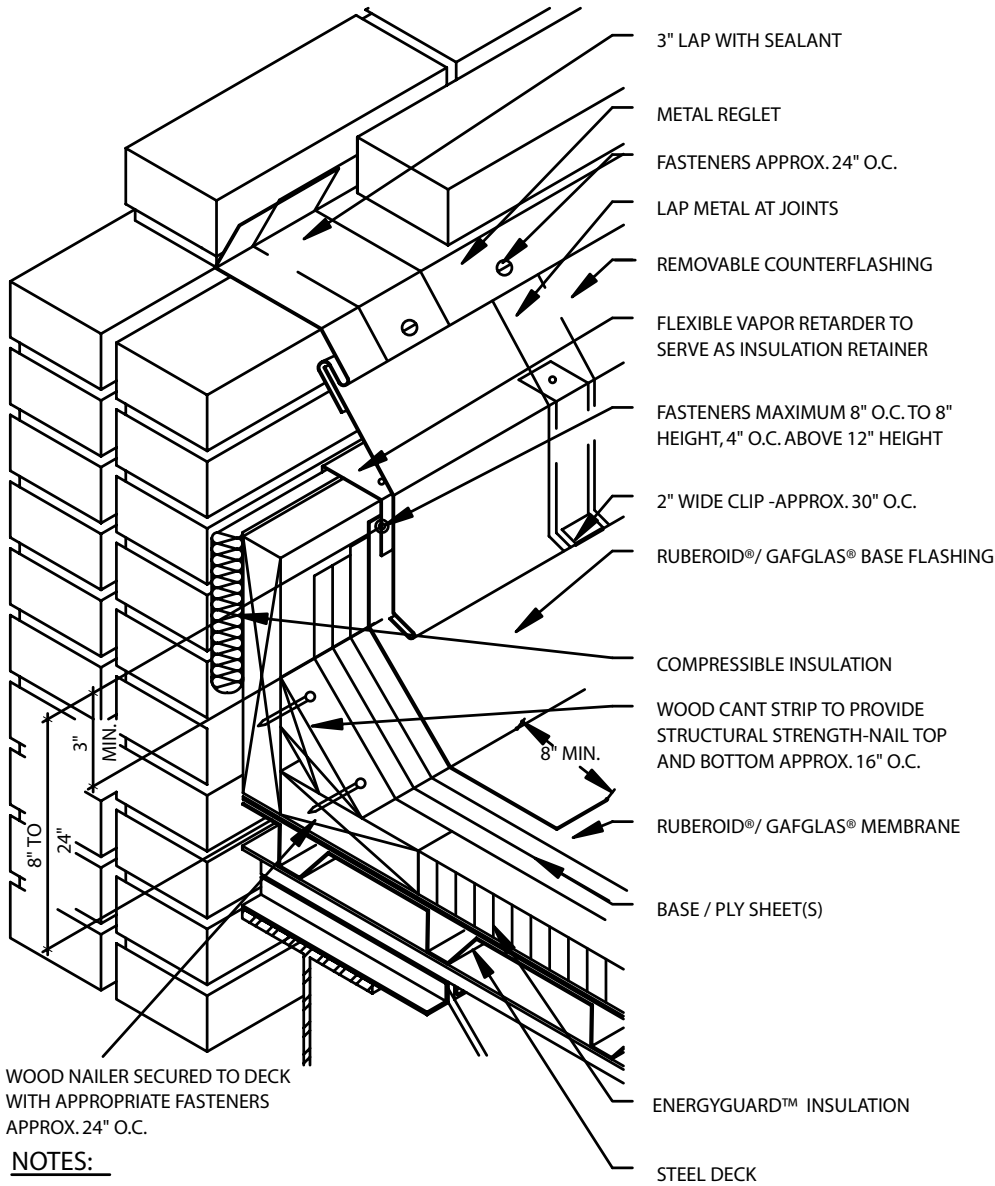


*Quality You Can Trust Since 1886...  
From North America's Largest Roofing Manufacturer™*

# MB 4/BUR 4 – BASE FLASHING FOR NON-WALL-SUPPORTED DECK



Flashing Details



**NOTES:**

1. THIS DETAIL ALLOWS WALL AND DECK TO MOVE INDEPENDENTLY.
2. THIS DETAIL SHOULD BE USED WHERE THERE IS ANY POSSIBILITY THAT DIFFERENTIAL MOVEMENT WILL OCCUR BETWEEN THE DECK AND A VERTICAL SURFACE, SUCH AS AT A PENTHOUSE WALL. THE VERTICAL WOOD MEMBER SHOULD BE FASTENED TO THE DECK ONLY. THIS IS ONE SATISFACTORY METHOD OF JOINING THE TWO PIECE FLASHING SYSTEM. OTHER METHODS MAY BE USED.
3. COUNTER FLASHING MUST EXTEND AT LEAST 3" BELOW BASE FLASHING FASTENERS.
4. BASE FLASHING ON ALL 15 & 20 YR. GUARANTEE SYSTEMS MUST HAVE A BASE PLY. REFER TO FLASHING MEMBRANES AND FLASHING SPECIFICATION PLATE SECTIONS.