

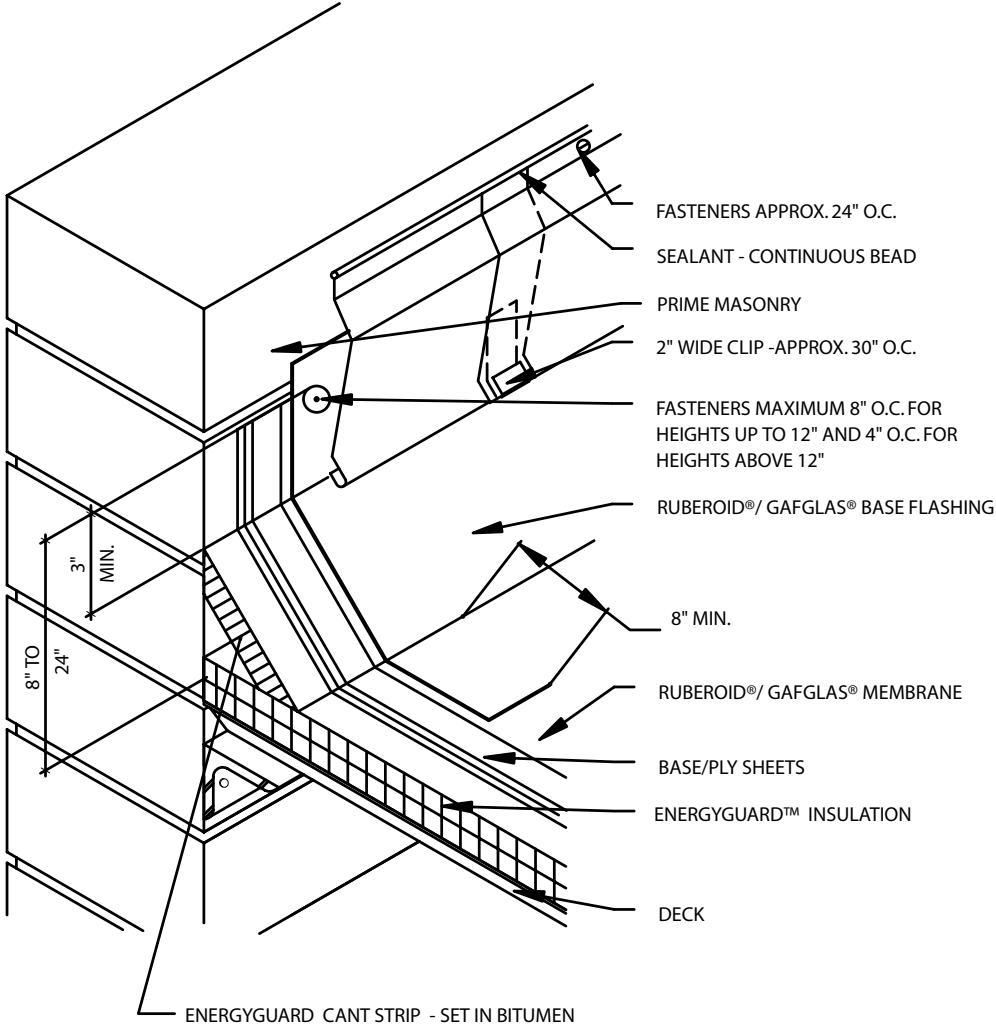
# Wall Flashing Detail With Surface-Mounted Counterflashing MB/BUR 5

Diagram



*Quality You Can Trust Since 1886...  
From North America's Largest Roofing Manufacturer™*

# MB 5/BUR 5 – WALL FLASHING DETAIL WITH SURFACE-MOUNTED COUNTERFLASHING



**NOTES:**

1. WHEN PARAPET WALL EXCEEDS 24" IN HEIGHT, REFER TO DETAIL MB/BUR 6, "HIGH PARAPET WALL"
2. MASONRY WALLS TO BE PRIMED PRIOR TO FLASHING. WOOD WALLS REQUIRE BASE SHEET NAILED TO WALL 9" O.C. ALONG TOP AND LAPS, ONE FASTENER EVERY SQUARE FOOT IN THE FIELD.
3. BASE FLASHING ON ALL 15 AND 20 YEAR GUARANTEE SYSTEMS MUST HAVE A BASE PLY. REFER TO FLASHING MEMBRANE APPLICATION AND FLASHING SPECIFICATION PLATES