

High Parapet Wall Detail MB/BUR 6

Diagram

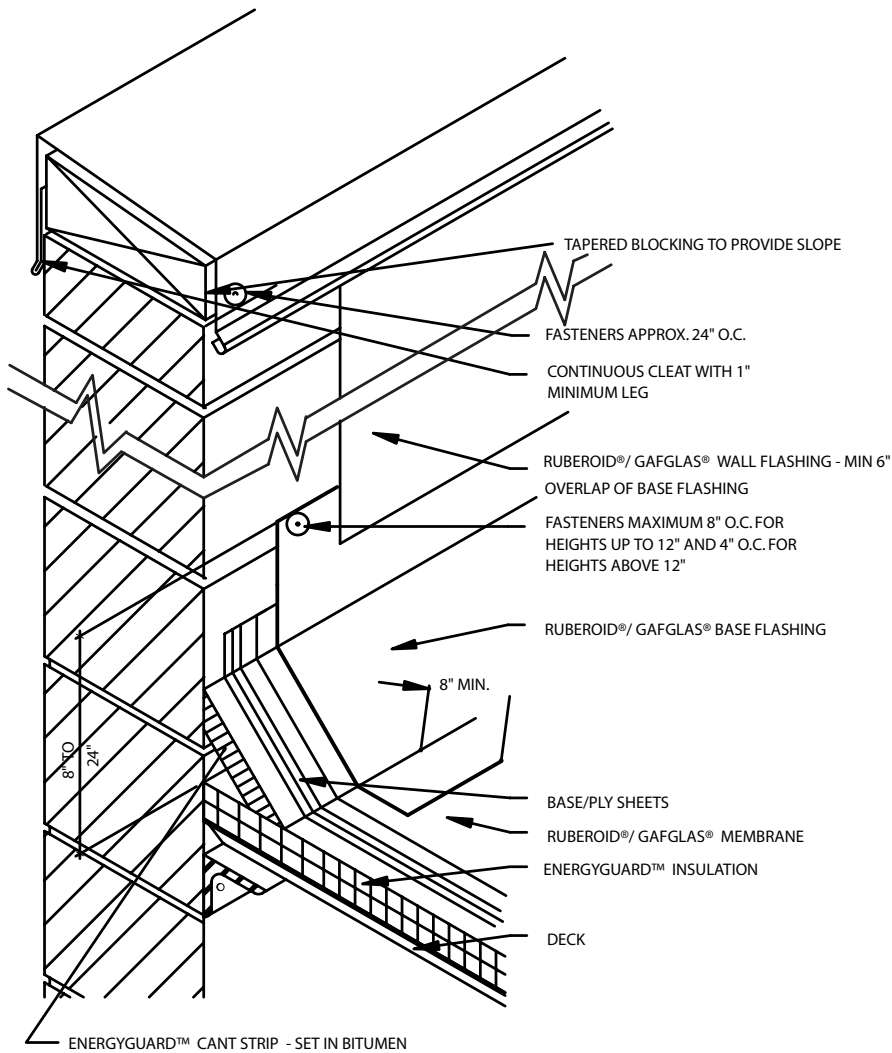


*Quality You Can Trust Since 1886...
From North America's Largest Roofing Manufacturer™*

MB 6/BUR 6 – HIGH PARAPET WALL DETAIL



Flashing Details



NOTES:

1. MASONRY WALLS TO BE PRIMED PRIOR TO FLASHING. WOOD WALLS REQUIRE BASE SHEET NAILED TO WALL 9" O.C. ALONG TOP AND LAPS, ONE FASTENER EVERY SQUARE FOOT IN THE FIELD.
2. REFER TO DETAIL MB / BUR 7 FOR ALTERNATE WALL FLASHING METHOD
3. FASTEN BASE FLASHING APPROXIMATELY 8" O.C. FOR HEIGHTS UP TO 12" AND 4" O.C. FOR HEIGHTS UP TO 24"
4. FOR WALL FLASHINGS IN EXCESS OF 4' CONTACT GAF TECHNICAL SERVICES AT 1-800-ROOF-411
5. BASE FLASHING ON ALL 15 AND 20 YEAR GUARANTEE SYSTEMS MUST HAVE A BASE PLY. REFER TO FLASHING MEMBRANE APPLICATION AND FLASHING SPECIFICATION PLATES