

Equipment or Sign Support Detail MB/BUR 32

Diagram

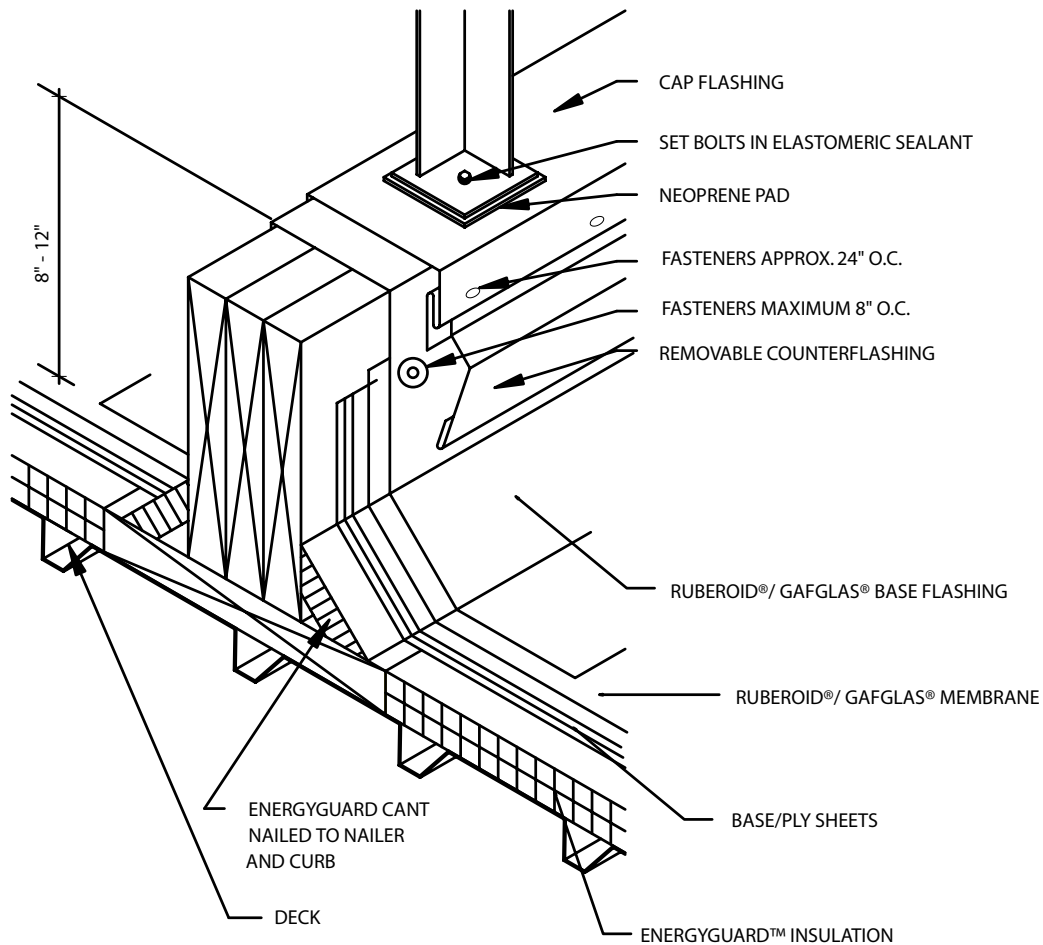


*Quality You Can Trust Since 1886...
From North America's Largest Roofing Manufacturer™*

MB 32/BUR 32 – EQUIPMENT OR SIGN SUPPORT DETAIL



Flashing Details



NOTE:

1. THIS DETAIL ALLOWS FOR ROOF MAINTENANCE AROUND THE EQUIPMENT SIGN. THE CONTINUOUS SUPPORT IS PREFERRED IN LIGHTWEIGHT ROOF SYSTEMS BECAUSE THE EQUIPMENT WEIGHT CAN BE SPREAD OVER TWO OR MORE SUPPORTING MEMBERS. CLEARANCE MUST BE PROVIDED FOR REMOVAL AND REPLACEMENT OF ROOFING AND FLASHING BETWEEN PARALLEL SUPPORTS.

Note: Base flashing on all 15 & 20 yr. guarantee systems must have a base ply. Refer to Flashing Membrane Application and Flashing Specification Plate Sections.