

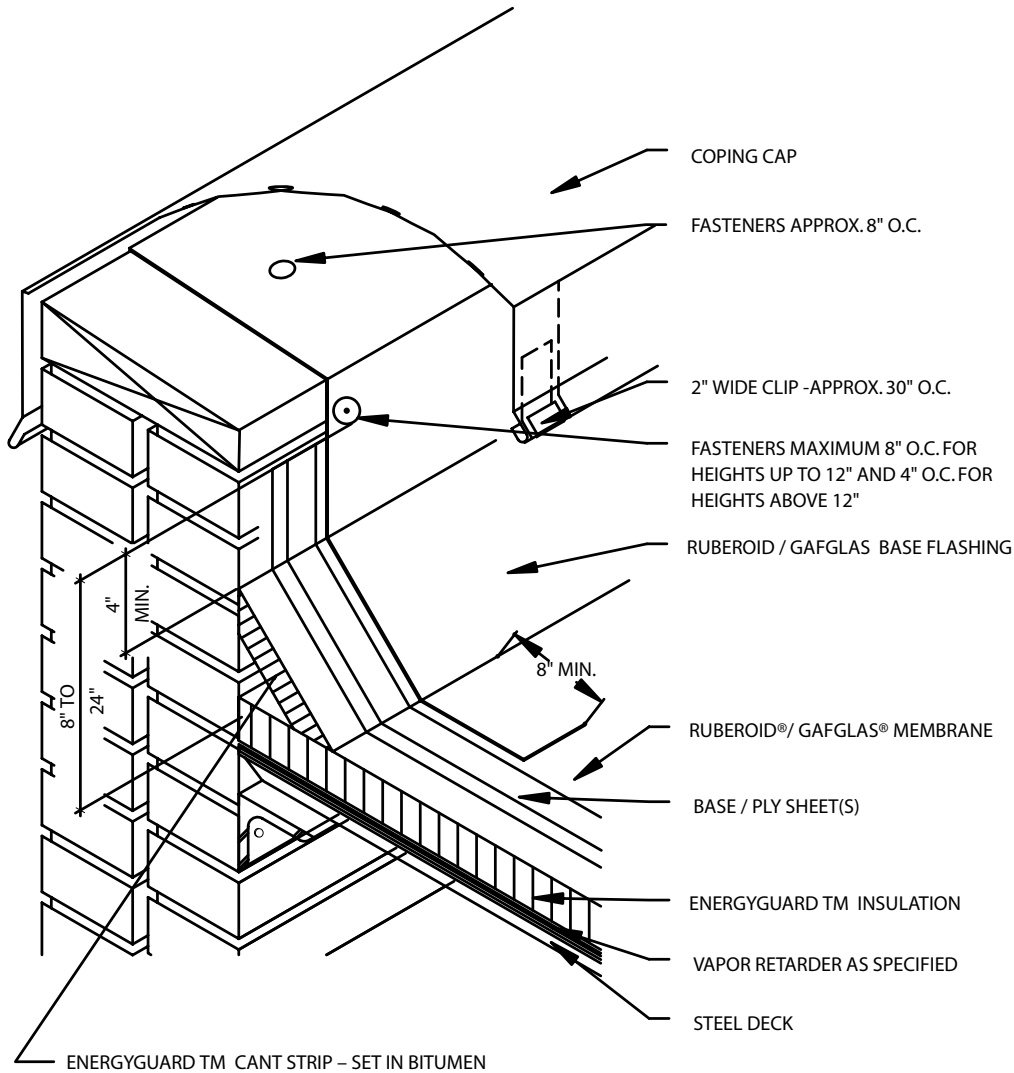
Wall Flashing Detail For Wall-Supported Deck MB/BUR 3

Diagram



*Quality You Can Trust Since 1886...
From North America's Largest Roofing Manufacturer™*

MB 3/BUR 3 – WALL FLASHING DETAIL FOR WALL SUPPORTED DECK



NOTES:

1. WHEN PARAPET WALL EXCEEDS 24" IN HEIGHT, REFER TO DETAIL MB/BUR 6, "HIGH PARAPET WALL"
2. MASONRY WALLS TO BE PRIMED PRIOR TO FLASHING. WOOD WALLS REQUIRE BASE SHEET NAILED TO WALL 9" O.C. ALONG TOP AND LAPS, ONE FASTENER EVERY SQUARE FOOT IN THE FIELD.
3. BASE FLASHINGS TURNED OVER EDGE A MINIMUM OF 1 1/2" (38mm) OR THICKNESS OF NAILER WHICHEVER IS GREATER
4. BASE FLASHING ON ALL 15 AND 20 YEAR GUARANTEE SYSTEMS MUST HAVE A BASE PLY. REFER TO FLASHING MEMBRANE APPLICATION AND FLASHING SPECIFICATION PLATES