

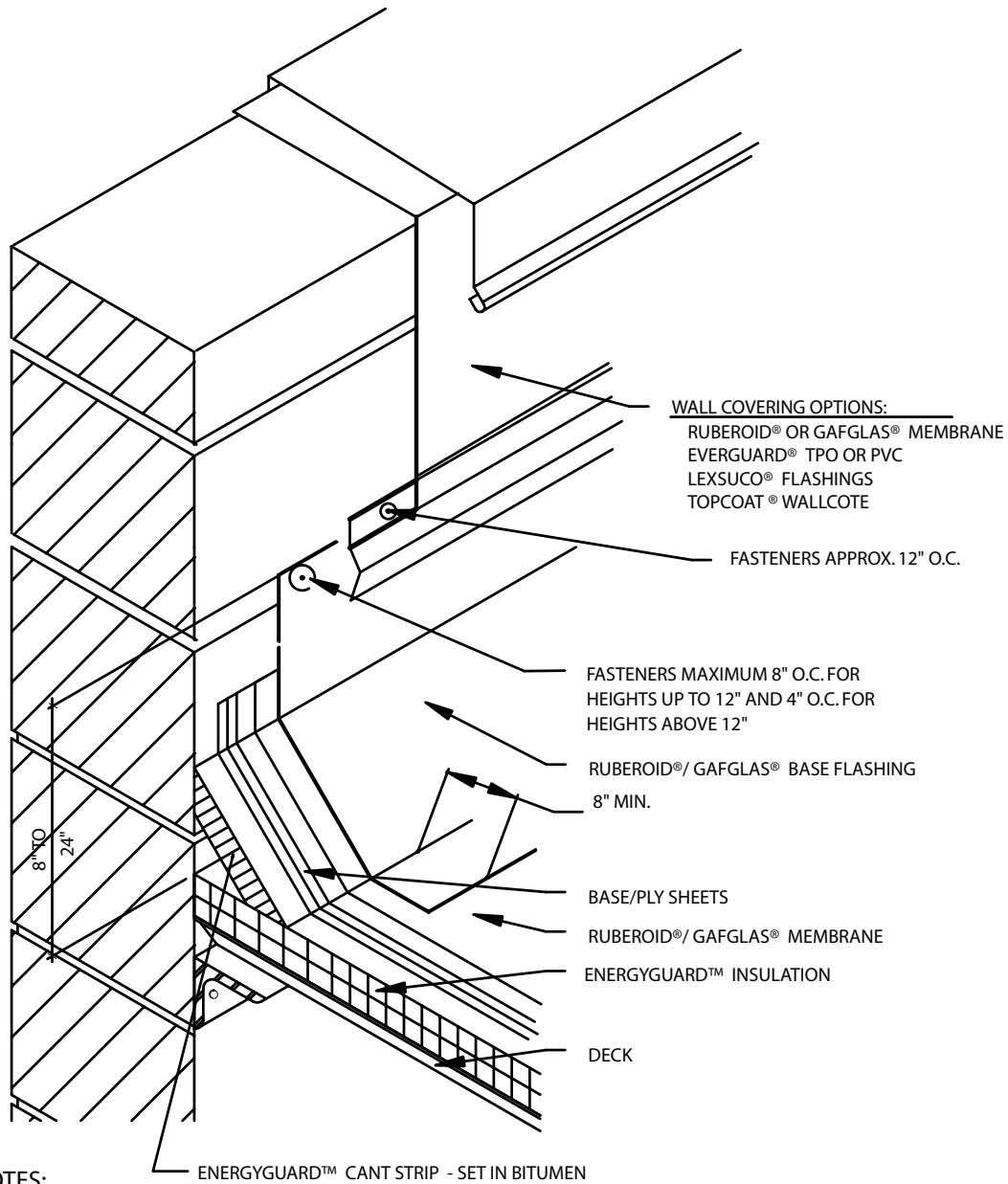
# Alternate High Parapet Wall Detail MB/BUR 7

Diagram



*Quality You Can Trust Since 1886...  
From North America's Largest Roofing Manufacturer™*

# MB 7/BUR 7 – ALTERNATE HIGH PARAPET WALL DETAIL



**NOTES:**

1. MASONRY WALLS TO BE PRIMED PRIOR TO FLASHING. WOOD WALLS REQUIRE BASE SHEET NAILED TO WALL 9" O.C. ALONG TOP AND LAPS, ONE FASTENER EVERY SQUARE FOOT IN THE FIELD.
2. WALL COVERINGS TURNED OVER EDGE A MINIMUM OF 1 1/2" (38mm) OR THICKNESS OF NAILER WHICHEVER IS GREATER.
3. REFER TO DETAIL MB / BUR 7 FOR ALTERNATE WALL FLASHING METHOD
4. FASTEN BASE FLASHING APPROXIMATELY 8" O.C. FOR HEIGHTS UP TO 12" AND 4" O.C. FOR HEIGHTS UP TO 24"
5. FOR WALL FLASHINGS IN EXCESS OF 4' CONTACT GAF TECHNICAL SERVICES AT 1-800-ROOF-411