

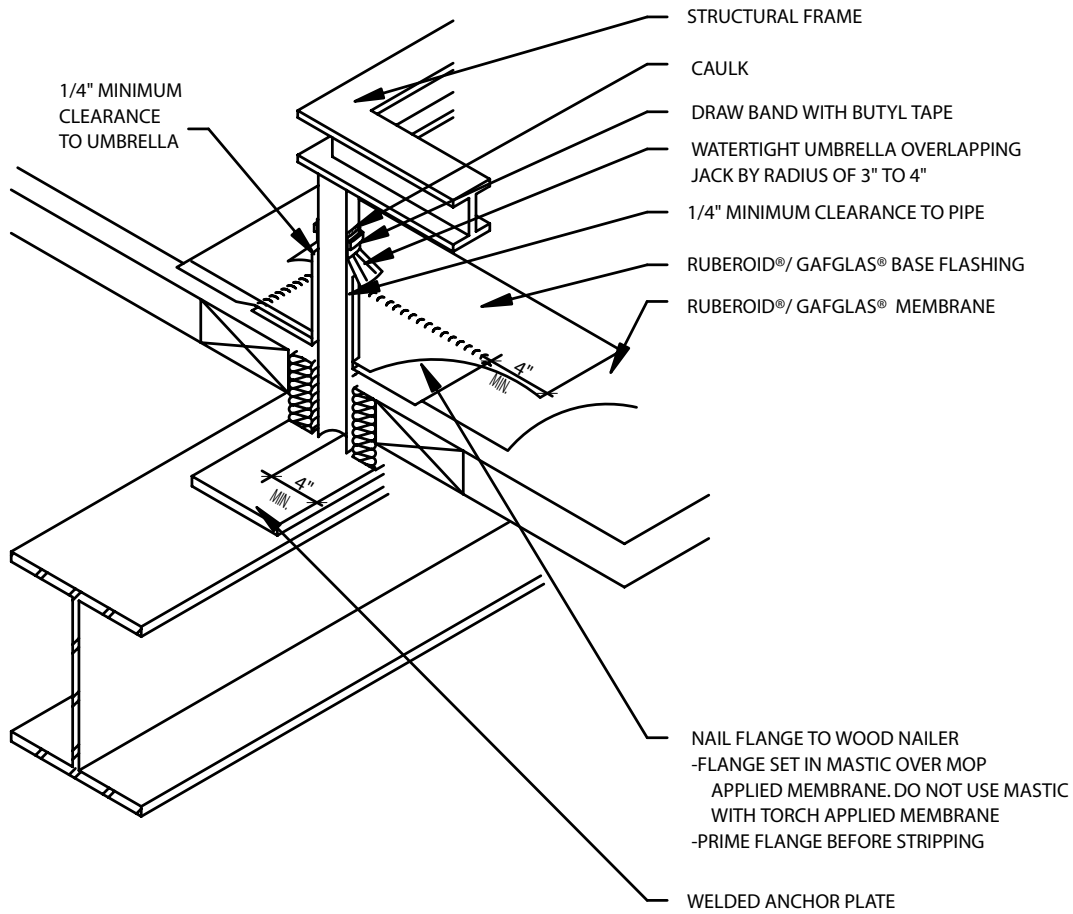
# Mechanical Equipment Stand Detail MB/BUR 33

Diagram



*Quality You Can Trust Since 1886...  
From North America's Largest Roofing Manufacturer™*

# MB 33/BUR 33 – MECHANICAL EQUIPMENT STAND DETAIL



## NOTE:

THIS DETAIL SHOULD BE USED WHEN A CONCENTRATED LOAD CAN BE LOCATED DIRECTLY OVER COLUMNS OR HEAVY GIRDERS IN THE STRUCTURE OF THE BUILDING. THIS DETAIL CAN BE ADAPTED FOR OTHER USES, SUCH AS SIGN SUPPORTS.